

Paris Junior College

Fact Book

Summer 2017



FACT BOOK

Summer 2017

Paris Junior College
2400 Clarksville Street
Paris, TX 75460
(903)785-7661

Phone: (903)782-0340 **Office of Institutional Research**
Fax: (903)782-0288 [E-mail: bmatthews@parisjc.edu](mailto:bmatthews@parisjc.edu)

**Paris Junior College does not discriminate on the basis of race, color, national origin,
gender, religion, age or disability in employment or the provision of services.**

Table of Contents

Message from the President	1
Mission	2
2015-2020 Strategic Goals	3
Student Data	
Enrollment by Campus (Unduplicated Within Campus)	5
Headcount by Ethnicity (ten year trend graph)	6
Headcount by Ethnicity (2016 percentage of total graph).....	6
Headcount by Gender	7
Headcount by Age and Enrollment Status	8
Headcount by Campus	9
Headcount by Geographical Designation	10
Headcount by Majors	11
Headcount by Intent in School	12
Headcount by Dual Credit, Online, Hybrid, and VCT Courses	13
Headcount by Semester	14
Contact Hours	15
Contact Hours by Semester	16
Contact Hours by Instructional Area-General Academic/Fall	17
Contact Hours by Instructional Area-General Academic/Spring	18
Contact Hours by Instructional Area-General Academic/Summer I	19
Contact Hours by Instructional Area-General Academic/Summer II	20

Table of Contents, continued

Student Data, continued

Contact Hours by Instructional Area-Technical/Fall	21
Contact Hours by Instructional Area-Technical/Spring	22
Contact Hours by Instructional Area-Technical/Summer I	23
Contact Hours by Instructional Area-Technical/Summer II	24
Contact Hours by Instructional Area-Continuing Education/Quarter 1	25
Contact Hours by Instructional Area-Continuing Education/Quarter 2	26
Contact Hours by Instructional Area-Continuing Education/Quarter 3	27
Contact Hours by Instructional Area-Continuing Education/Quarter 4	28
Credit Hours by Semester	29
Full-time Equivalent Enrollment by Semester.....	30
Special Populations Headcount.....	31
Remedial First-Time Students	32
Service Area Graduates Enrolled in Higher Education	33
PJC Transfers to Universities	38
PJC Transfers to Community Colleges	42
Graduates and Core Completers	46

Table of Contents, continued

Employee Data

Faculty by Ethnicity	48
Faculty by Highest Degree Earned	49
Faculty by Gender	50
Administrative, Professional, and Support Staff by Ethnicity	51

Financial Data

Revenue by Source	53
Operating Expenditures by Functional Category	54
Tuition and Fees Revenue	55
Per Hour Tuition Costs	56
Property Tax Collections	57
Property Tax Rates Assessed	58
Net Assessed Valuation	59

Glossary of Terms	60
--------------------------------	----

Message from the President

Paris Junior College is a growing and thriving institution. After 93 years of offering a quality education, PJC remains dedicated to providing opportunity to those who seek it.

This Fact Book presents data that reflects the dynamic aspects of the institution along with the unique characteristics which make PJC what it is today. The data will show the dramatic growth experienced over the past several years and how the college has remained a viable institution of higher learning.

This Fact Book will provide quantitative data to describe PJC. As it has been for the past 93 years, the story behind the data and the success PJC has achieved is rooted in the faculty and staff that are dedicated to furthering the mission of this great institution.

Pamela D. Anglin, Ed.D.
President
Paris Junior College



Mission

Paris Junior College is a comprehensive community college serving the region's educational and training needs while strengthening the economic, social and cultural life of our diverse community.

TEXAS EDUCATION CODE 130.003

The purpose of each public community college shall be to provide:

1. Technical programs up to two years in length leading to associate degrees or certificates;
2. Vocational programs leading directly to employment in semi-skilled and skilled occupations;
3. Freshman and sophomore courses in arts and sciences;
4. Continuing adult education programs for occupational or cultural upgrading;
5. Compensatory education programs designed to fulfill the commitment of an admissions policy allowing the enrollment of disadvantaged students;
6. A continuing program of counseling and guidance designed to assist students in achieving their individual educational goals;
7. Workforce development programs designed to meet local and statewide needs;
8. Adult literacy and other basic skills programs for adults;
9. Such other purposes as may be prescribed by the Texas Higher Education Coordinating Board or local governing boards in the best interest of post-secondary education in Texas.

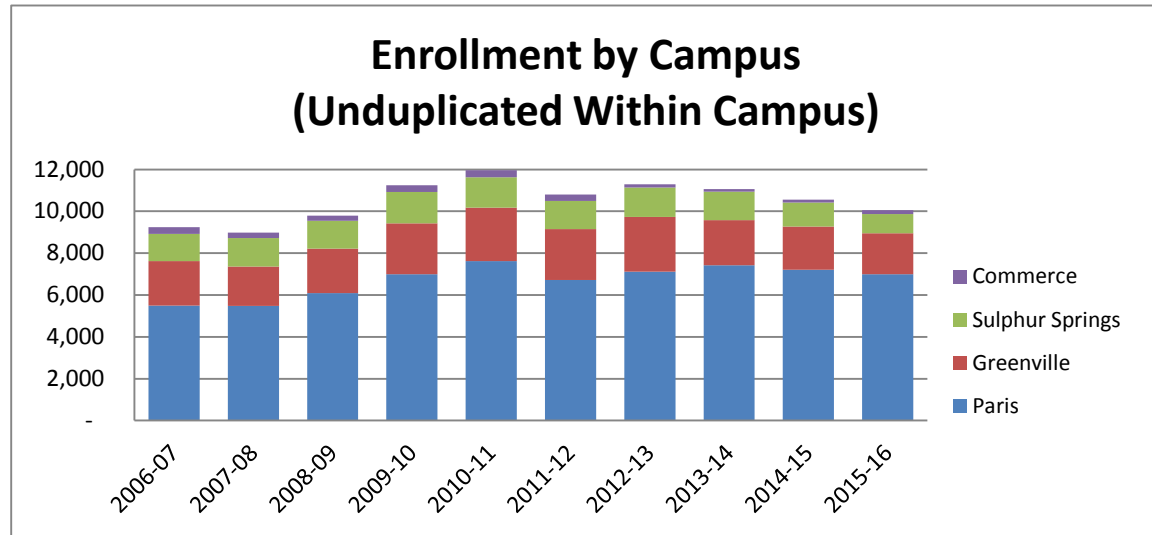
2015-2020 Strategic Goals

1. Maintain a level of high quality instruction.
2. Increase workforce training in program offerings and in number of students.
3. Increase the tax base to secure the institution's future.
4. Continue to focus on and strengthen student retention and success agenda.
5. Obtain and make available current technology for administrative and student use.

Student Data

Enrollment by Campus (Unduplicated Within Campus)

Year	Campus				Total
	Paris	Greenville	Sulphur Springs	Commerce	
2006-07	5,498	2,123	1,294	327	9,242
2007-08	5,480	1,879	1,364	263	8,986
2008-09	6,096	2,123	1,331	247	9,797
2009-10	6,989	2,430	1,512	321	11,252
2010-11	7,629	2,552	1,443	347	11,971
2011-12	6,713	2,442	1,342	307	10,804
2012-13	7,117	2,616	1,404	147	11,284
2013-14	7,418	2,161	1,364	116	11,059
2014-15	7,206	2,071	1,148	137	10,562
2015-16	6,990	1,961	924	185	10,060

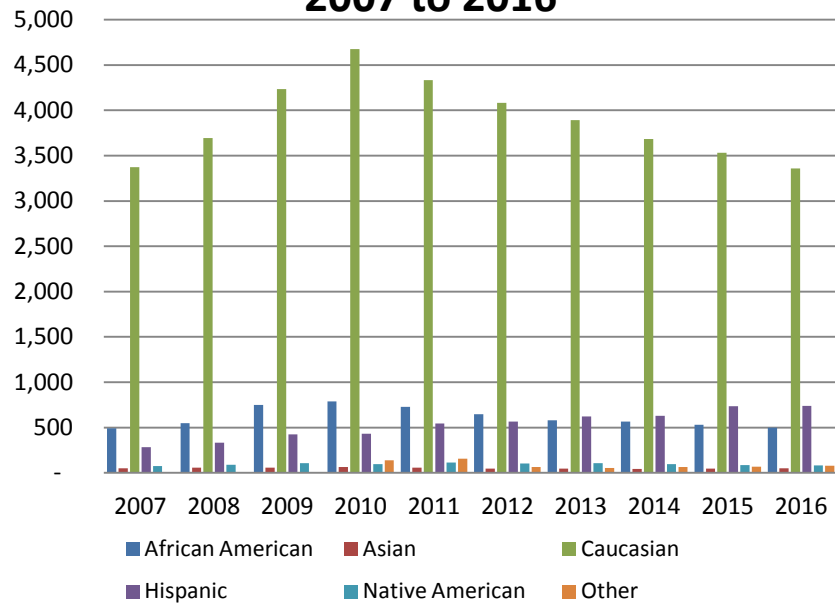


Includes Credit and Non-Credit Enrollment

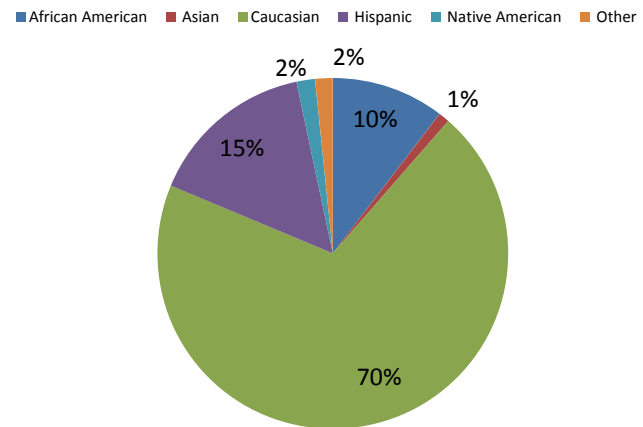
Headcount by Ethnicity Fall Semesters Only

Ethnicity	2007	2008	2009	2010	2011	2012	2013	2014	2015	2016
African American	493	550	750	789	730	649	579	566	532	500
Asian	52	58	59	66	57	48	46	44	48	49
Caucasian	3,373	3,695	4,233	4,674	4,334	4,081	3,892	3,683	3,532	3,359
Hispanic	282	332	424	431	545	567	623	631	734	738
Native American	77	91	108	98	114	104	107	97	85	82
Other	9	7	6	139	156	64	54	65	68	78
Total	4,286	4,733	5,580	6,197	5,936	5,513	5,301	5,086	4,999	4,806

Growth by Ethnicity Fall 2007 to 2016



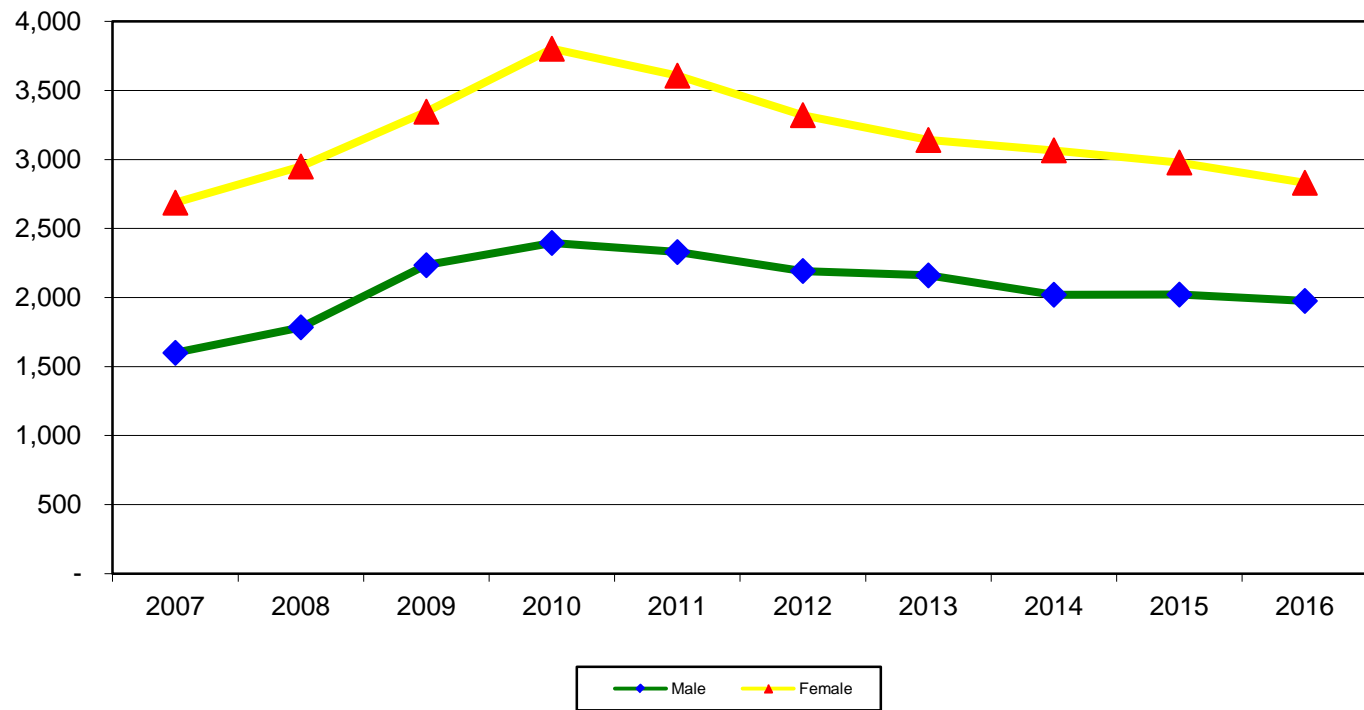
Student Ethnicity Fall 2016



Headcount by Gender Fall Semesters Only

Gender	2007	2008	2009	2010	2011	2012	2013	2014	2015	2016
Male	1,599	1,784	2,234	2,395	2,329	2,192	2,160	2,020	2,021	1,975
Female	2,687	2,949	3,346	3,802	3,607	3,321	3,141	3,066	2,978	2,831
Total	4,286	4,733	5,580	6,197	5,936	5,513	5,301	5,086	4,999	4,806

Gender	2007	2008	2009	2010	2011	2012	2013	2014	2015	2016
Male	37%	38%	40%	39%	39%	40%	41%	40%	40%	41%
Female	63%	62%	60%	61%	61%	60%	59%	60%	60%	59%



**Headcount by Age
Fall Semesters Only**

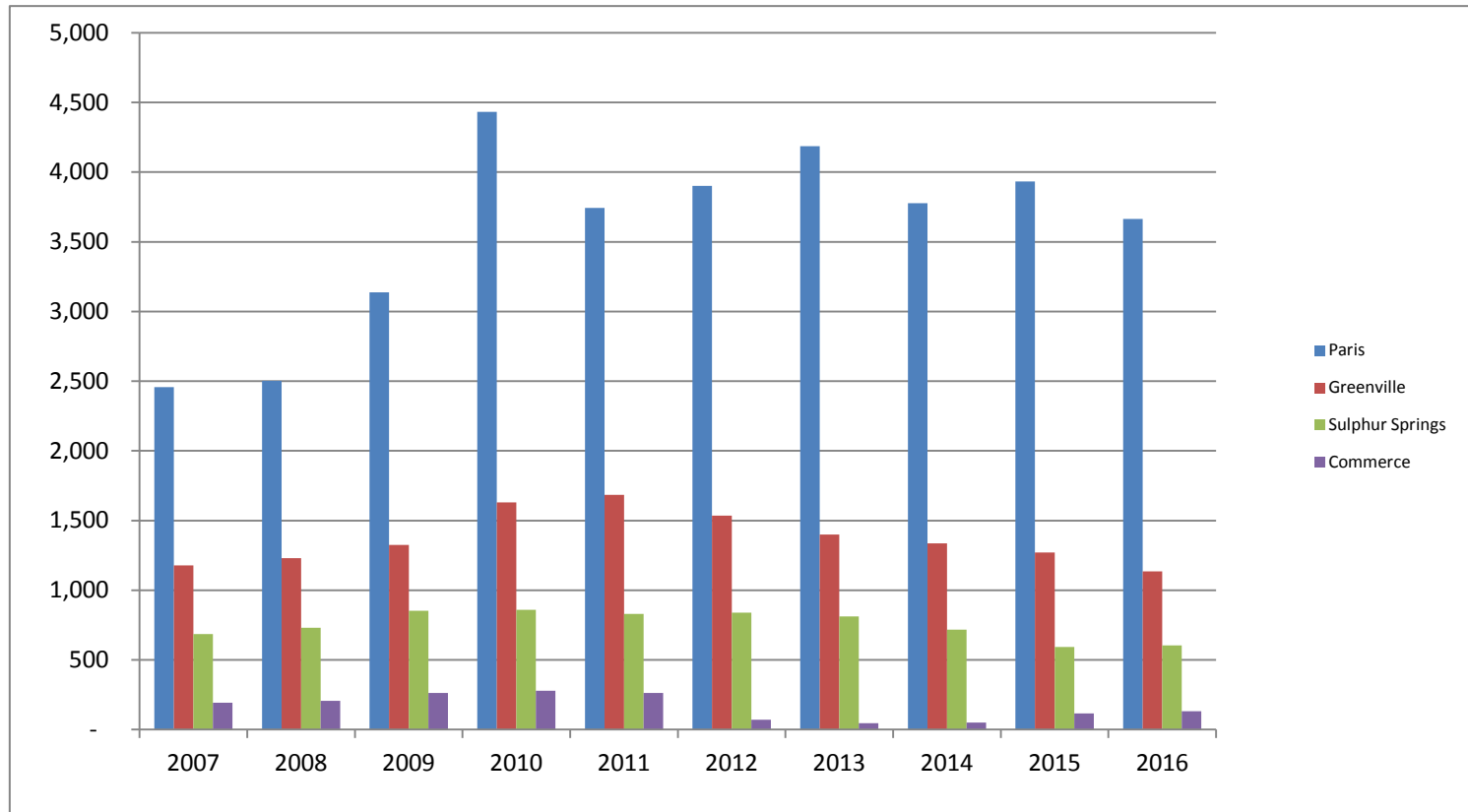
Age	2007	2008	2009	2010	2011	2012	2013	2014	2015	2016
Under 17	273	358	441	534	444	516	559	559	681	720
17	556	724	727	786	744	772	742	720	745	828
18	680	704	811	799	797	689	777	700	800	686
19-21	1,221	1,169	1,346	1,403	1,397	1,274	1,193	1,265	1,178	1,193
22-24	392	462	528	657	608	548	530	512	443	395
25-30	399	494	622	734	727	676	589	523	466	429
31-35	246	257	335	378	392	347	295	268	244	212
36-50	451	474	642	752	663	542	473	407	332	271
51-64	60	84	118	138	148	138	134	125	103	70
65 and over	8	7	10	16	16	11	9	7	7	2
Total	4,286	4,733	5,580	6,197	5,936	5,513	5,301	5,086	4,999	4,806
Average	23.9	24.0	24.0	24.0	24.1	24.0	24.0	23.5	22.3	21.7

**Enrollment Status
Fall Semesters Only**

	2007	2008	2009	2010	2011	2012	2013	2014	2015	2016
Full-Time	1,866	1,903	2,649	2,971	2,890	2,567	2,470	2,229	2,057	1,831
Part-Time	2,420	2,830	2,931	3,226	3,046	2,946	2,831	2,857	2,942	2,975
Full-Time %	44%	40%	47%	48%	49%	47%	47%	44%	41%	38%
Part-Time %	56%	60%	53%	52%	51%	53%	53%	56%	59%	62%
Total	4,286	4,733	5,580	6,197	5,936	5,513	5,301	5,086	4,999	4,806

Unduplicated Headcount by Campus Fall Semesters Only

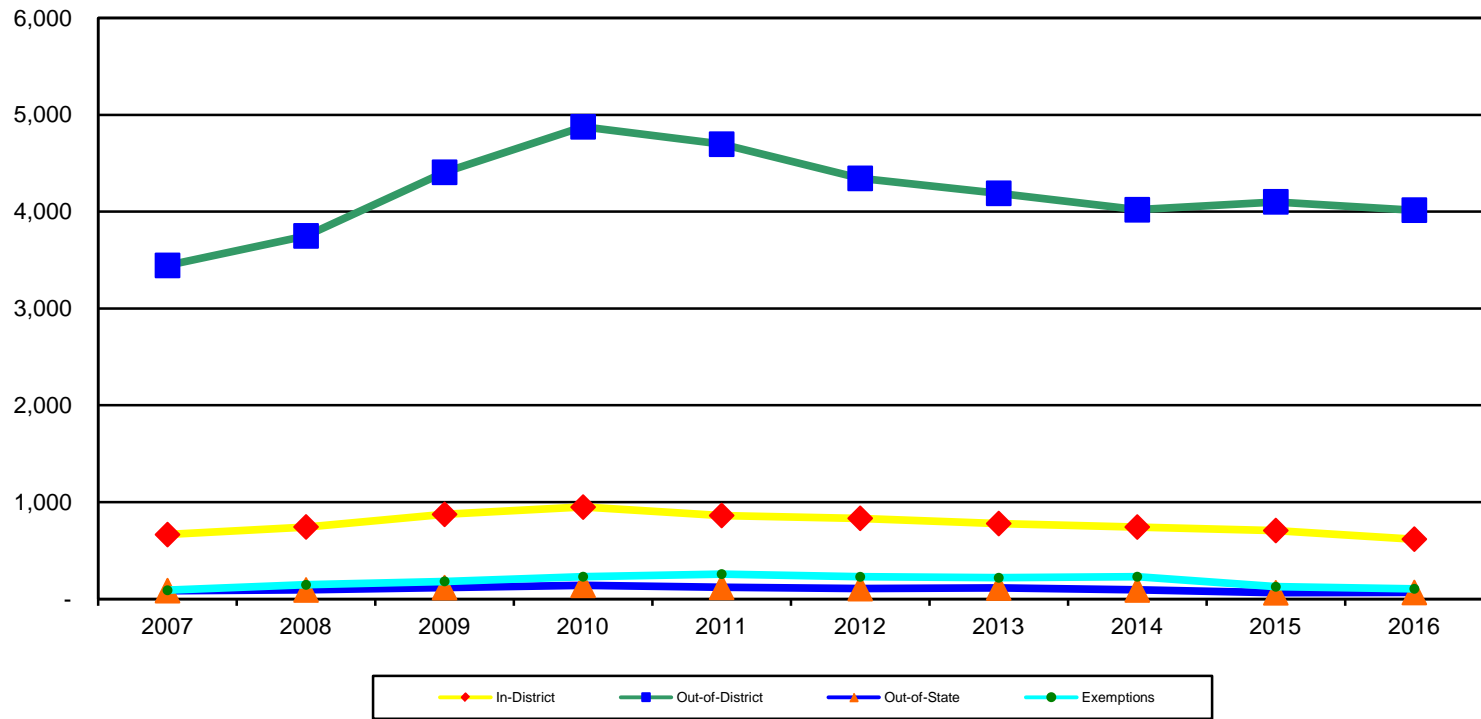
Campus	2007	2008	2009	2010	2011	2012	2013	2014	2015	2016
Paris	2,458	2,502	3,138	4,433	3,744	3,901	4,186	3,778	3,933	3,664
Greenville	1,177	1,229	1,326	1,630	1,685	1,536	1,399	1,337	1,270	1,135
Sulphur Springs	685	730	853	859	831	838	811	717	593	603
Commerce	192	206	263	279	263	70	45	51	116	132



Includes Credit Only Enrollment, and Commerce represents Math Developmental Coursework
Unduplicative within each Campus since students may attend multiple campuses

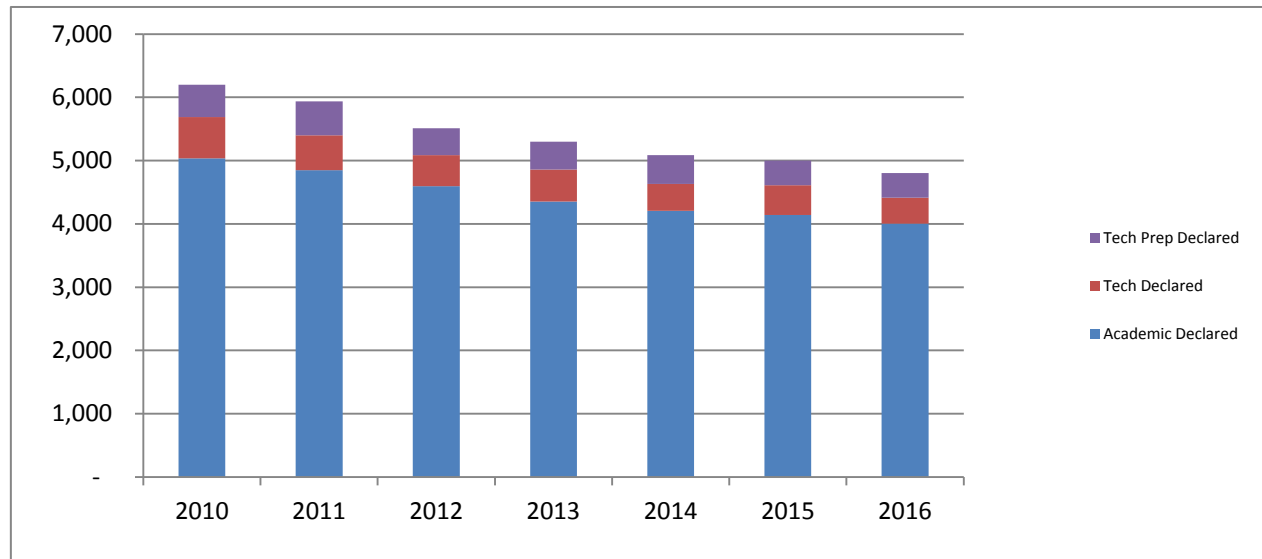
Headcount by Geographical Designation Fall Semesters Only

	2007	2008	2009	2010	2011	2012	2013	2014	2015	2016
In-District	665	744	874	949	862	833	779	743	707	618
Out-of-District	3,445	3,750	4,407	4,877	4,697	4,344	4,190	4,020	4,102	4,016
Out-of-State	86	93	117	141	120	107	113	93	64	67
Exemptions	90	146	182	230	257	229	219	230	126	105
Total	4,286	4,733	5,580	6,197	5,936	5,513	5,301	5,086	4,999	4,806



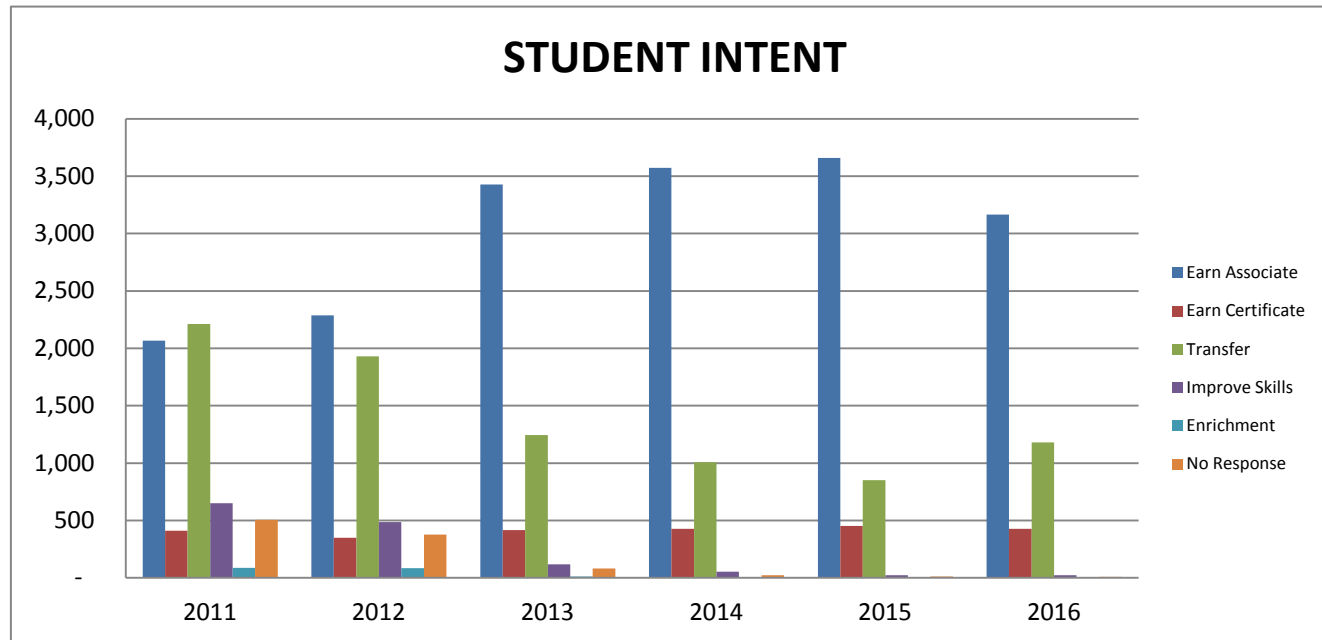
Headcount by Majors Fall Semesters Only

Major	2010	2011	2012	2013	2014	2015	2016
Academic Declared	5,035	4,848	4,597	4,354	4,209	4,141	4,006
Tech Declared	652	553	490	505	424	471	410
Tech Prep Declared	510	535	426	442	453	387	390
Total	6,197	5,936	5,513	5,301	5,086	4,999	4,806



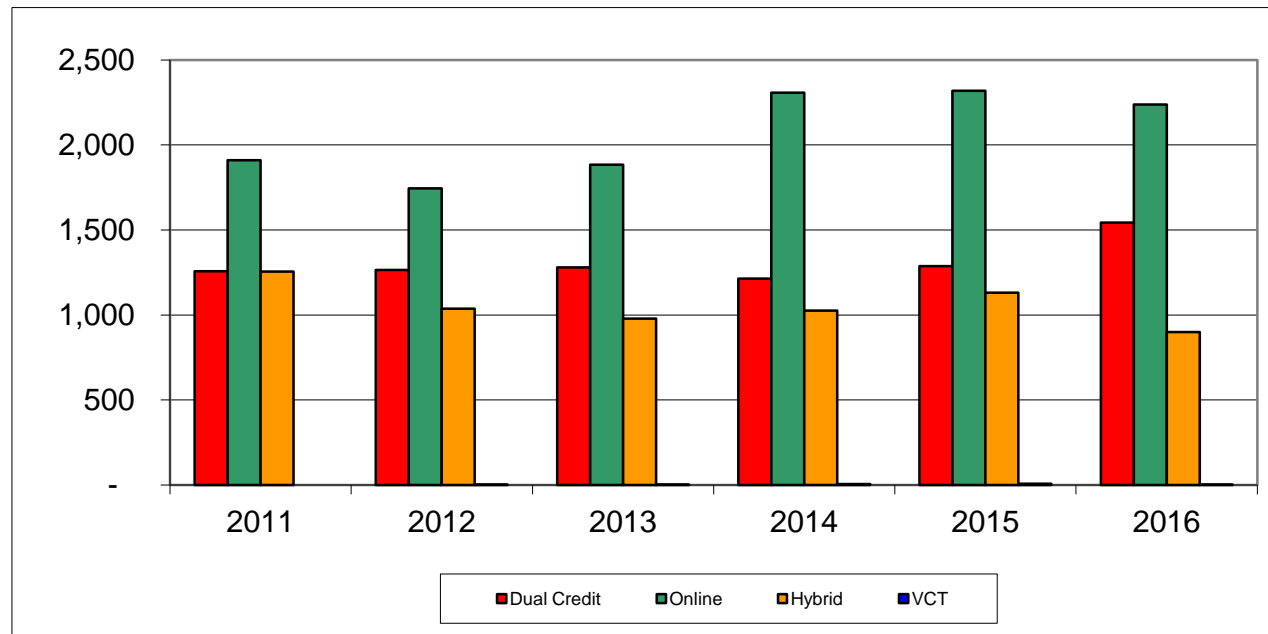
Headcount by Intent In School Fall Semesters Only

Intent	2011	2012	2013	2014	2015	2016
Earn Associate	2,068	2,286	3,428	3,572	3,658	3,164
Earn Certificate	411	350	417	427	451	428
Transfer	2,213	1,929	1,243	1,008	851	1,181
Improve Skills	651	485	118	53	24	22
Enrichment	88	85	13	4	2	2
No Response	505	378	82	22	13	9
Total	5,936	5,513	5,301	5,086	4,999	4,806



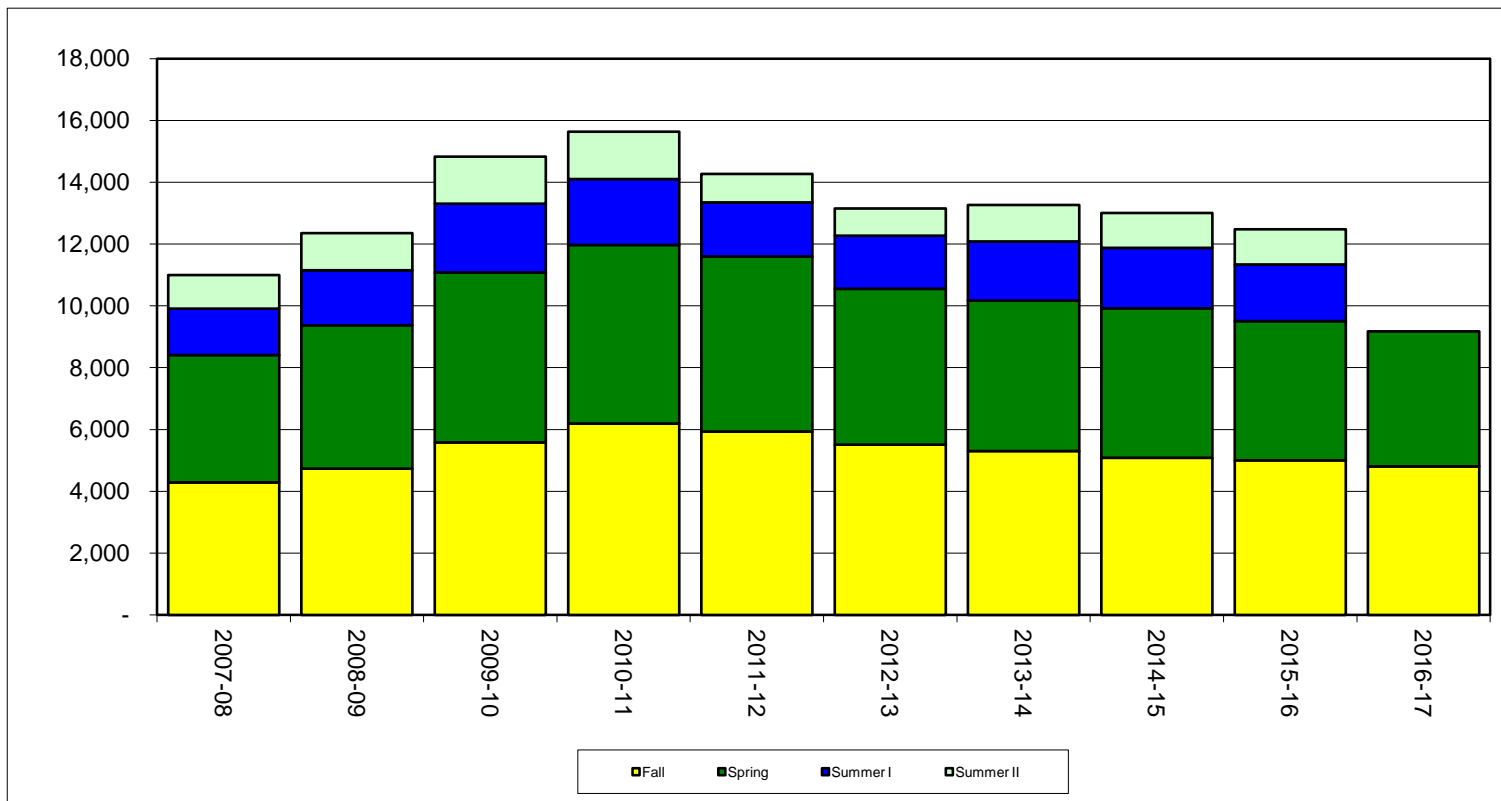
HEADCOUNT FOR DUAL CREDIT, ONLINE, HYBRID, AND VCT COURSES Fall Semesters Only

Enrollment	2011	2012	2013	2014	2015	2016
Dual Credit	1,257	1,265	1,279	1,213	1,287	1,544
Online	1,910	1,745	1,884	2,307	2,319	2,237
Hybrid	1,255	1,037	978	1,026	1,132	899
VCT	-	2	2	5	7	1
Total	4,422	4,049	4,143	4,551	4,745	4,681



Headcount by Semester

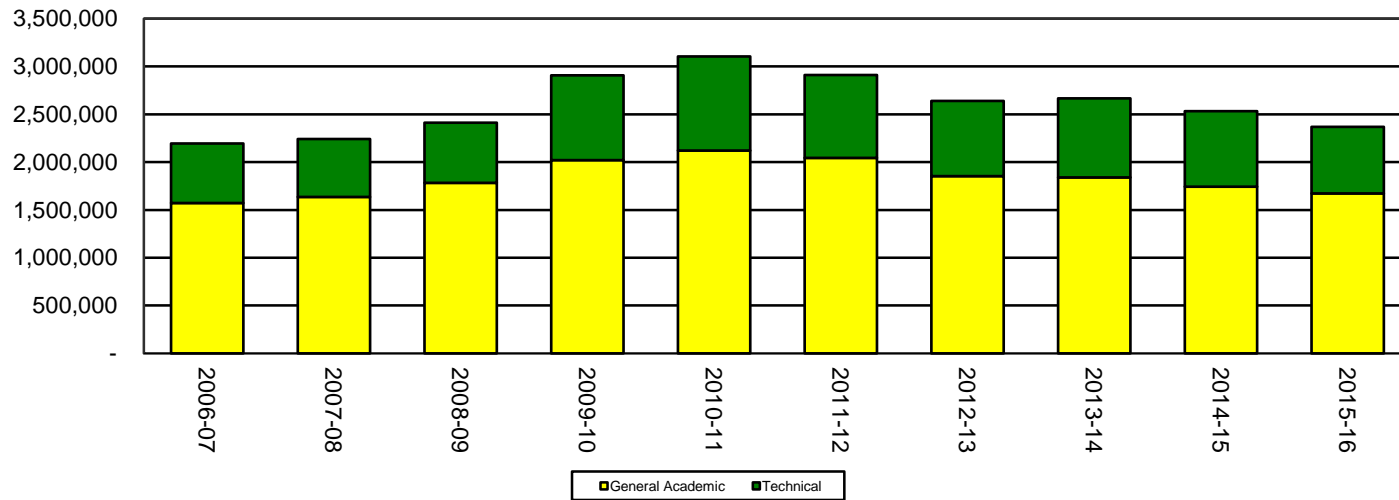
Semester	2007-08	2008-09	2009-10	2010-11	2011-12	2012-13	2013-14	2014-15	2015-16	2016-17
Fall	4,286	4,733	5,580	6,197	5,936	5,513	5,301	5,086	4,999	4,806
Spring	4,127	4,636	5,499	5,778	5,656	5,042	4,867	4,836	4,505	4,365
Summer I	1,493	1,782	2,227	2,131	1,750	1,720	1,916	1,950	1,830	n/a
Summer II	1,089	1,199	1,520	1,525	924	871	1,182	1,131	1,147	n/a
Total	10,995	12,350	14,826	15,631	14,266	13,146	13,266	13,003	12,481	9,171



Contact Hours

Fiscal Year	General Academic	Technical	CBM00S Total
2006-07	1,571,376	624,294	2,195,670
2007-08	1,637,184	605,767	2,242,951
2008-09	1,784,192	629,081	2,413,273
2009-10	2,020,512	888,604	2,909,116
2010-11	2,121,168	984,662	3,105,830
2011-12	2,043,536	868,525	2,912,061
2012-13	1,854,672	785,058	2,639,730
2013-14	1,840,068	826,656	2,666,724
2014-15	1,743,916	788,447	2,532,363
2015-16	1,672,256	697,821	2,370,077

Contact Hours

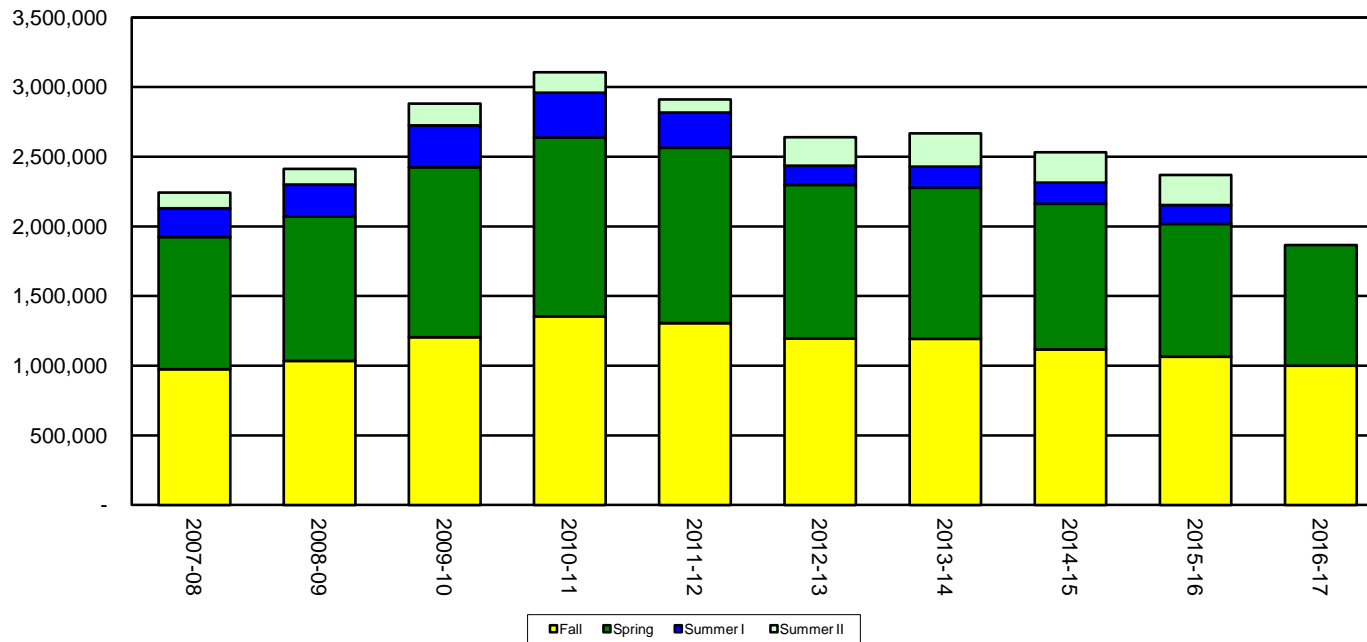


Contact Hours by Semester General Academic and Technical

Semester	2007-08	2008-09	2009-10	2010-11	2011-12	2012-13	2013-14	2014-15	2015-16	2016-17
Fall	975,168	1,035,392	1,204,720	1,353,664	1,305,936	1,195,808	1,192,096	1,116,256	1,065,412	999,960
Spring	949,157	1,034,349	1,219,230	1,285,022	1,259,135	1,102,794	1,085,930	1,045,243	953,203	865,964
Summer I	205,296	229,920	300,050	321,552	252,032	138,112	149,964	152,368	133,444	n/a
Summer II	113,330	113,612	156,430	145,592	94,958	203,016	238,734	218,496	218,018	n/a
Total	2,242,951	2,413,273	2,880,430	3,105,830	2,912,061	2,639,730	2,666,724	2,532,363	2,370,077	1,865,924

using CBM00S starting 2012-13

Contact Hours by Semester



**Contact Hours by Instructional Area - General Academic
Fall Semesters Only**

Instructional Area:	2012	2013	2014	2015	2016
Agriculture	-	576	-	-	-
Biological Sciences	149,728	150,656	119,856	125,184	115,856
Accounting (transfer)	4,928	7,296	9,216	8,192	7,808
Communications	7,744	7,344	9,264	8,256	9,072
Computer and Information Sciences	41,664	38,400	39,552	39,360	37,248
Kinesiology	45,456	43,680	38,368	28,128	12,288
Teacher Education	4,114	3,152	5,696	6,016	6,656
Art	16,560	11,616	14,880	10,848	10,560
Drama	18,880	21,792	20,368	20,016	19,872
Music	15,584	15,504	14,432	12,096	11,776
Foreign Language	23,328	23,840	25,040	22,032	14,816
English	103,088	99,328	99,872	101,792	91,744
Speech	22,848	26,112	24,672	22,944	21,888
Learning Skills Reading	17,088	13,968	-	4,160	3,456
Developmental Writing	33,792	27,312	-	1,728	2,688
NCB Integrated	-	-	560	1,424	1,584
Integrated Reading/Writing	-	576	14,720	10,752	8,000
Math	54,864	52,368	56,688	54,528	48,768
Learning Skills Math	23,104	20,608	-	-	-
NCB Math			288	464	320
Developmental Math	56,016	41,328	45,632	41,360	43,456
Chemistry	5,312	14,928	12,992	16,912	13,680
Physics	19,072	25,680	25,600	21,008	23,376
Geology	6,720	6,912	14,448	11,328	6,048
Learning Frameworks	17,888	18,144	15,312	35,088	23,664
Psychology	37,152	33,168	32,112	27,360	26,640
Economics	14,112	12,240	11,328	11,136	13,536
History	63,552	64,272	62,496	62,832	60,048
Government	45,024	45,792	44,352	43,632	48,240
Sociology	14,832	14,064	14,592	9,648	9,936
Humanities	-	-	-	192	-

Contact Hours by Instructional Area - General Academic Spring Semesters Only

Instructional Area:	2013	2014	2015	2016	2017
Agriculture	-	336	288	-	-
Biological Sciences	142,240	138,336	113,616	115,680	104,928
Accounting (transfer)	4,864	6,464	7,616	8,384	8,640
Communications	7,280	9,712	11,296	10,416	13,392
Computer and Information Sciences	37,632	37,824	40,992	39,264	33,792
Kinesiology	44,016	39,712	38,400	21,648	15,456
Teacher Education	3,984	5,120	5,952	5,440	6,080
Art	12,192	14,736	14,304	11,424	8,976
Drama	19,344	15,456	21,040	22,224	22,912
Music	15,024	13,040	11,312	11,040	9,328
Foreign Language	22,208	25,728	27,200	20,240	11,008
English	96,512	94,448	92,464	94,272	85,280
Speech	24,096	18,864	19,680	15,216	17,280
Learning Skills Reading	10,512	-	-	1,152	1,408
Developmental Writing	20,160	-	-	896	640
NCB Integrated		288	784	752	640
Integrated Reading/Writing	-	14,080	7,488	5,248	4,480
Math	45,360	47,760	48,384	46,752	46,416
Learning Skills Math	16,512	1,152	-	-	-
NCB Math		56	256	112	224
Developmental Math	46,784	38,032	25,792	21,280	25,184
Chemistry	1,888	13,232	12,992	12,736	12,560
Physics	19,632	31,360	22,176	17,376	21,280
Geology	7,008	5,376	15,168	7,776	8,544
Engineering	240	-	-	-	-
Learning Frameworks	8,192	6,448	6,352	10,176	9,168
Psychology	31,584	29,520	25,680	25,248	23,472
Economics	13,872	14,592	17,040	19,440	25,536
History	64,848	64,272	62,304	64,992	57,648
Government	40,416	42,912	41,568	36,144	34,320
Sociology	14,400	14,448	13,296	9,264	11,184
Humanities	-	-	-	144	-

Contact Hours by Instructional Area - General Academic Summer I Semesters Only

Instructional Area:	2012	2013	2014	2015	2016
Agriculture	-	-	-	-	-
Biological Sciences	26,672	27,312	27,632	31,168	36,768
Accounting (transfer)	-	-	320	896	1,216
Communications	1,824	1,488	1,776	960	1,248
Computer and Information Sciences	7,296	7,392	6,816	4,032	3,264
Kinesiology	9,680	10,608	8,256	8,640	1,664
Teacher Education	-	-	-	-	-
Art	2,160	1,488	2,688	3,120	3,312
Drama	4,032	5,280	2,784	4,224	4,128
Music	2,256	528	2,016	1,536	960
Foreign Language	3,520	5,760	4,432	4,592	3,920
English	10,624	9,776	10,272	11,760	12,112
Speech	3,840	5,568	6,624	7,392	4,080
Learning Skills Reading	2,688	1,440	-	-	512
Developmental Writing	4,224	2,112	-	-	-
NCB Integrated	-	-	64	96	32
Integrated Reading/Writing	-	-	2,496	1,664	768
Math	8,544	6,720	8,496	6,960	6,960
Learning Skills Math	3,904	3,264	-	-	-
NCB Math	-	-	16	-	32
Developmental Math	9,216	7,296	4,608	5,776	3,840
Chemistry	1,792	1,792	5,264	4,032	3,104
Physics	784	2,208	8,128	6,320	7,344
Geology	2,112	1,440	1,440	3,552	1,152
Learning Frameworks	1,440	1,504	1,984	1,968	3,504
Psychology	4,656	4,608	6,528	6,672	3,936
Economics	3,072	3,072	3,936	3,792	3,168
History	6,384	6,720	8,736	6,288	5,472
Government	9,120	8,736	12,816	14,592	10,992
Sociology	2,064	1,536	1,680	1,344	1,152
Humanities	-	-	-	-	-

**Contact Hours by Instructional Area - General Academic
Summer II Semesters Only**

Instructional Area:	2012	2013	2014	2015	2016
Agriculture	-	-	-	-	-
Biological Sciences	20,112	21,136	27,968	23,856	27,696
Accounting (transfer)	-	-	128	-	-
Communications	1,152	1,152	1,008	1,344	1,296
Computer and Information Sciences	3,456	960	5,472	9,792	9,024
Kinesiology	3,552	5,184	4,320	6,672	912
Education	-	-	-	-	-
Art	480	1,008	576	672	720
Drama	1,728	-	1,056	3,168	3,936
Music	1,056	-	1,488	-	336
Foreign Language	2,608	2,704	4,096	3,808	3,696
English	5,824	5,520	8,432	7,264	9,248
Speech	3,552	2,592	4,608	3,216	2,736
Learning Skills Reading	240	-	-	-	-
NCB Integrated	-	-	16	64	64
Integrated Reading/Writing	-	-	448	1,280	896
Developmental Writing	-	768	-	-	-
Math	5,376	4,368	6,000	4,848	5,568
Learning Skills Math	384	384	-	-	-
NCB Math	-	-	16	64	16
Developmental Math	2,880	3,584	2,240	1,488	1,888
Chemistry	-	112	1,120	560	-
Physics	224	576	3,872	3,968	6,224
Geology	864	384	768	1,152	1,056
Learning Frameworks	-	-	320	544	1,152
Psychology	3,744	4,128	5,664	3,264	5,040
Economics	1,680	2,208	2,640	3,120	3,024
History	4,176	4,080	6,960	5,520	5,616
Government	4,608	5,520	7,584	7,824	6,048
Sociology	960	1,296	1,488	1,248	1,200
Humanities	-	-	-	-	-

**Contact Hours by Instructional Area - Technical
Fall Semesters Only**

Instructional Area:	2012	2013	2014	2015	2016
Sec. General Business	31,888	26,752	22,432	21,136	13,760
CIS	21,456	19,344	26,048	16,864	14,304
Welding	29,536	50,016	35,232	42,128	42,144
Air Conditioning	62,112	52,976	44,416	28,472	18,988
Vocational Nursing	30,240	25,488	28,944	25,056	22,896
A.D. Nursing	16,464	20,160	22,176	15,792	12,752
Other Health	13,056	13,536	15,408	11,472	14,160
Surg Tech	3,600	6,000	2,800	3,600	3,600
Radiology	15,504	14,608	14,688	13,888	13,040
Nurse Aide	-	3,904	3,472	5,792	3,568
Drafting	7,232	10,368	10,592	10,848	10,368
Electrician	-	1,152	1,216	7,456	4,704
Electronics/Electro Mechanical	15,808	14,608	20,704	15,424	15,088
Plumbing	-	-	1,536	-	-
Horology	5,616	6,480	9,504	7,488	9,216
Jewelry	29,760	31,872	34,768	28,800	21,744
Gemology	6,336	3,456	-	-	-
Cosmetology	16,208	17,440	9,728	23,216	21,696
Criminal Justice	11,696	12,256	14,160	13,296	8,016
EMT	15,920	20,256	20,256	15,008	20,096

**Contact Hours by Instructional Area - Technical
Spring Semesters Only**

Instructional Area:	2013	2014	2015	2016	2017
Sec. General Business	32,864	30,000	25,536	23,920	13,904
CIS	20,720	20,352	20,368	15,680	10,544
Welding	33,872	41,376	40,176	40,320	35,296
Air Conditioning	51,776	50,592	35,424	23,304	21,104
Vocational Nursing	33,594	29,522	34,103	27,995	20,360
A.D. Nursing	16,800	18,144	20,496	12,432	8,736
Other Health	11,440	11,456	9,024	8,224	7,968
Surg Tech	4,000	4,400	2,800	2,400	3,600
Radiology	17,248	17,248	17,248	15,840	18,576
EMT	19,632	17,760	20,576	13,344	14,976
Nurse Aide	-	3,136	5,904	7,728	4,064
Drafting	8,352	12,736	7,840	6,624	9,120
Electrician	-	3,200	2,080	7,248	4,544
Electronics/Electro-Mechanical	14,048	15,072	19,616	12,736	12,704
Plumbing	-	1,536	1,248	-	-
Horology	4,320	8,640	10,080	9,936	7,200
Jewelry	30,624	24,000	36,048	24,336	21,024
Gemology	4,032	5,760	-	-	-
Cosmetology	8,960	14,112	13,616	18,496	14,256
Criminal Justice	14,704	11,424	15,680	14,736	11,680

**Contact Hours by Instructional Area - Technical
Summer I Semesters Only**

Instructional Area:	2012	2013	2014	2015	2016
Sec. General Business	2,544	4,272	3,136	1,568	2,944
CIS	1,056	816	2,288	960	1,472
Welding	20,448	27,952	24,544	21,488	27,696
Air Conditioning	33,616	29,312	27,440	17,600	10,200
Vocational Nursing	11,040	9,600	11,088	9,600	9,600
A.D. Nursing	9,856	10,368	8,960	8,960	8,832
Other Health	2,400	2,160	1,440	1,968	1,680
Surg Tech	3,120	3,120	1,872	2,080	2,496
Radiology	14,144	13,536	14,400	13,968	14,160
EMT	2,880	7,888	8,352	11,136	5,568
Drafting	-	2,144	672	320	992
Electronics/Electro-Mechanical	-	-	-	-	512
Electrician	-	-	1,920	-	-
Plumbing	-	-	864	-	-
Horology	3,456	3,456	5,328	4,608	4,032
Jewelry	17,712	9,792	12,384	10,800	9,216
Gemology	-	-	-	9,216	5,760
Cosmetology	1,952	6,944	10,416	6,304	11,904
Criminal Justice	1,200	576	1,888	1,920	672

**Contact Hours by Instructional Area - Technical
Summer II Semesters Only**

Instructional Area:	2012	2013	2014	2015	2016
Sec. General Business	576	1,152	672	256	-
CIS	288	800	864	576	480
Welding	-	-	-	-	-
Air Conditioning	-	-	-	-	-
Vocational Nursing	12,558	10,920	12,558	10,920	10,010
A.D. Nursing	-	-	-	-	-
Other Health	1,664	768	736	688	1,536
EMT	5,776	-	-	-	-
Radiology	-	-	-	-	-
Drafting	-	-	-	288	-
Electronics/Electro-Mechanical	-	-	-	-	-
Horology	-	-	-	-	-
Jewelry	-	-	-	-	-
Gemology	-	-	-	-	-
Cosmetology	1,520	-	-	-	-
Criminal Justice	720	240	336	288	720

**Contact Hours by Instructional Area - Continuing Education
Quarter 1 Only**

Instructional Area:	2012	2013	2014	2015	2016
Architecture and Precision Production	192	324	144	-	-
Business and Management	263	192	220	7,168	14,992
Communications	-	-	3,024	6,640	4,544
Computer and Information Sciences	472	408	168	210	233
Construction Trades	329	-	-	-	-
Consumer and Homemaking	592	800	520	-	696
Electrical & Power Trans I	-	-	-	384	-
Engineering Related	958	576	-	3,668	1,420
Foreign Languages	-	-	-	72	-
Health Occupations	3,710	3,118	4,010	3,964	3,610
Health Occupations, Other	10,621	16,386	4,946	10,905	9,472
Health Occupations, VN	-	-	-	-	-
Mathematics	-	24	-	-	-
Physical Education & Fitness	-	-	62	-	-
Mechanics and Repairers-Automotive	-	-	-	156	-
Mechanics and Repairers-Diesel	600	864	1,600	1,400	-
Mechanics and Repairers-Electronics	-	-	-	-	-
Protective Services	-	12,464	-	11,296	9,576
Psychology and Social Sciences	-	-	-	-	-
Visual and Performing Arts	864	1,248	1,152	480	864
Total Contact Hours	18,601	36,404	15,846	46,343	45,407

**Contact Hours by Instructional Area - Continuing Education
Quarter 2 Only**

Instructional Area:	2013	2014	2015	2016	2017
Agriculture	-	-	-	-	-
Architecture and Precision Production	144	144	120	-	-
Business and Management	184	384	1,125	14,548	564
Communications	-	4,416	1,200	3,072	816
Computer and Information Sciences	336	-	128	243	188
Construction Trades	-	-	384	-	-
Consumer and Homemaking	-	1,808	1,464	-	-
Engineering Related	1,184	16	720	1,182	512
English Language	-	-	-	-	24
Foreign Languages	-	-	336	-	-
Health Occupations	2,310	2,310	2,310	2,310	3,502
Health Occupations, Other	6,387	8,448	4,454	2,795	7,904
Health Occupations, VN	-	-	-	-	-
Mathematics	-	-	-	-	-
Mechanics and Repairers-Automotive	-	-	1,264	-	-
Mechanics and Repairers-Diesel	-	800	2,240	800	1,000
Mechanics and Repairers-Electronics	-	-	-	-	-
Protective Services	18,552	-	13,120	-	-
Psychology and Social Sciences	-	-	-	-	-
Visual and Performing Arts	1,152	768	960	480	768
Total Contact Hours	30,249	19,094	29,825	25,430	15,278

**Contact Hours by Instructional Area - Continuing Education
Quarter 3 Only**

Instructional Area:	2012	2013	2014	2015	2016
Architecture and Precision Production	144	264	144	120	-
Business and Management	552	852	132	1,764	330
Career Pilot	-	-	-	-	-
Communications	-	-	72	-	-
Computer and Information Sciences	340	252	360	323	74
Construction Trades	536	-	-	192	-
Consumer and Homemaking	2,124	16	2,288	2,880	1,336
Engineering Related	5,863	656	96	680	-
English Language	-	-	-	-	-
Foreign Languages	-	-	-	-	-
Health Occupations	1,676	3,856	2,104	1,600	816
Health Occupations, Other	5,954	12,031	7,600	12,946	11,807
Health Occupations, VN	490		406	-	656
Mathematics	-	-	-	24	-
Mechanics and Repairers-Automotive	-	-	-	1,968	-
Mechanics and Repairers-Diesel	200	2,000	1,000	-	1,300
Mechanics and Repairers-Electronics	-	-	-	-	-
Protective Services	10,144	-	-	-	13,776
Psychology and Social Sciences	-	-	-	-	-
Visual and Performing Arts	-	-	-	-	-
Total Contact Hours	28,023	19,927	14,202	22,497	30,095

**Contact Hours by Instructional Area - Continuing Education
Quarter 4 Only**

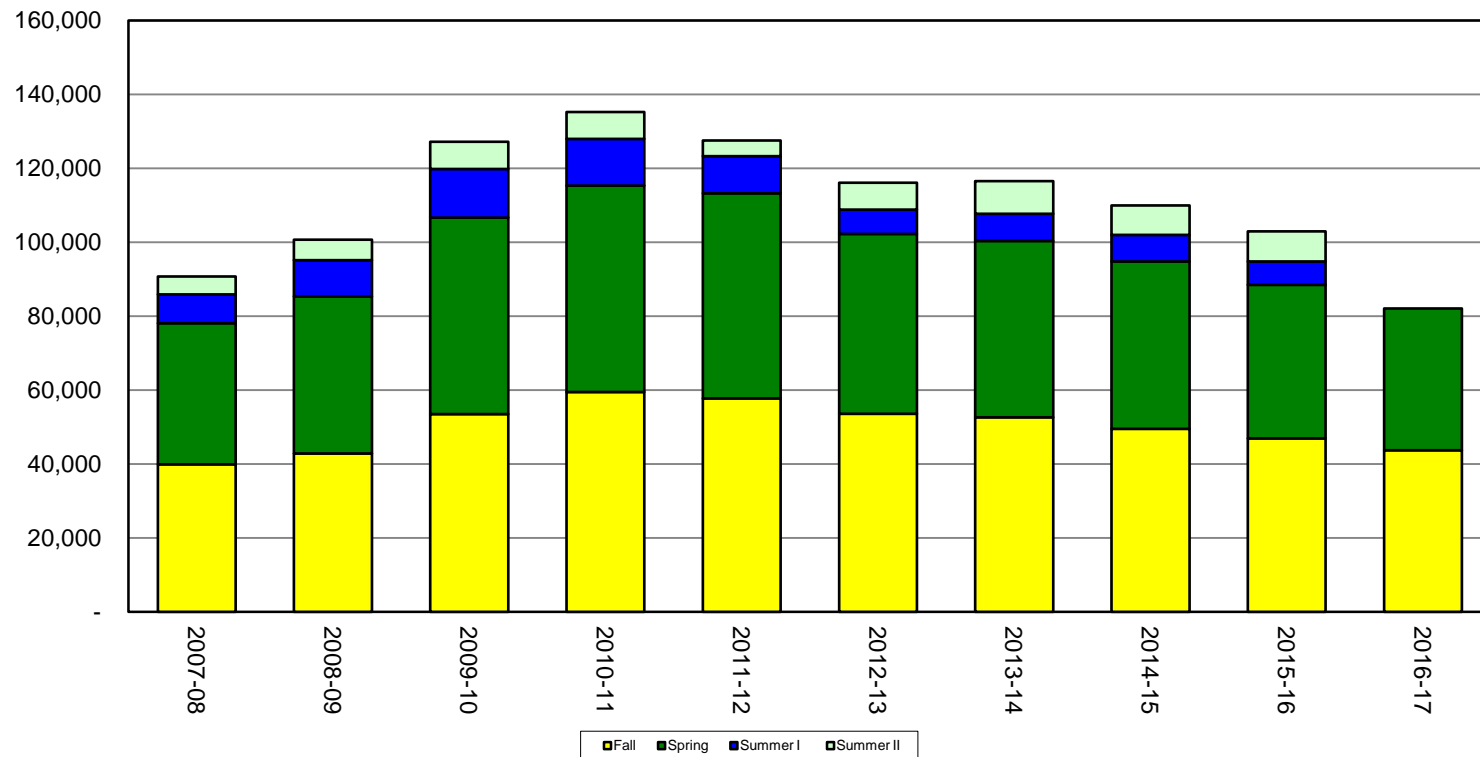
Instructional Area:	2012	2013	2014	2015	2016
Agriculture	-	-	-	-	-
Architecture and Precision Production	-	144	-	-	-
Business and Management	3,515	872	3,628	713	11,268
Communications	-	-	192	192	3,704
Computer and Information Sciences	508	899	-	195	202
Construction Trades	1,112	256	-	928	-
Consumer and Homemaking	104	848	8	1,088	512
Engineering Related	920	3,552	40	704	2,114
English Language	24	96	64	16	-
Foreign Languages	-	-	-	-	24
Health Occupations	400	1,168	3,510	-	1,000
Health Occupations, Other	5,640	9,790	9,814	3,977	4,826
Health Occupations, VN	-	490	-	-	-
Mathematics	-	-	-	-	-
Mechanics and Repairers-Automotive	-	-	-	2,488	-
Mechanics and Repairers-Diesel	200	896	1,100	-	-
Mechanics and Repairers-Electronics	-	-	-	-	-
Protective Services	-	-	12,464	-	308
Psychology and Social Sciences	-	-	-	-	-
Visual and Performing Arts	48	-	-	-	-
Total Contact Hours	12,471	19,011	30,820	10,301	23,958

Credit Hours by Semester

Semester	2007-08	2008-09	2009-10	2010-11	2011-12	2012-13	2013-14	2014-15	2015-16	2016-17
Fall	39,883	42,821	53,530	59,488	57,780	53,572	52,683	49,509	46,928	43,715
Spring	38,229	42,547	53,144	55,864	55,469	48,726	47,639	45,277	41,536	38,403
Summer I	7,803	9,773	13,181	12,639	10,044	6,522	7,392	7,250	6,386	n/a
Summer II	4,868	5,539	7,353	7,216	4,228	7,322	8,846	7,893	8,136	n/a
Total	90,783	100,680	127,208	135,207	127,521	116,142	116,560	109,929	102,986	82,118

using CBM00S starting 2012-2013

Credit Hours by Semester

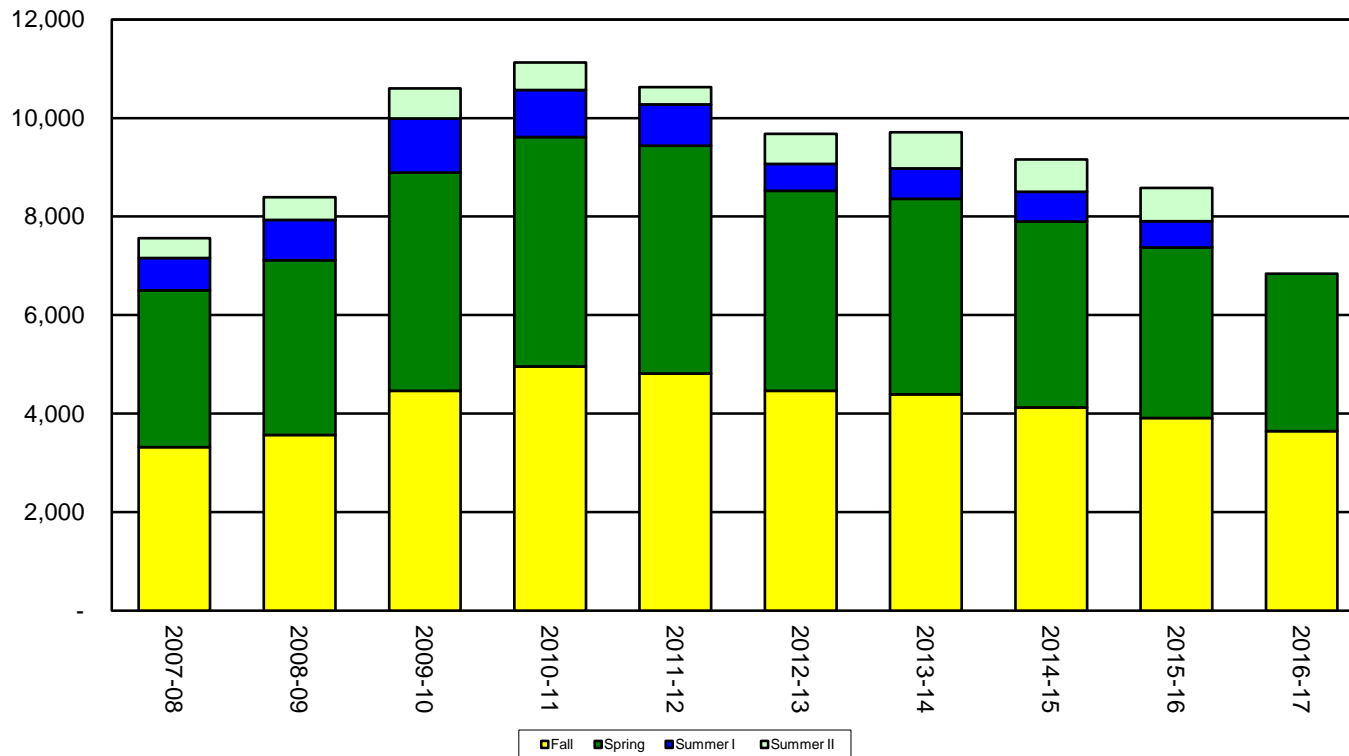


Full-time Equivalent Enrollment by Semester

Semester	2007-08	2008-09	2009-10	2010-11	2011-12	2012-13	2013-14	2014-15	2015-16	2016-17
Fall	3,319	3,569	4,461	4,957	4,815	4,464	4,390	4,126	3,911	3,643
Spring	3,186	3,546	4,429	4,655	4,622	4,060	3,970	3,773	3,461	3,200
Summer I	650	814	1,098	955	837	544	616	604	532	n/a
Summer II	406	462	612	563	352	610	737	658	678	n/a
Total	7,561	8,391	10,600	11,130	10,626	9,678	9,713	9,161	8,582	6,843

using CBM00S starting 2012-13

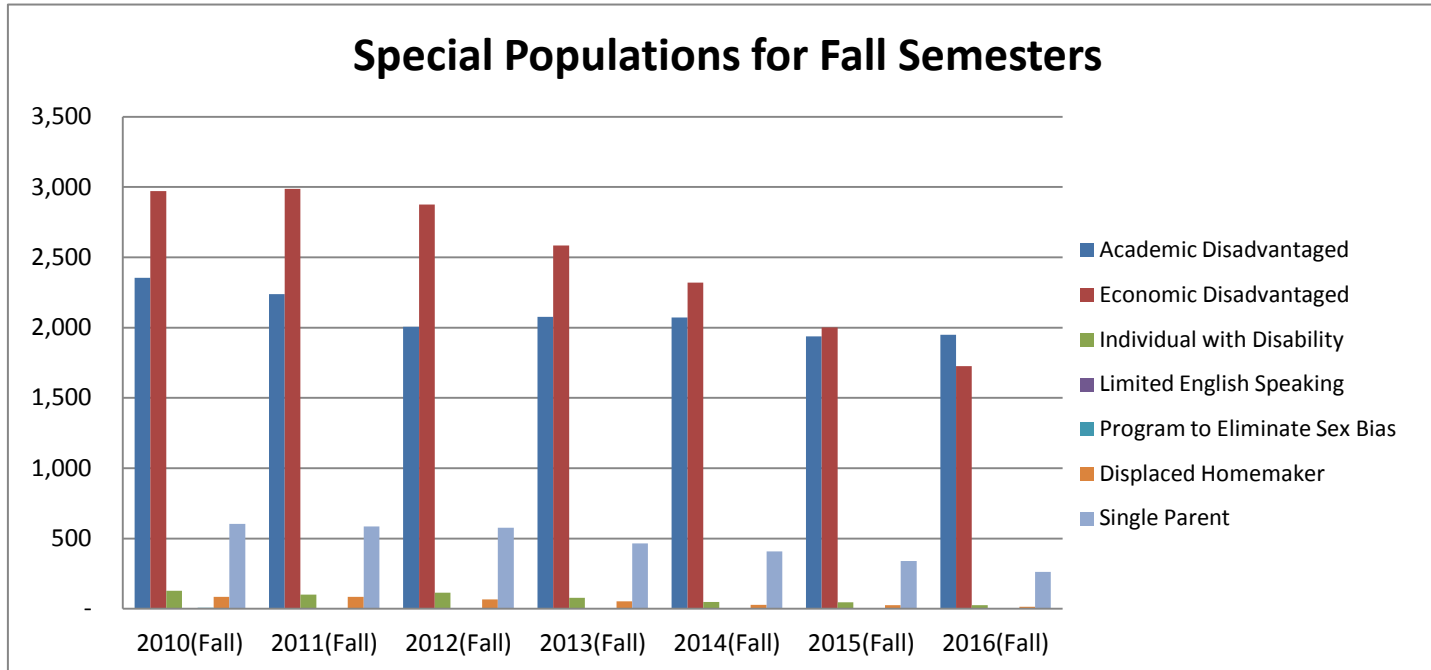
Full-time Equivalent Enrollment by Semester



Special Populations Headcount

	2010(Fall)	2011(Fall)	2012(Fall)	2013(Fall)	2014(Fall)	2015(Fall)	2016(Fall)
Academic Disadvantaged	2,355	2,239	2,007	2,076	2,072	1,938	1,950
Economic Disadvantaged	2,971	2,987	2,876	2,583	2,320	2,001	1,726
Individual with Disability	128	101	115	77	49	46	26
Limited English Speaking	-	-	-	-	-	-	-
Program to Eliminate Sex Bias	7	3	2	-	-	-	-
Displaced Homemaker	84	84	67	52	27	25	15
Single Parent	603	586	577	465	409	339	262
Total SP Categories	6,148	6,000	5,644	5,253	4,877	4,349	3,979

Special Populations for Fall Semesters



Remedial First-Time Students Fall Semesters Only

2016	Female		Male		Total	
	Number	Percent	Number	Percent	Number	Percent
Caucasian	166	59.5%	95	50.5%	261	55.9%
African American	47	16.8%	40	21.3%	87	18.6%
Hispanic	52	18.6%	46	24.5%	98	21.0%
Asian	1	0.4%	3	1.6%	4	0.9%
Native American	8	2.9%	2	1.1%	10	2.1%
Other	5	1.8%	2	1.1%	7	1.5%
Total	279	100.0%	188	100.0%	467	100.0%

2015	Female		Male		Total	
	Number	Percent	Number	Percent	Number	Percent
Caucasian	166	59.5%	93	49.5%	259	55.5%
African American	68	24.4%	48	25.5%	116	24.8%
Hispanic	59	21.1%	27	14.4%	86	18.4%
Asian	1	0.4%	2	1.1%	3	0.6%
Native American	5	1.8%	2	1.1%	7	1.5%
Other	3	1.1%	4	2.1%	7	1.5%
Total	302	100.0%	176	100.0%	478	100.0%

2014	Female		Male		Total	
	Number	Percent	Number	Percent	Number	Percent
Caucasian	165	54.6%	93	52.8%	258	54.0%
African American	57	18.9%	48	27.3%	105	22.0%
Hispanic	34	11.3%	27	15.3%	61	12.8%
Asian	1	0.3%	2	1.1%	3	0.6%
Native American	7	2.3%	2	1.1%	9	1.9%
Other	4	1.3%	4	2.3%	8	1.7%
Total	268	100.0%	176	100.0%	444	100.0%

**Service Area Graduates Enrolled in Higher Education
in Fall 2011**

County	District	Total Enrolling in Higher Education		Total Enrolling in Paris Junior College		Total Graduates
		Number	Percent	Number	Percent	
Delta	Cooper ISD	38	56.7%	23	34.3%	67
	Total Delta County	38	56.7%	23	34.3%	67
Lamar	Chisum ISD	37	56.1%	27	40.9%	66
	North Lamar ISD	78	39.8%	51	26.0%	196
	Paris ISD	101	54.6%	67	36.2%	185
	Prairiland ISD	45	57.7%	38	48.7%	78
	Roxton ISD					
	Total Lamar County	261	49.7%	183	34.9%	525
Hopkins	Cumby ISD	17	54.8%	5	16.1%	31
	Como-Pickton CISD	22	50.0%	12	27.3%	44
	North Hopkins ISD	17	53.1%	8	25.0%	32
	Sulphur Springs ISD	113	50.9%	55	24.8%	222
	Total Hopkins County	169	51.4%	80	24.3%	329
Hunt	Bland ISD	18	48.6%	-	0.0%	37
	Boles ISD	21	51.2%	10	24.4%	41
	Caddo Mills ISD	59	55.1%	26	24.3%	107
	Campbell ISD	8	27.6%	5	17.2%	29
	Celeste ISD	20	51.3%	11	28.2%	39
	Commerce ISD	59	52.7%	10	8.9%	112
	Greenville ISD	120	45.5%	57	21.6%	264
	Lone Oak ISD	33	45.8%	11	15.3%	72
	Quinlan ISD	48	32.4%	18	12.2%	148
	Wolfe City ISD	23	52.3%	6	13.6%	44
	Total Hunt County	409	45.8%	154	17.2%	893
Fannin	Fannindel ISD					
	Honey Grove ISD	28	58.3%	12	25.0%	48
	Total Fannin County	28	58.3%	12	25.0%	48
Red River	Clarksville ISD	18	40.0%	13	28.9%	45
	Detroit ISD	16	50.0%	10	31.3%	32
	Rivercrest ISD	29	67.4%	13	30.2%	43
	Total Red River County	63	52.5%	36	30.0%	120
	Grand Total Service Area	968	48.8%	488	24.6%	1,982

**Service Area Graduates Enrolled in Higher Education
in Fall 2012**

County	District	Total Enrolling in Higher Education		Total Enrolling in Paris Junior College		Total Graduates
		Number	Percent	Number	Percent	
Delta	Cooper ISD	34	66.7%	17	33.3%	51
	Total Delta County	34	66.7%	17	33.3%	51
Lamar	Chisum ISD	32	51.6%	20	32.3%	62
	North Lamar ISD	102	58.0%	73	41.5%	176
	Paris ISD	114	61.3%	53	28.5%	186
	Prairiland ISD	46	55.4%	29	34.9%	83
	Roxton ISD					
	Total Lamar County	294	58.0%	175	34.5%	507
Hopkins	Cumby ISD					
	Como-Pickton CISD	24	40.7%	13	22.0%	59
	North Hopkins ISD	15	55.6%	8	29.6%	27
	Sulphur Springs ISD	125	49.6%	59	23.4%	252
	Total Hopkins County	164	48.5%	80	23.7%	338
Hunt	Bland ISD	21	52.5%	4	10.0%	40
	Boles ISD	15	37.5%	6	15.0%	40
	Caddo Mills ISD	66	62.9%	30	28.6%	105
	Campbell ISD					
	Celeste ISD	15	55.6%	9	33.3%	27
	Commerce ISD	56	57.7%	17	17.5%	97
	Greenville ISD	114	50.9%	48	21.4%	224
	Lone Oak ISD	38	46.9%	17	21.0%	81
	Quinlan ISD	61	39.9%	17	11.1%	153
	Wolfe City ISD	21	53.8%	7	17.9%	39
	Total Hunt County	407	50.5%	155	19.2%	806
Fannin	Fannindel ISD					
	Honey Grove ISD	25	54.3%	13	28.3%	46
	Total Fannin County	25	54.3%	13	28.3%	46
Red River	Clarksville ISD	17	36.2%	5	10.6%	47
	Detroit ISD	19	57.6%	13	39.4%	33
	Rivercrest ISD	27	64.3%	7	16.7%	42
	Total Red River County	63	51.6%	25	20.5%	122
	Grand Total Service Area	987	52.8%	465	24.9%	1,870

**Service Area Graduates Enrolled in Higher Education
in Fall 2013**

County	District	Total Enrolling in Higher Education		Total Enrolling in Paris Junior College		Total Graduates
		Number	Percent	Number	Percent	
Delta	Cooper ISD	24	47.1%	11	21.6%	51
	Total Delta County	24	47.1%	11	21.6%	51
Lamar	Chisum ISD	34	58.6%	24	41.4%	58
	North Lamar ISD	146	66.4%	113	51.4%	220
	Paris ISD	108	63.9%	71	42.0%	169
	Prairiland ISD	45	50.0%	38	42.2%	90
	Roxton ISD					
	Total Lamar County	333	62.0%	246	45.8%	537
Hopkins	Cumby ISD	21	46.7%	8	17.8%	45
	Como-Pickton CISD	26	52.0%	14	28.0%	50
	North Hopkins ISD	17	54.8%	9	29.0%	31
	Sulphur Springs ISD	140	59.1%	54	22.8%	237
	Total Hopkins County	204	56.2%	85	23.4%	363
Hunt	Bland ISD	11	34.4%	-	0.0%	32
	Boles ISD	22	59.5%	9	24.3%	37
	Caddo Mills ISD	55	53.4%	26	25.2%	103
	Campbell ISD					
	Celeste ISD	24	49.0%	5	10.2%	49
	Commerce ISD	61	52.6%	18	15.5%	116
	Greenville ISD	117	48.0%	61	25.0%	244
	Lone Oak ISD	31	52.5%	13	22.0%	59
	Quinlan ISD	49	37.7%	19	14.6%	130
	Wolfe City ISD	21	63.6%	9	27.3%	33
	Total Hunt County	391	48.7%	160	19.9%	803
Fannin	Fannindel ISD					
	Honey Grove ISD	24	60.0%	14	35.0%	40
	Total Fannin County	24	60.0%	14	35.0%	40
Red River	Clarksville ISD	19	39.6%	6	12.5%	48
	Detroit ISD	19	57.6%	11	33.3%	33
	Rivercrest ISD	34	72.3%	7	14.9%	47
	Total Red River County	72	56.3%	24	18.8%	128
Grand Total Service Area		1,048	54.5%	540	28.1%	1,922

**Service Area Graduates Enrolled in Higher Education
in Fall 2014**

County	District	Total Enrolling in Higher Education		Total Enrolling in Paris Junior College		Total Graduates
		Number	Percent	Number	Percent	
Delta	Cooper ISD	32	49.2%	20	30.8%	65
	Total Delta County	32	49.2%	20	30.8%	65
Lamar	Chisum ISD	47	69.1%	35	51.5%	68
	North Lamar ISD	68	36.4%	68	36.4%	187
	Paris ISD	94	54.3%	59	34.1%	173
	Prairiland ISD	31	40.8%	20	26.3%	76
	Roxton ISD	-		-		-
	Total Lamar County	240	47.6%	182	36.1%	504
Hopkins	Cumby ISD	-		-		-
	Como-Pickton CISD	16	36.4%	9	20.5%	44
	North Hopkins ISD	18	52.9%	11	32.4%	34
	Sulphur Springs ISD	121	52.4%	43	18.6%	231
	Total Hopkins County	155	50.2%	63	20.4%	309
Hunt	Bland ISD	16	36.4%	-	0.0%	44
	Boles ISD	24	55.8%	9	20.9%	43
	Caddo Mills ISD	59	53.2%	20	18.0%	111
	Campbell ISD	-		-		-
	Celeste ISD	16	41.0%	-	0.0%	39
	Commerce ISD	54	55.1%	6	6.1%	98
	Greenville ISD	95	46.6%	38	18.6%	204
	Lone Oak ISD	37	55.2%	13	19.4%	67
	Quinlan ISD	52	37.4%	20	14.4%	139
	Wolfe City ISD	34	72.3%	11	23.4%	47
	Total Hunt County	387	48.9%	117	14.8%	792
Fannin	Fannindel ISD					
	Honey Grove ISD	21	65.6%	7	21.9%	32
	Total Fannin County	21	65.6%	7	21.9%	32
Red River	Clarksville ISD	22	44.9%	6	12.2%	49
	Detroit ISD	16	47.1%	12	35.3%	34
	Rivercrest ISD	26	66.7%	13	33.3%	39
	Total Red River County	64	52.5%	31	25.4%	122
Grand Total Service Area		899	49.3%	420	23.0%	1,824

**Service Area Graduates Enrolled in Higher Education
in Fall 2015**

County	District	Total Enrolling in Higher Education		Total Enrolling in Paris Junior College		Total Graduates
		Number	Percent	Number	Percent	
Delta	Cooper ISD	42	60.0%	33	47.1%	70
	Total Delta County	42	60.0%	33	47.1%	70
Lamar	Chisum ISD	42	59.2%	31	43.7%	71
	North Lamar ISD	110	57.6%	73	38.2%	191
	Paris ISD	93	48.7%	57	29.8%	191
	Prairiland ISD	45	53.6%	28	33.3%	84
	Roxton ISD	-		-		-
	Total Lamar County	290	54.0%	189	35.2%	537
Hopkins	Cumby ISD	16	48.5%	6	18.2%	33
	Como-Pickton CISD	19	42.2%	10	22.2%	45
	North Hopkins ISD	-		-		-
	Sulphur Springs ISD	148	55.0%	59	21.9%	269
	Total Hopkins County	183	52.7%	75	21.6%	347
Hunt	Bland ISD	22	55.0%	6	15.0%	40
	Boles ISD	20	64.5%	11	35.5%	31
	Caddo Mills ISD	57	62.0%	29	31.5%	92
	Campbell ISD	12	44.4%	6	22.2%	27
	Celeste ISD	23	53.5%	9	20.9%	43
	Commerce ISD	47	54.7%	10	11.6%	86
	Greenville ISD	121	45.3%	54	20.2%	267
	Lone Oak ISD	33	42.3%	12	15.4%	78
	Quinlan ISD	59	37.8%	26	16.7%	156
	Wolfe City ISD	24	85.7%	9	32.1%	28
	Total Hunt County	418	49.3%	172	20.3%	848
Fannin	Fannindel ISD	-		-		-
	Honey Grove ISD	17	47.2%	5	13.9%	36
	Total Fannin County	17	47.2%	5	13.9%	36
Red River	Clarksville ISD	26	52.0%	10	20.0%	50
	Detroit ISD	-		-		-
	Rivercrest ISD	30	54.5%	14	25.5%	55
	Total Red River County	56	53.3%	24	22.9%	105
	Grand Total Service Area	1,006	51.8%	498	25.6%	1,943

PJC Transfers to Universities
Fall Semesters Cohorts of first time students

Universities Attended in Texas	2011	2012	2013	2014	2015
Angelo State University	-	1	-	-	1
Baylor University	-	1	-	1	-
Dallas Baptist	-	1	-	-	3
East Texas Baptist	1	2	1	1	-
Lamar University - Beaumont	-	1	1	-	-
LeTourneau University	-	1	-	-	-
Lubbock Christian University	-	-	1	-	-
Sam Houston State University	-	2	1	1	-
Stephen F. Austin University	-	1	4	5	2
Southern Methodist University	-	-	1	2	1
Southwest Assemblies of God	-	1	-	-	-
Tarleton State University	1	3	3	2	1
Texas Christian University	-	-	-	-	1
Texas A&M - Commerce	77	47	79	65	82
Texas A&M - Corpus Christi	2	-	-	-	3
Texas A&M University	-	2	4	2	6
Texas A&M - Galveston	1	-	-	-	-
Texas A&M - Kingsville	-	1	-	-	-
Texas A&M - San Antonio	-	-	-	-	1
Texas A&M - Texarkana	-	-	-	1	5
Texas College - Tyler	-	-	-	1	-
Texas State University - San Marcos	-	-	1	2	1
Texas Tech University	2	-	5	-	1
Texas Wesleyan University	-	1	-	1	-
Texas Woman's University	2	-	4	2	-

PJC Transfers to Universities
Fall Semesters Cohorts of first time students

Universities Attended in Texas	2011	2012	2013	2014	2015
University of Dallas	-	-	-	-	1
University of Mary Hardin-Baylor	-	-	-	1	-
University of North Texas	3	6	8	6	7
University of Texas Pan American	-	1	-	-	-
University of Texas - Arlington	1	2	7	5	4
University of Texas - Austin	-	-	-	-	1
University of Texas - Dallas	-	2	-	3	3
University of Texas - San Antonio	-	-	1	-	-
University of Texas of the Permian Basin	-	-	1	-	1
University of Texas - Tyler	1	6	1	7	7
University of Houston	-	-	1	-	2
St. Edwards University	-	-	1	-	-
Wayland Baptist Univ-External Campus	-	-	-	1	-
West Texas A&M University	1	1	1	-	4
Concordia Univ - Texas	-	-	-	-	1
Huston-Tillotson Univ	-	-	-	-	1
Southwestern Univ	-	-	-	-	1

HEALTH SCIENCE INSTITUTIONS

Texas A&M College of Veterinary Med	-	-	-	-	-
Texas A&M HSC-Medical & Dental	-	-	-	-	-
Texas Tech Health Sciences Center	-	-	-	-	-
University of Texas - Galveston	-	-	-	-	1
University of Texas - Dallas	-	-	-	-	-
University of Texas - San Antonio	-	-	-	-	-

PJC Transfers to Universities
Fall Semesters Cohorts of first time students

Universities Attended out of Texas	2012	2013	2014	2015
Alabama - University of Alabama	-	-	-	1
Alabama - University of South Alabama	-	1	-	-
Alaska - U of Alaska Anchorage	1	-	-	-
Arizona - Everest University	1	-	-	-
Arkansas - Arkansas Baptist College	-	-	-	1
Arkansas - Harding University	1	1	-	-
Arkansas - University of Central Arkansas	1	-	-	-
Arkansas - Southern Arkansas University	-	4	-	1
Arkansas - University of Arkansas	-	1	-	1
Arkansas - University of the Ozarks	-	-	-	1
Arkansas - Arkansas State University	-	1	-	-
Arkansas - Arkansas Tech University	-	-	1	-
Arkansas - Henderson State University	-	2	-	-
Colorado - Colorado Technical Univ	-	-	-	1
Colorado - Univ of Northern Colorado	-	1	1	-
Florida - Daytona College	1	-	-	-
Florida - Pasco-Hernando State College	-	-	1	-
Florida - Univ of Northern Florida	-	-	1	-
Georgia - Abraham Baldwin College	1	-	-	-
Illinois - Devry University	1	-	-	-
Kansas - Benedictine College	-	-	-	1
Kansas - Newman University	1	-	-	-
Kansas - Kansas Wesleyan	-	1	-	-
Kentucky - St. Catharine	-	2	-	-
Louisiana Tech Univ	-	-	1	2
Louisiana - McNeese State Univ	-	-	-	2
Louisiana - LSU Alexandria	-	1	1	-
Michigan - Northwestern Michigan College	-	-	1	-
Mississippi - University of Southern Mississippi	1	-	-	-
Missouri - Evangel Univ				1
Missouri - Southwest Baptist Univ				2

PJC Transfers to Universities
Fall Semesters Cohorts of first time students

Universities Attended out of Texas	2012	2013	2014	2015
New Mexico - Eastern New Mexico Univ				2
New Mexico - Western New Mexico Univ				1
New York - Excelsior	1	-	-	-
North Carolina - NC State	-	1	-	-
North Carolina - Univ of NC-Wilmington	-	-	1	
North Dakota - Univ of North Dakota	-	-	1	
Ohio - Youngstown State University	1	-	-	-
Ohio - Bowling Green State University	-	1	-	-
Oklahoma - Langston University	1	-	-	-
Oklahoma - Baptist University	1	2	1	
Oklahoma - Oklahoma Christian Univ	1	-	-	-
Oklahoma - Oklahoma City University	1	-	-	-
Oklahoma - Oral Roberts Univ	-	-	1	
Oklahoma - Univ of Central Oklahoma	1	1	-	-
Oklahoma - Cameron University	-	1	-	-
Oklahoma - Northeastern State Univ	1	-	-	-
Oklahoma -University of Oklahoma	3	1	1	
Oklahoma - OSU at Okmulgee	1	-	-	-
Oklahoma - OSU at Stillwater/Tulsa	1	-	1	2
Oklahoma - Southeastern Okla State	3	1	3	2
Oklahoma - Univ of Oklahoma Health Science	-	1	-	-
Oklahoma - Spartan College of Aeronautics	1	-	-	-
Oklahoma - Univ of Science and Arts of Okla	1	-	-	-
Oregon - Oregon State Univ	1	-	-	-
Rhode Island - Johnson & Wales	-	1	-	-
Utah - Southern Utah Univ				1
Virginia - Old Dominion Univ				1
Virginia - Univ of Virginia	1	-	-	-
Virginia - Hampton Univ	-	-	1	
Virginia - Liberty Univ	-	-	1	1
Washington - Olympic College				1
West Virginia - Marshall University	-	1	-	1
ONLINE COLLEGES	1	3	6	3

**PJC Transfers to Community Colleges
Fall Semesters Cohorts of first time students**

College attended in Texas	2012	2013	2014	2015
San Antonio Com. Col. District	1	-	3	
Alvin Community College	-	-	1	
Angelina College	1	-	-	1
Austin Community Col District	1	1	1	4
Amarillo College	-	1	-	3
Blinn College	4	2	1	2
Central Texas - Traditional	-	-	1	
Cisco Junior College	3	1	1	
Clarendon College	-	-	1	
Coastal Bend College	-	-	1	1
Collin County Community College	8	11	9	13
DCCCD - Brookhaven College	2	1	1	5
DCCCD - Cedar Valley College	2	-	1	
DCCCD - Eastfield College	4	7	4	4
DCCCD - El Centro College	2	-	-	-
DCCCD - Mountain View	-	-	3	1
DCCCD - North Lake College	4	-	-	-
DCCCD - Richland College	5	3	3	1
Del Mar College	1	-	1	
Galveston College				2
Grayson College	10	3	4	12
Hill College	1	-	-	1
Houston Community College	-	1	-	-
Kilgore College	-	-	2	1
McLennan Community College	-	1	-	-
Lone Star Com.College	2	1	3	4
Navarro College	4	-	4	1
North Central Texas College	2	2	1	2
Northeast Texas Community College	10	7	6	5
Odessa College	-	-	1	1
Panola College	1	1	1	

**PJC Transfers to Community Colleges
Fall Semesters Cohorts of first time students**

College attended in Texas	2012	2013	2014	2015
Paris Junior College (still enrolled spring/sum 2017)	419	434	598	425
Ranger College			1	
South Plains CC	1	-	2	
Tarrant County CC District	-	4	3	2
Texarkana College	4	-	5	2
Texas State Technical College - Marshall	-	1		1
Trinity Valley CC	8	3	8	3
Tyler Junior College	6	2	10	11
Vernon	-	1	1	
Weatherford College	-	-	1	1
Western Texas College			1	
Wharton County Junior College			2	

PJC Transfers to Community Colleges, continued
Fall Semesters Cohorts of first time students

Colleges attended outside Texas	2012	2013	2014	2015
Alabama - Shelton State CC				1
Arkansas - College of the Ouachitas				1
Arkansas - Northwest Arkansas CC	2	-	-	-
Arizona - Yavapai College	1	-	-	-
California - College of the Canyons	1	-	-	-
California - College of the Desert Coachella	-	-	-	1
California - Mount San Antonio College	1	-	-	-
Colorado - Arapahoe Community College	-	-	1	
Colorado - Pikes Peak Community College	-	-	1	
Connecticut - Manchester Community College	-	-	1	
Florida - Hillsborough CC				1
Florida - Seminole State College	1	-	-	-
Georgia - Augusta Technical College	-	-	1	
Illinois - Central College	-	-	1	
Illinois - Oakton CC				1
Illinois - Southeastern Illinois College	-	-	1	1
Illinois- Triton College	-	-	-	-
Kansas - Butler Community College	-	-	1	
Kansas - Colby CC				1
Kansas - Fort Scott CC				1
Kansas - Neosho County CC	1	-	-	-
Kansas - Seward County CC	1	-	-	-

PJC Transfers to Community Colleges, continued
Fall Semesters Cohorts of first time students

Colleges attended outside Texas	2012	2013	2014	2015
Louisiana - Bossier Parish	1	-	-	1
Louisiana - Delgado Community College	-	-	1	
Louisiana - Southern Univ, Shreveport Bossier	-	-	1	
Michigan - Glen Oaks CC	1	-	-	-
Michigan - Oakland CC	1	-	-	-
Mississippi - Southwest Mississippi CC	1	-	-	-
New Mexico - Santa Fe CC	-	1		
New Mexico - Central New Mexico CC	1	-	-	-
New York - American Academy McAllister Inst.	1	-	-	-
New York - CUNY Hostos CC	1	-	-	-
Oklahoma - Eastern	3	1	2	2
Oklahoma - Murray State College	-	-	1	
Oklahoma - Rose State College	-	1	1	
Oklahoma - Northeastern Oklahoma A&M College	1	-	-	-
Oregon - Portland CC	-	1	-	-
Oregon - Southwestern Oregon CC	1	-	-	-
South Carolina - Greenville Technical College	-	1	-	1
South Carolina - Trident Technical College				1
Tennessee - Dyersburg State Comm. College	-	-	1	
Utah - Salt Lake CC	1	-	-	-
Virginia - Tidewater CC	-	1	-	-
Wisconsin - Fox Valley Technical College				1
Wyoming - Northwest College	-	-	1	

Graduates and Core Completers

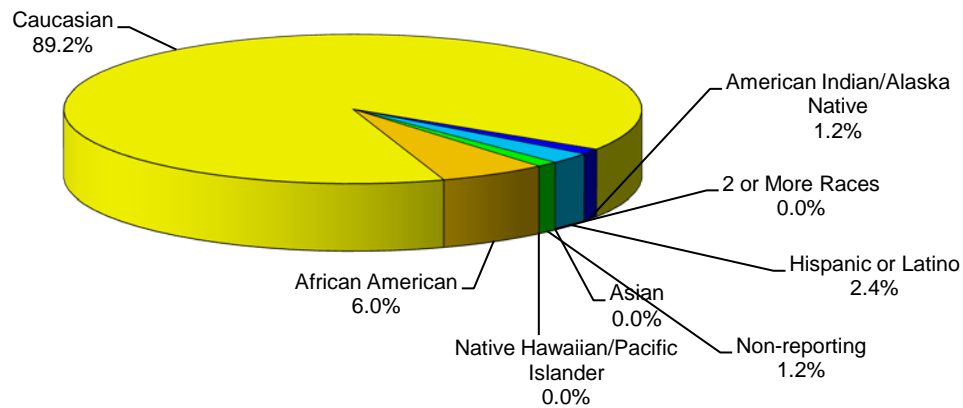
Graduates:	2006-07	2007-08	2008-09	2009-10	2010-11	2011-12	2012-13	2013-14	2014-15	2015-16
Associate Degree										
Academic										
Number	218	226	291	287	336	366	427	432	523	529
Percent	39.21%	40.43%	42.11%	40.42%	38.53%	40.99%	44.29%	43.81%	50.83%	47.19%
Technical										
Number	111	92	90	103	108	113	105	116	126	110
Percent	19.96%	16.46%	13.02%	14.51%	12.39%	12.65%	10.89%	11.76%	12.24%	9.81%
Certificates										
Number	227	241	310	320	428	414	432	438	380	482
Percent	40.83%	43.11%	44.86%	45.07%	49.08%	46.36%	44.81%	44.42%	36.93%	43.00%
Total	556	559	691	710	872	893	964	986	1029	1121
Core Completers	244	245	283	337	378	367	352	405	477	522

Employee Data

Faculty by Ethnicity Fall 2016

Ethnicity	Number	Percentage
African American	5	6.0%
Caucasian	74	89.2%
American Indian/Alaska Native	1	1.2%
Hispanic or Latino	2	2.4%
Asian	0	0.0%
2 or More Races	0	0.0%
Non-reporting	1	1.2%
Native Hawaiian/Pacific Islander	0	0.0%
Total*	83	100.0%

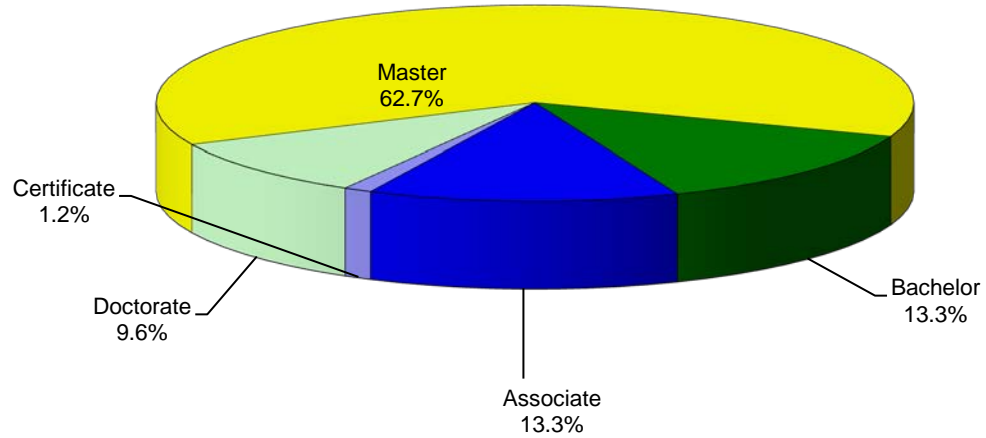
*Does not Include adjunct faculty.



Faculty by Highest Degree Earned Fall 2016

Degree	Number	Percentage
Doctorate	8	9.6%
Master	52	62.7%
Bachelor	11	13.3%
Associate	11	13.3%
Certificate	1	1.2%
Total*	83	100.0%

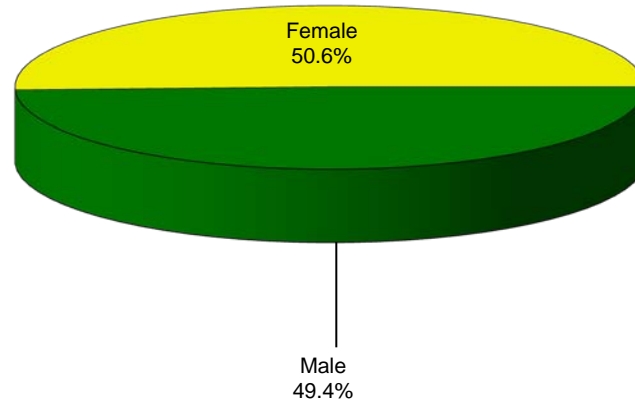
*Does not include adjunct faculty.



Faculty by Gender Fall 2016

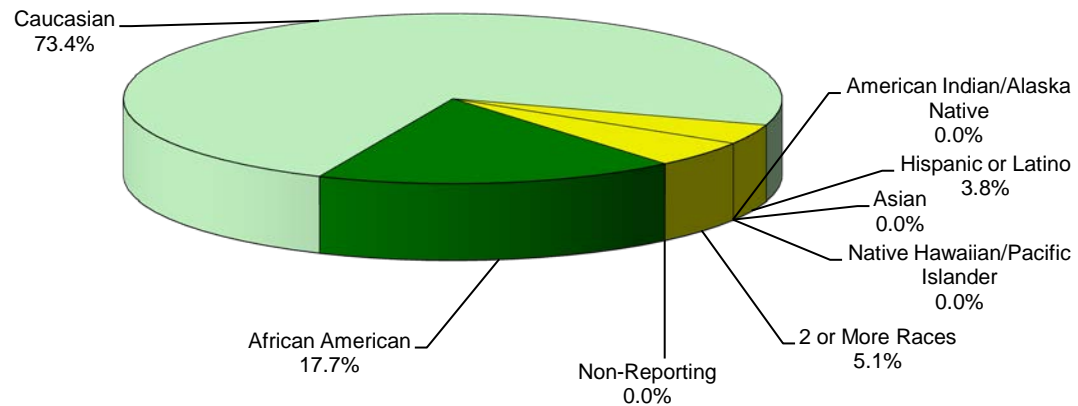
Gender	Number	Percentage
Male	41	49.4%
Female	42	50.6%
Total*	83	100.0%

*Does not include adjunct faculty.



Office and Administrative Support Staff by Ethnicity Fall 2016

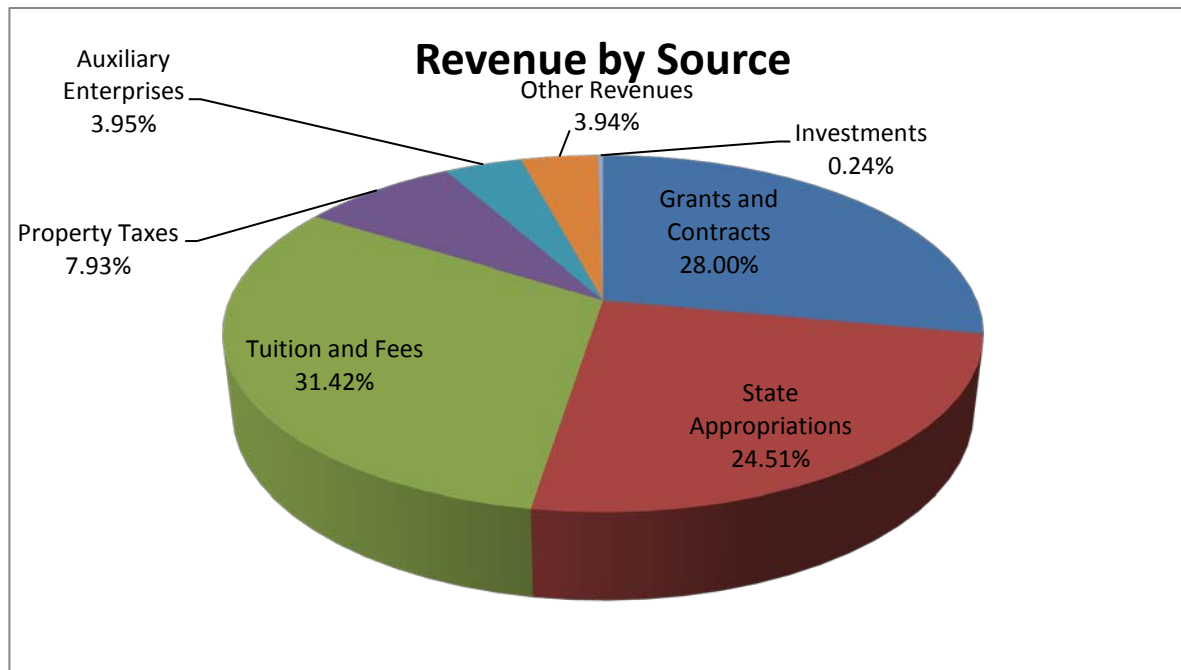
Ethnicity	Number	Percentage
African American	14	17.7%
Caucasian	58	73.4%
Hispanic or Latino	3	3.8%
American Indian/Alaska Native	0	0.0%
Asian	0	0.0%
Native Hawaiian/Pacific Islander	0	0.0%
2 or More Races	4	5.1%
Non-Reporting	0	0.0%
Total	79	100.0%



Financial Data

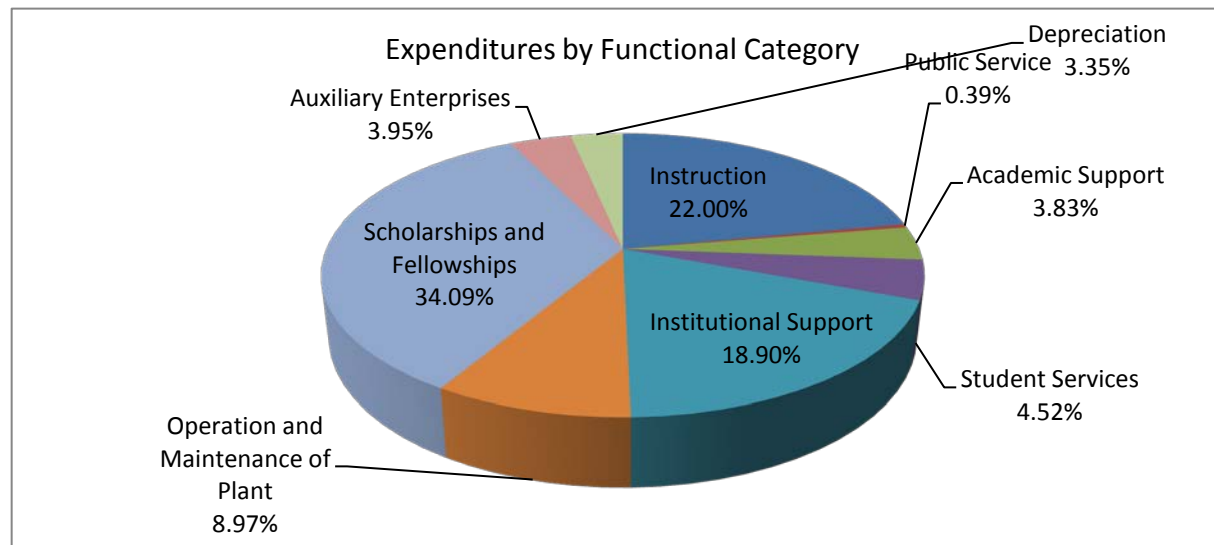
Budgeted Revenue by Source 2016-17

Grants and Contracts	\$ 10,296,313
State Appropriations	9,011,905
Tuition and Fees	11,551,800
Property Taxes	2,917,000
Auxiliary Enterprises	1,451,486
Other Revenues	1,448,760
Investments	90,000
Total Revenues	\$ 36,767,264



Budgeted Operating Expenditures by Functional Category 2016-17

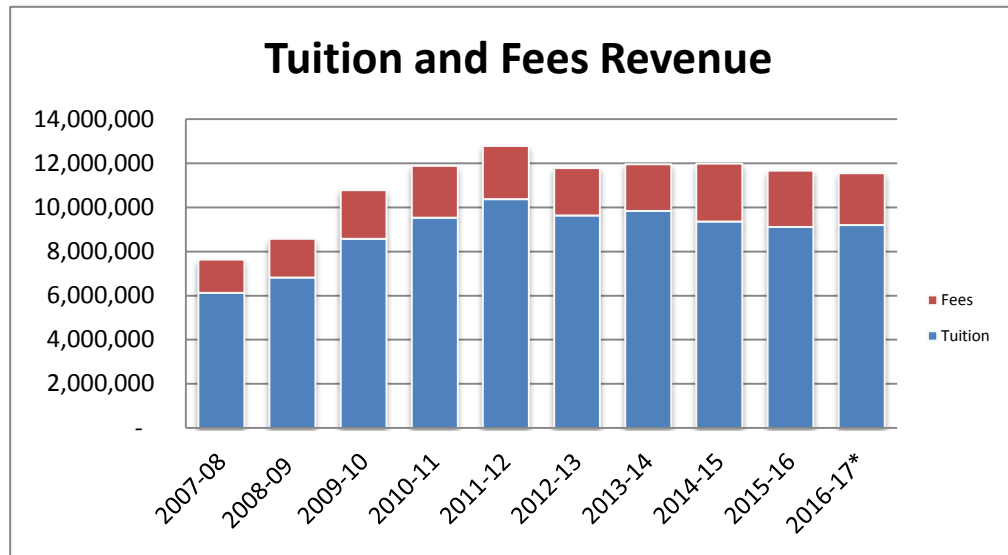
Instruction	\$ 8,088,749
Public Service	144,131
Academic Support	1,408,523
Student Services	1,662,586
Institutional Support	6,949,526
Operation and Maintenance of Plant	3,298,371
Scholarships and Fellowships	12,533,191
Auxiliary Enterprises	1,451,486
Depreciation	1,230,701
Total Operating Expenditures	\$ 36,767,264



Tuition and Fees Revenue

Fiscal Year	Tuition	Fees	Total
2007-08	6,127,357	1,498,389	7,625,746
2008-09	6,814,468	1,764,701	8,579,169
2009-10	8,578,378	2,199,622	10,778,000
2010-11	9,530,761	2,341,704	11,872,465
2011-12	10,363,730	2,408,182	12,771,912
2012-13	9,637,223	2,145,749	11,782,972
2013-14	9,830,225	2,126,355	11,956,580
2014-15	9,356,478	2,625,059	11,981,537
2015-16	9,111,877	2,549,461	11,661,338
Budgeted 2016-17*	9,191,700	2,360,100	11,551,800

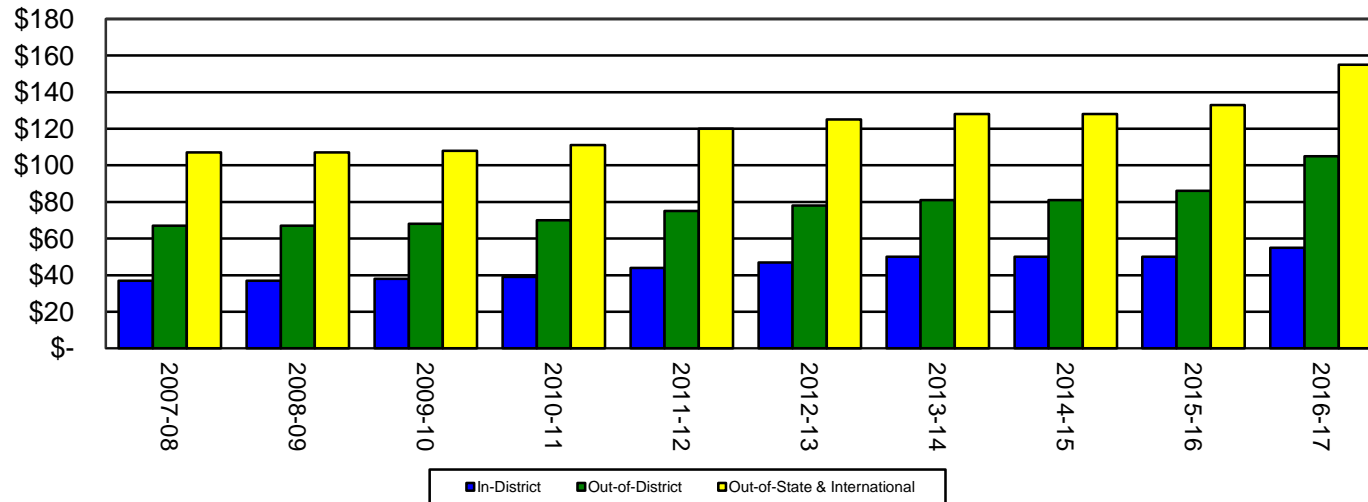
Budgeted



Per Hour Tuition Costs

Fiscal Year	In-District	Out-of-District	Out-of-State & International
2007-08	37	67	107
2008-09	37	67	107
2009-10	38	68	108
2010-11	39	70	111
2011-12	44	75	120
2012-13	47	78	125
2013-14	50	81	128
2014-15	50	81	128
2015-16	50	86	133
2016-17	55	105	155

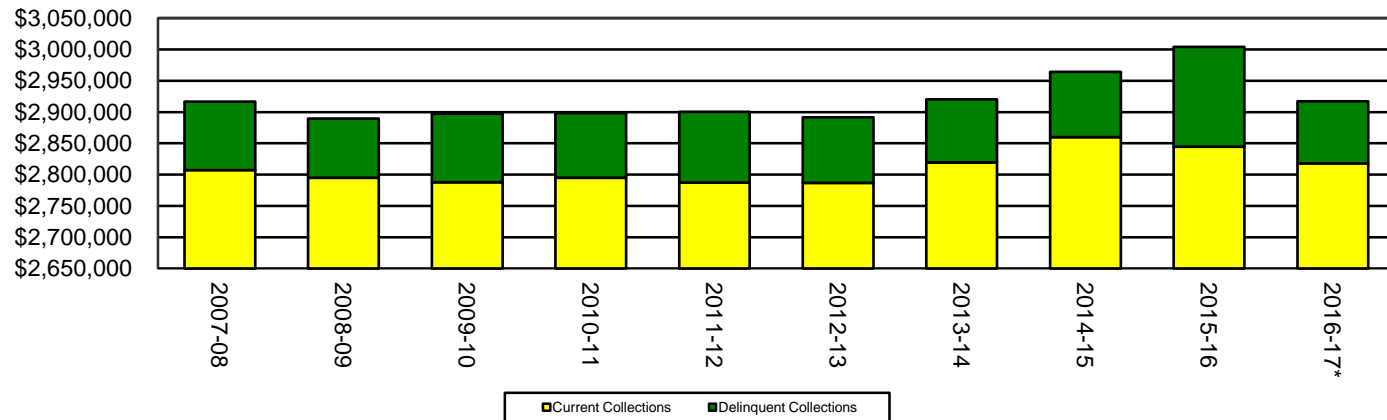
Tuition Cost per Credit Hour



Property Tax Collections

Fiscal Year	Current Tax Collections	Delinquent Collections	Total Tax Collections
2007-08	2,807,110	109,757	2,916,867
2008-09	2,795,187	94,335	2,889,522
2009-10	2,787,564	109,648	2,897,212
2010-11	2,795,000	103,389	2,898,389
2011-12	2,787,555	112,986	2,900,541
2012-13	2,786,812	104,616	2,891,428
2013-14	2,819,644	100,541	2,920,185
2014-15	2,859,705	104,325	2,964,030
2015-16	2,844,818	159,311	3,004,129
Budgeted 2016-17*	2,818,000	99,000	2,917,000

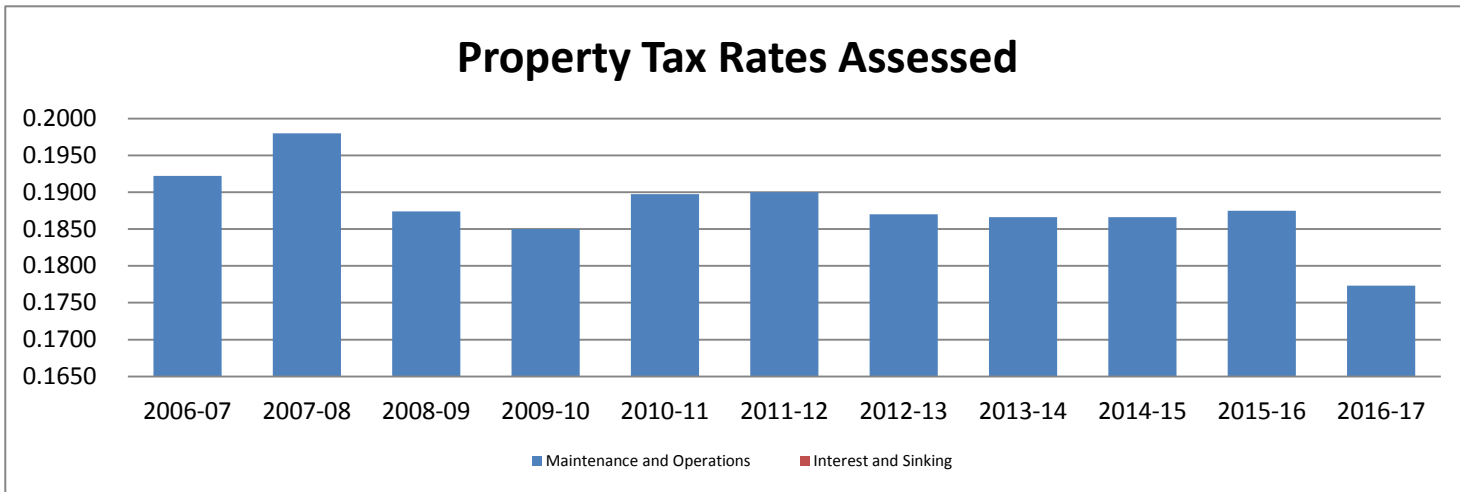
Property Tax Collections



Property Tax Rates Assessed

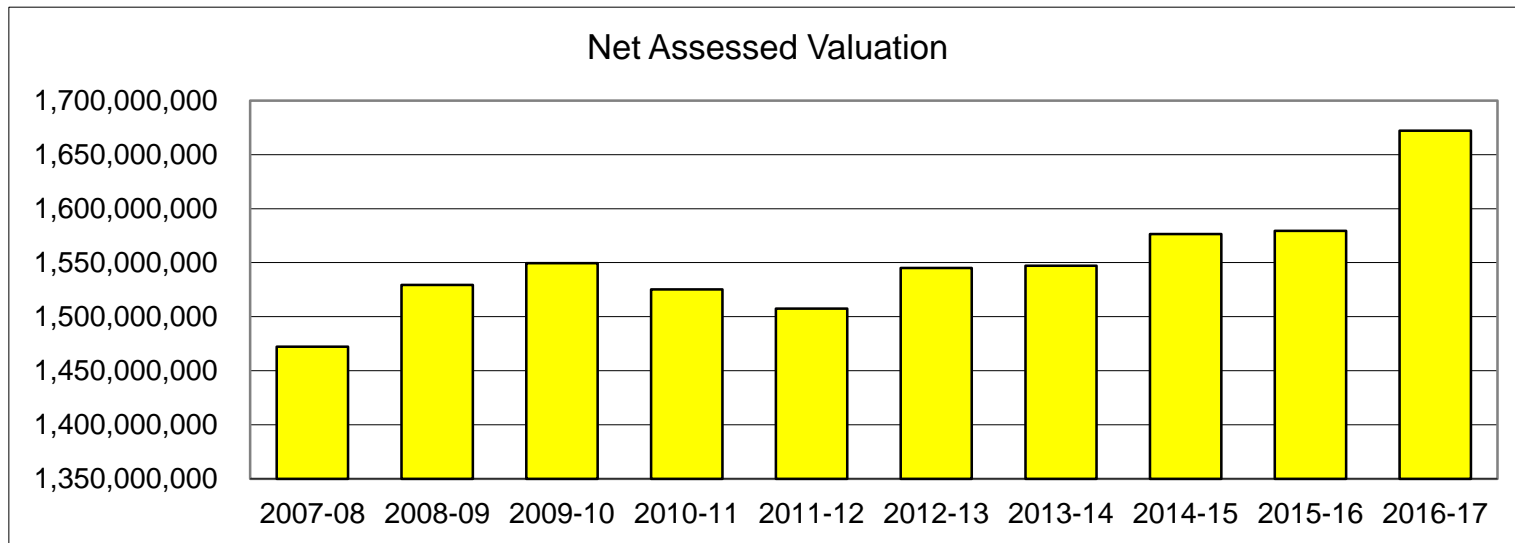
Fiscal Year	Maintenance and Operations	Interest and Sinking	Total
2006-07	0.1922	0.0000	0.1922
2007-08	0.1980	0.0000	0.1980
2008-09	0.1874	0.0000	0.1874
2009-10	0.1850	0.0000	0.1850
2010-11	0.18974	0.0000	0.18974
2011-12	0.19000	0.0000	0.19000
2012-13	0.18700	0.0000	0.18700
2013-14	0.18660	0.0000	0.18660
2014-15	0.18660	0.0000	0.18660
2015-16	0.18750	0.0000	0.18750
2016-17	0.17730	0.0000	0.17730

Property Tax Rates Assessed



Net Assessed Valuation

Fiscal Year	Assessed Valuation	Less: Exemptions	Net Assessed Valuation
2007-08	1,867,391,327	395,309,866	1,472,081,461
2008-09	2,008,299,818	478,863,243	1,529,436,575
2009-10	2,055,714,230	506,178,167	1,549,536,063
2010-11	2,065,438,985	540,197,794	1,525,241,191
2011-12	2,047,880,472	540,397,032	1,507,483,440
2012-13	2,083,119,258	538,072,809	1,545,046,449
2013-14	2,113,987,770	566,770,766	1,547,217,004
2014-15	2,258,829,833	682,439,819	1,576,390,014
2015-16	2,293,017,296	713,657,553	1,579,359,743
2016-17	2,466,533,581	794,309,795	1,672,223,786



Glossary of Terms

African American: A person having origins in any of the black racial groups of Africa (except those of Hispanic origin).

Asian: A person having origins in any of the original peoples of the Far East, Southeast Asia, the Indian Subcontinent, or Pacific Islands. This includes people from China, Japan, Korea, the Philippine Islands, American Samoa, India, and Vietnam.

Associate degree: An award that normally requires at least two but less than four years of full-time equivalent college work.

Bachelor's degree: An award (baccalaureate or equivalent degree, as determined by the Secretary of the U.S. Department of Education) that normally requires at least four years but not more than five years of full-time equivalent college-level work.

Caucasian: A person having origins in any of the original peoples of Europe, North Africa, or the Middle East (except those of Hispanic origin).

Contact hour: A unit of measure that represents an hour of scheduled instruction given to students. Also referred to as clock hour.

Credit hour: A unit of measure representing an hour (50 minutes) of instruction over a 15-week period in a semester or a 10-week period in a quarter system. It is applied toward the total number of hours needed for completing the requirements of a degree, diploma, certificate, or other formal award.

Degree: An award conferred by a college, university, or other postsecondary education institution as official recognition for the successful completion of a program of studies.

Doctoral degree: The highest award a student can earn for graduate study.

Dual credit: A program through which high school students may enroll in college courses while still enrolled in high school. Students are not required to apply for admission to the college in order to participate.

Ethnicity: Category used to describe groups to which individuals belong, identify with, or belong in the eyes of the community. A person may be counted in only one group.

First-time student: A student attending any institution for the first time at the level enrolled. Includes students enrolled in the fall term who attended a postsecondary institution for the first time at the same level in the prior summer term. Also includes students who entered with advanced standing (college credit earned before graduation from high school).

Full-time equivalent enrollment: A unit of measure utilized to determine the number of full-time equivalent students during a semester. It is calculated by dividing the sum of student credit hours (SCH) by 12 to obtain the full-time equivalents.

Full-time student: A student enrolled for 12 or more semester credits, 12 or more quarter credits, or 24 or more contact hours a week each term.

Hispanic: A person of Mexican, Puerto Rican, Cuban, Central or South American, or other Spanish culture or origin, regardless of race.

In-district: Those students who live in the Paris Junior College taxing district.

Master's degree: An award that requires the successful completion of a program of study of at least the full-time equivalent of one but not more than two academic years of work beyond the bachelor's degree.

Native American: A person having origins in any of the original peoples of North America and who maintains cultural identification through tribal affiliation or community recognition.

Glossary of Terms, continued

Online: A method of learning whereby some of the learning takes place via the Web or similar electronic means (such as Intranet).

Out-of-district: Those students who do not live in the Paris Junior College taxing district.

Out-of-state: Those students who do not meet the institution's or state's residency requirements.

Part-time student: A student enrolled for fewer than 12 credits per semester or quarter, or fewer than 24 contact hours a week each term.

Quarter: A calendar system in which the academic year consists of four sessions called quarters of about 12 weeks each. The range may be from 10 to 15 weeks. Typically used with continuing education courses.

Remedial services: Instructional courses designed for students deficient in the general competencies necessary for regular post-secondary curriculum and educational setting.

Semester: A calendar system that consists of two semesters during the academic year with about 16 weeks for each semester of instruction. There may be additional summer sessions.

Tuition: Amount of money charged to students for instructional services. Tuition may be charged per term, per course, or per credit.

VCT: Virtual College of Texas is a collaborative of Texas' fifty community college districts and the Texas State Technical College System. Through VCT, students may register at their local colleges to take credit and non-credit distance learning courses from other colleges throughout Texas.