

Paris Junior College

Fact Book

Spring 2011



FACT BOOK

Spring 2011

**Paris Junior College
2400 Clarksville Street
Paris, TX 75460
(903)785-7661**

Phone: (903)782-0340 **Office of Institutional Research**
Fax: (903)782-0288 [E-mail: jhammack@parisjc.edu](mailto:jhammack@parisjc.edu)

**Paris Junior College does not discriminate on the basis of race, color, national origin,
gender, religion, age or disability in employment or the provision of services.**

Table of Contents

Message from the President	1
Mission	2
Student Data	
Unduplicated Headcount Enrollment	5
Headcount by Ethnicity (ten year trend graph)	6
Headcount by Ethnicity (2008 percentage of total graph).....	6
Headcount by Gender	7
Headcount by Age	8
Headcount by Campus	9
Headcount by Geographical Designation	10
Headcount by Majors	11
Headcount by Intent in School	12
Headcount by Dual Credit, Online, Hybrid, and VCT Courses	13
Headcount by Semester	14
Contact Hours	15
Contact Hours by Semester	16
Contact Hours by Instructional Area-General Academic/Fall	17
Contact Hours by Instructional Area-General Academic/Spring	18
Contact Hours by Instructional Area-General Academic/Summer I	19
Contact Hours by Instructional Area-General Academic/Summer II	20

Table of Contents, continued

Student Data, continued

Contact Hours by Instructional Area-Technical/Fall	21
Contact Hours by Instructional Area-Technical/Spring	22
Contact Hours by Instructional Area-Technical/Summer I	23
Contact Hours by Instructional Area-Technical/Summer II	24
Contact Hours by Instructional Area-Continuing Education/Quarter 1	25
Contact Hours by Instructional Area-Continuing Education/Quarter 2	26
Contact Hours by Instructional Area-Continuing Education/Quarter 3	27
Contact Hours by Instructional Area-Continuing Education/Quarter 4	28
Credit Hours by Semester	29
Full-time Equivalent Enrollment by Semester.....	30
Special Populations Headcount.....	31
Remedial First-Time Students	32
Service Area Graduates Enrolled in Higher Education	33
PJC Transfers to Universities	37
PJC Transfers to Community Colleges	41
Graduates and Core Completers	45

Table of Contents, continued

Employee Data

Faculty by Ethnicity	47
Faculty by Highest Degree Earned	48
Faculty by Gender	49
Administrative, Professional, and Support Staff by Ethnicity	50

Financial Data

Revenue by Source	52
Operating Expenditures by Functional Category	53
Tuition and Fees Revenue	54
Per Hour Tuition Costs	55
Property Tax Collections	56
Property Tax Rates Assessed	57
Net Assessed Valuation	58

Glossary of Terms	59
--------------------------------	----

Message from the President

Paris Junior College is a growing and thriving institution. After 87 years of offering a quality education, PJC remains dedicated to providing opportunity to those who seek it.

This Fact Book presents data that reflects the dynamic aspects of the institution along with the unique characteristics which make PJC what it is today. The data will show the dramatic growth experienced over the past several years and how the college has remained a viable institution of higher learning.

This Fact Book will provide quantitative data to describe PJC. As it has been for the past 87 years, the story behind the data and the success PJC has achieved is rooted in the faculty and staff that are dedicated to furthering the mission of this great institution.

Pamela D. Anglin, Ed.D.
President
Paris Junior College



Mission

Paris Junior College is a dynamic, comprehensive community college advancing the education of students while strengthening the economic, social and cultural life of our diverse community.

TEXAS EDUCATION CODE 130.003

The purpose of each public community college shall be to provide:

1. Technical programs up to two years in length leading to associate degrees or certificates;
2. Vocational programs leading directly to employment in semi-skilled and skilled occupations;
3. Freshman and sophomore courses in arts and sciences;
4. Continuing adult education programs for occupational or cultural upgrading;
5. Compensatory education programs designed to fulfill the commitment of an admissions policy allowing the enrollment of disadvantaged students;
6. A continuing program of counseling and guidance designed to assist students in achieving their individual educational goals;
7. Work force development programs designed to meet local and statewide needs;
8. Adult literacy and other basic skills programs for adults;
9. Such other purposes as may be prescribed by the Texas Higher Education Coordinating Board or local governing boards in the best interest of post-secondary education in Texas.

2010-2015 Strategic Goals

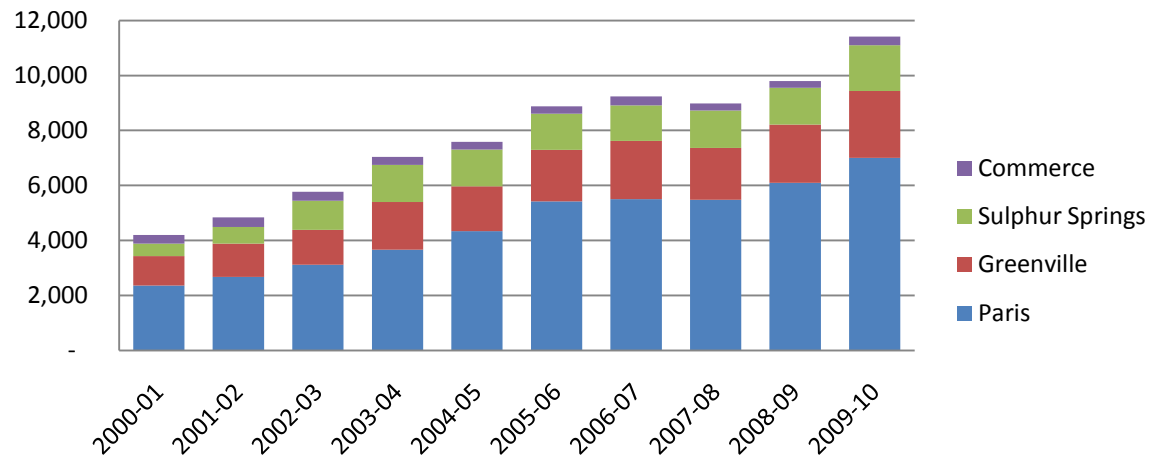
1. Increase enrollment and retention of students to reflect the diversity of the service area.
2. Promote student success through expanded student services.
3. Hire, retain, and develop successful employees as a key to a positive impact on our students and communities.
4. Provide excellence in academics, college preparation, workforce training, continuing education, and adult basic education to assure student success.
5. Provide cultural and personal enrichment to the college and the community.
6. Provide and maintain physical facilities which are technologically current, aesthetically pleasing, and conducive to learning, living, and working in a higher education environment.
7. Manage allocated financial resources effectively and efficiently, and pursue opportunities to provide additional resources supporting the institution with accountability to the taxpayers and benefactors.

Student Data

Unduplicated Headcount Enrollment by Campus

Year	Campus				Total
	Paris	Greenville	Sulphur Springs	Commerce	
2000-01	2,362	1,065	456	320	4,203
2001-02	2,678	1,209	599	348	4,834
2002-03	3,112	1,275	1,055	327	5,769
2003-04	3,659	1,743	1,342	290	7,034
2004-05	4,334	1,634	1,335	288	7,591
2005-06	5,423	1,866	1,324	261	8,874
2006-07	5,498	2,123	1,294	327	9,242
2007-08	5,480	1,879	1,364	263	8,986
2008-09	6,096	2,123	1,331	247	9,797
2009-10	7,002	2,430	1,664	321	11,417

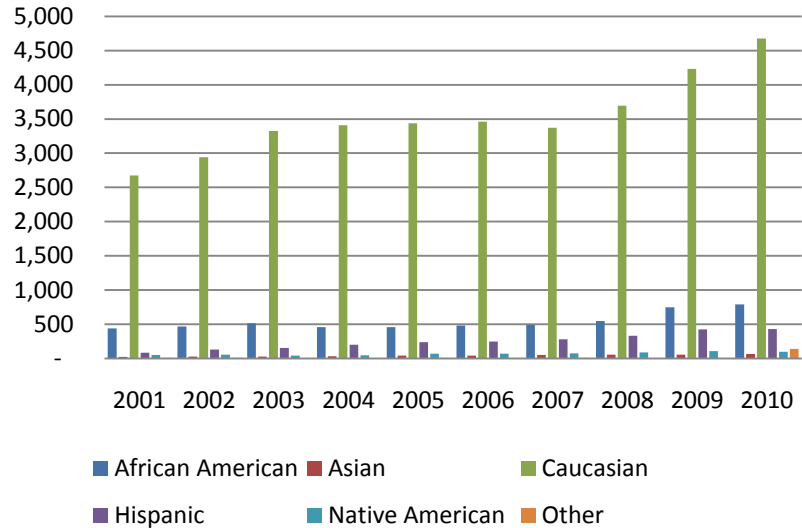
Unduplicate Headcount Enrollment by Campus



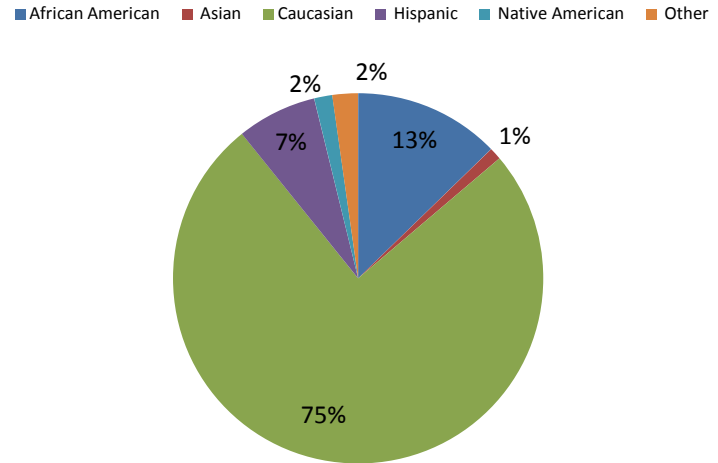
Headcount by Ethnicity Fall Semesters Only

Ethnicity	2001	2002	2003	2004	2005	2006	2007	2008	2009	2010
African American	439	466	515	461	461	483	493	550	750	789
Asian	22	31	28	33	43	42	52	58	59	66
Caucasian	2,674	2,943	3,327	3,408	3,439	3,458	3,373	3,695	4,233	4,674
Hispanic	84	133	156	201	239	250	282	332	424	431
Native American	50	56	42	48	73	69	77	91	108	98
Other	9	10	4	1	9	7	9	7	6	139
Total	3,278	3,639	4,072	4,152	4,264	4,309	4,286	4,733	5,580	6,197

Growth by Ethnicity Fall 2001 to 2010



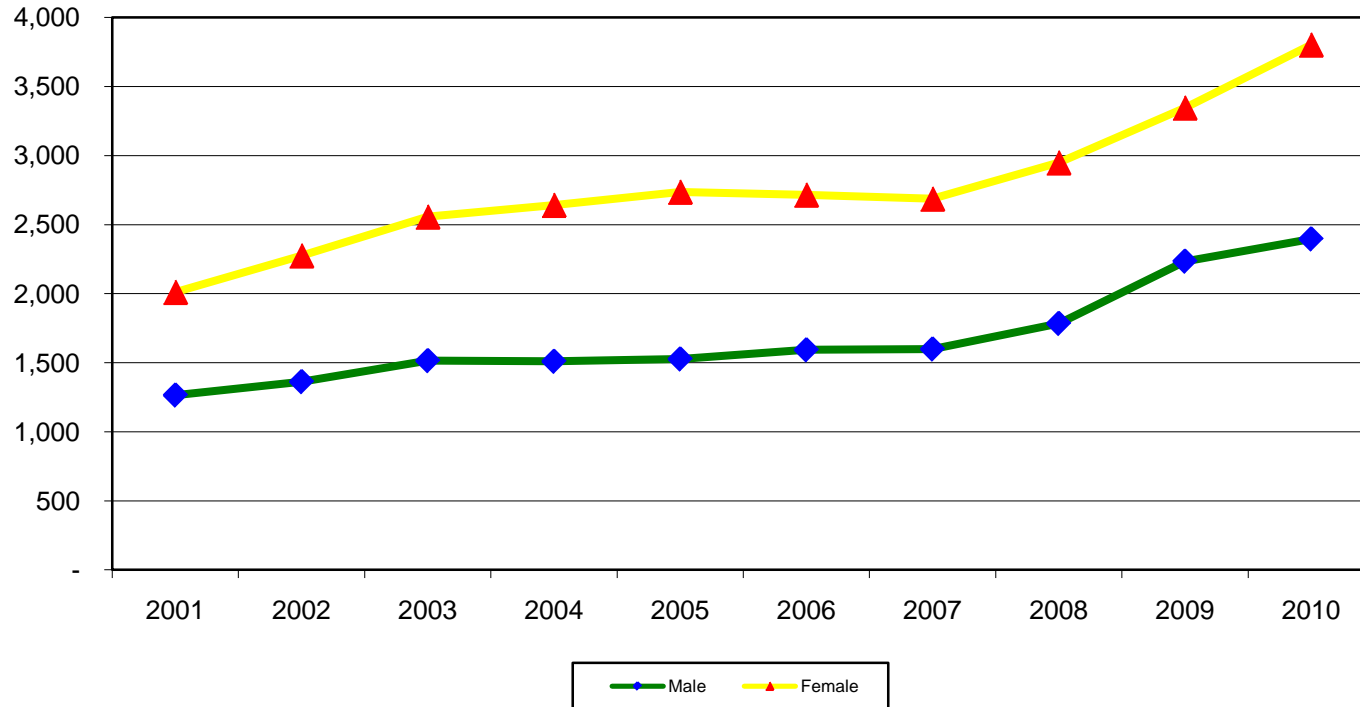
Student Ethnicity Fall 2010



Headcount by Gender Fall Semesters Only

Gender	2001	2002	2003	2004	2005	2006	2007	2008	2009	2010
Male	1,266	1,363	1,515	1,510	1,527	1,593	1,599	1,784	2,234	2,395
Female	2,012	2,276	2,557	2,642	2,737	2,716	2,687	2,949	3,346	3,802
Total	3,278	3,639	4,072	4,152	4,264	4,309	4,286	4,733	5,580	6,197

Gender	2001	2002	2003	2004	2005	2006	2007	2008	2009	2010
Male	39%	37%	37%	36%	36%	37%	37%	38%	40%	39%
Female	61%	63%	63%	64%	64%	63%	63%	62%	60%	61%

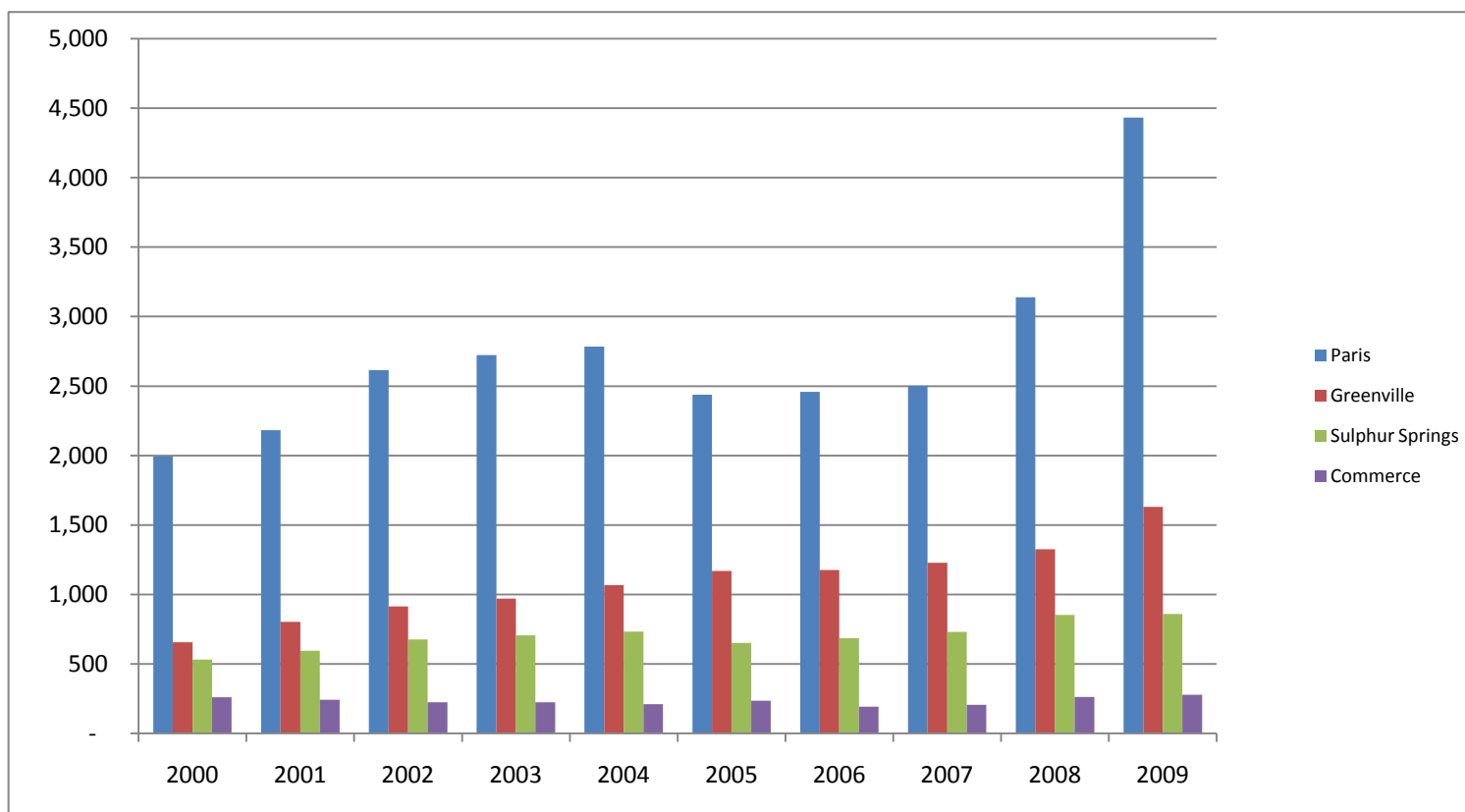


Headcount by Age Fall Semesters Only

Age	2001	2002	2003	2004	2005	2006	2007	2008	2009	2010
Under 17	124	134	192	195	231	245	273	358	441	534
17	381	399	478	538	574	614	556	724	727	786
18	537	581	663	654	654	723	680	704	811	799
19-21	927	1,000	1,053	1,092	1,148	1,060	1,221	1,169	1,346	1,403
22-24	297	357	383	394	401	406	392	462	528	657
25-30	310	338	419	425	419	409	399	494	622	734
31-35	223	282	294	303	270	272	246	257	335	378
36-50	411	463	506	469	491	496	451	474	642	752
51-64	66	82	80	78	74	81	60	84	118	138
65 and over	2	3	4	4	2	3	8	7	10	16
Total	3,278	3,639	4,072	4,152	4,264	4,309	4,286	4,733	5,580	6,197
Average	24.3	24.6	24.2	24.1	23.9	24.0	24.0	23.0	24.1	24.0

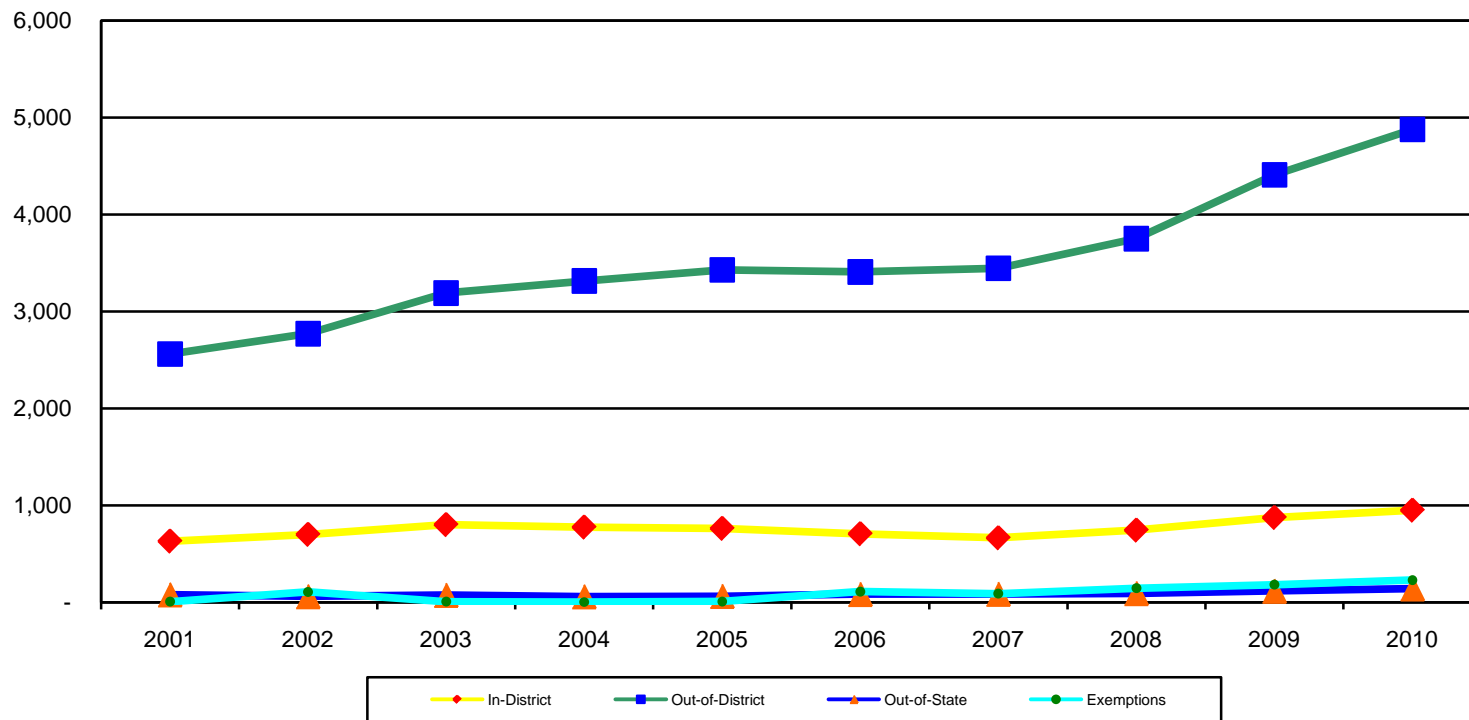
Unduplicated Headcount by Campus Fall Semesters Only

Campus	2001	2002	2003	2004	2005	2006	2007	2008	2009	2010
Paris	1,993	2,182	2,615	2,724	2,785	2,439	2,458	2,502	3,138	4,433
Greenville	657	804	914	971	1,069	1,169	1,177	1,229	1,326	1,630
Sulphur Springs	532	596	676	706	734	651	685	730	853	859
Commerce	261	242	225	224	211	236	192	206	263	279



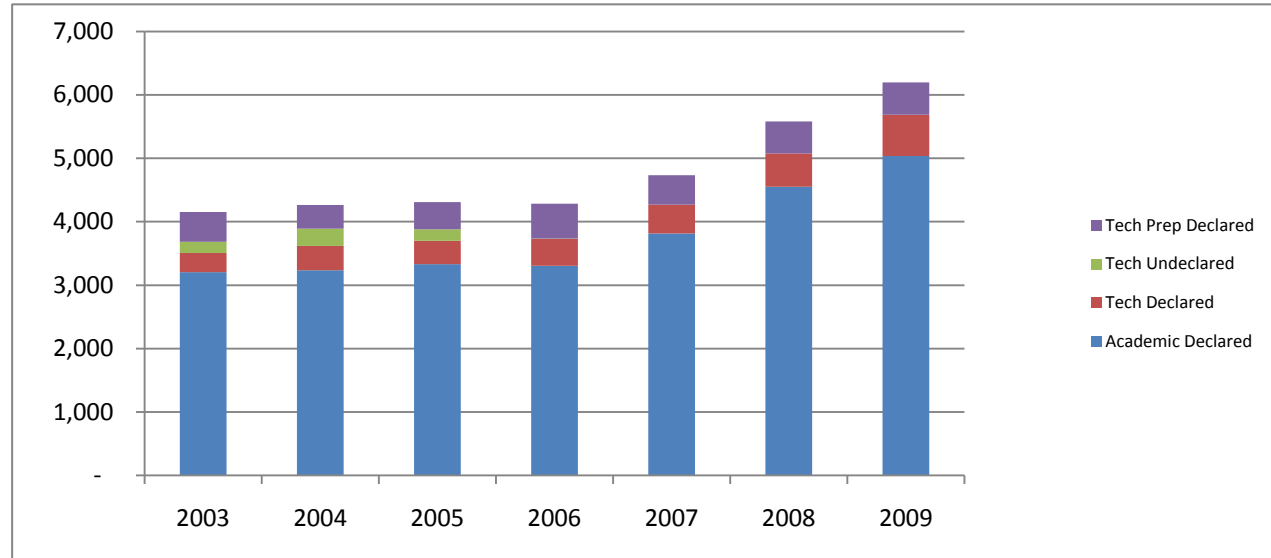
Headcount by Geographical Designation Fall Semesters Only

	2001	2002	2003	2004	2005	2006	2007	2008	2009	2010
In-District	631	700	801	775	762	707	665	744	874	949
Out-of-District	2,560	2,770	3,189	3,314	3,429	3,407	3,445	3,750	4,407	4,877
Out-of-State	80	61	75	60	64	84	86	93	117	141
Exemptions	7	108	7	3	9	111	90	146	182	230
Total	3,278	3,639	4,072	4,152	4,264	4,309	4,286	4,733	5,580	6,197



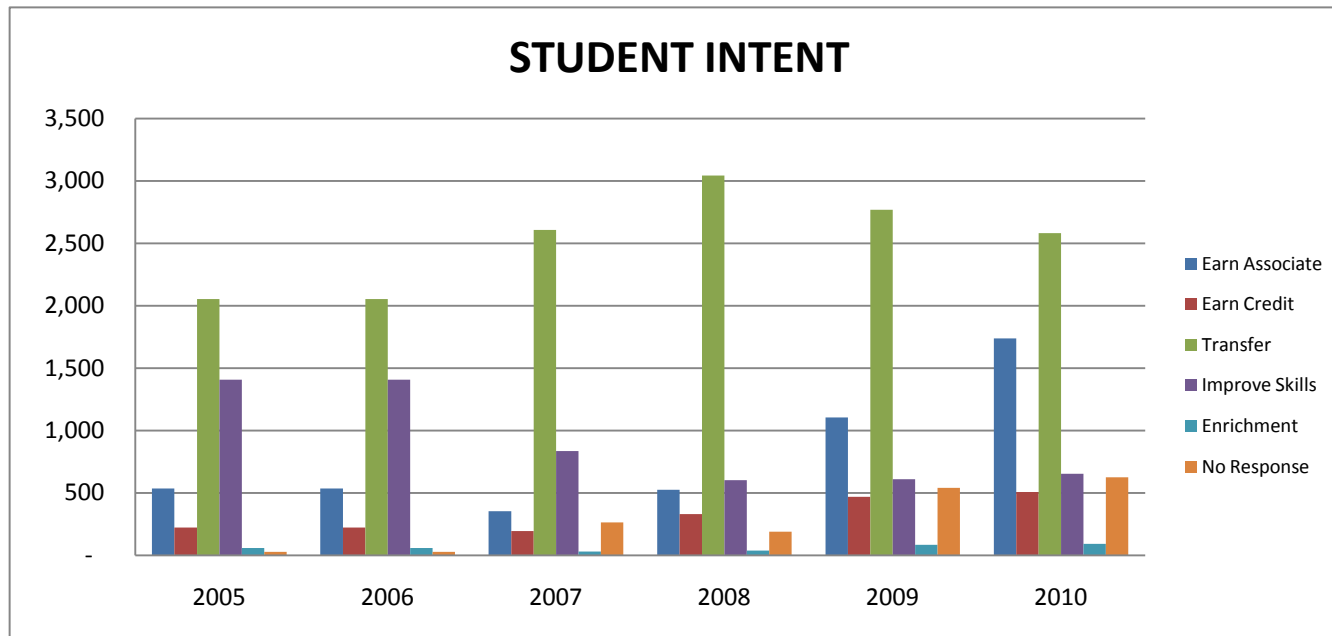
Headcount by Majors Fall Semesters Only

Major	2004	2005	2006	2007	2008	2009	2010
Academic Declared	3,205	3,236	3,329	3,307	3,814	4,553	5,035
Tech Declared	301	382	371	423	456	524	652
Tech Undeclared	179	273	181	5	-	-	-
Tech Prep Declared	467	373	428	551	463	503	510
Total	4,152	4,264	4,309	4,286	4,733	5,580	6,197



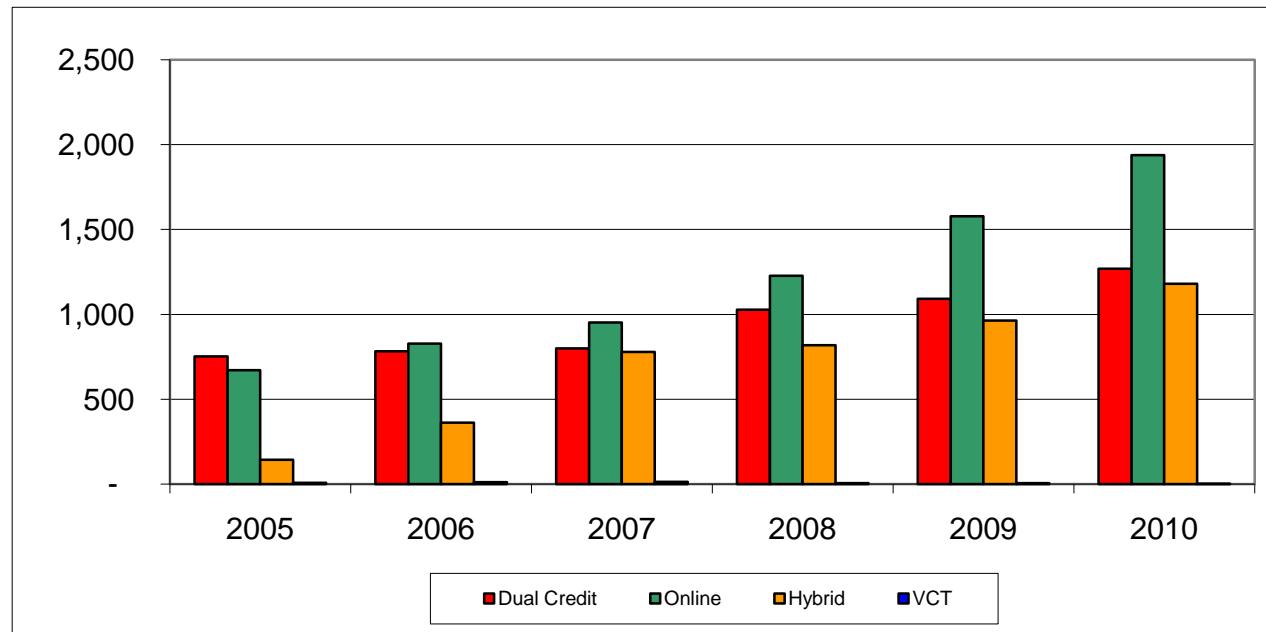
Headcount by Intent In School Fall Semesters Only

Intent	2005	2006	2007	2008	2009	2010
Earn Associate	537	537	353	526	1,106	1,737
Earn Credit	224	224	195	331	469	508
Transfer	2,054	2,054	2,606	3,044	2,768	2,581
Improve Skills	1,408	1,408	835	602	611	653
Enrichment	58	58	32	39	85	93
No Response	28	28	265	191	541	625
Total	4,309	4,309	4,286	4,733	5,580	6,197



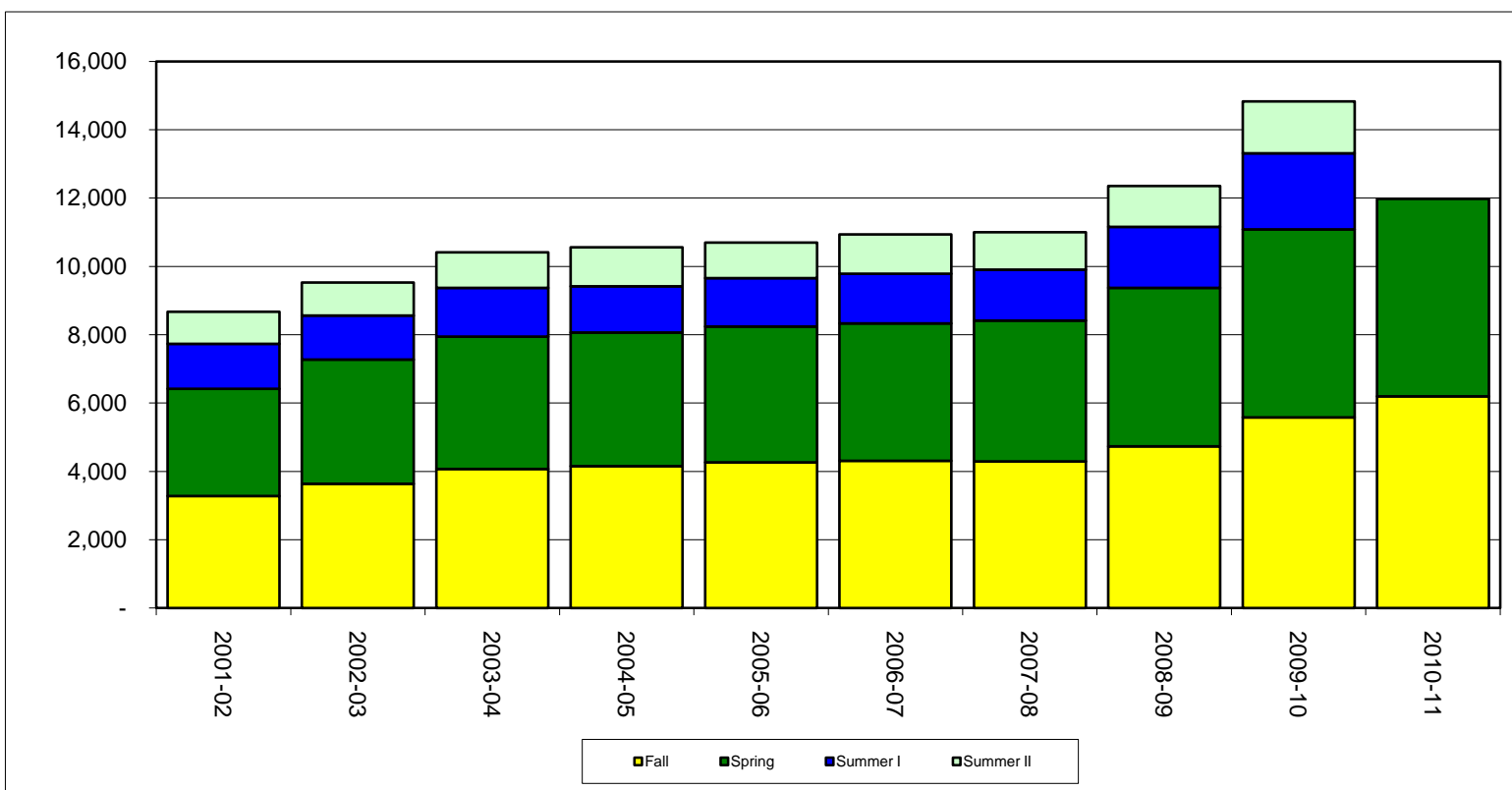
HEADCOUNT FOR DUAL CREDIT, ONLINE, HYBRID, AND VCT COURSES Fall Semesters Only

Enrollment	2005	2006	2007	2008	2009	2010
Dual Credit	752	782	800	1,027	1,092	1,268
Online	671	827	953	1,227	1,577	1,938
Hybrid	144	362	779	819	963	1,180
VCT	9	12	13	7	7	3
Total	1,576	1,983	2,545	3,080	3,639	4,389



Headcount by Semester

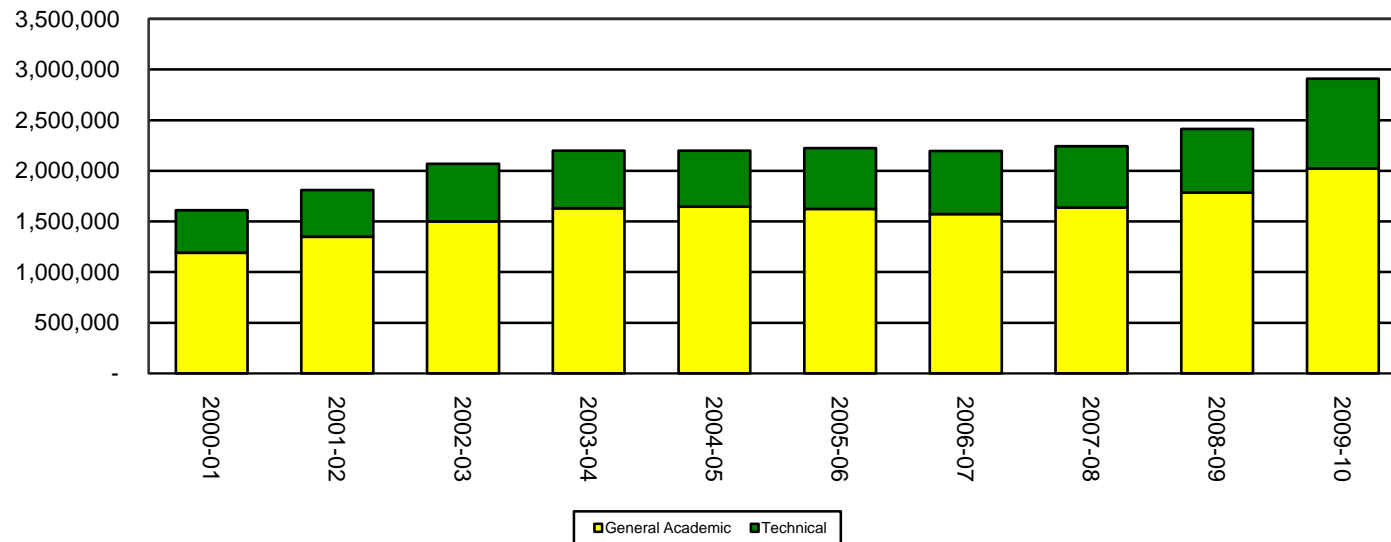
Semester	2001-02	2002-03	2003-04	2004-05	2005-06	2006-07	2007-08	2008-09	2009-10	2010-11
Fall	3,278	3,639	4,072	4,152	4,264	4,308	4,286	4,733	5,580	6,197
Spring	3,139	3,629	3,871	3,914	3,971	4,018	4,127	4,636	5,499	5,778
Summer I	1,316	1,293	1,430	1,350	1,420	1,461	1,493	1,782	2,227	n/a
Summer II	939	967	1,040	1,137	1,042	1,143	1,089	1,199	1,520	n/a
Total	8,672	9,528	10,413	10,553	10,697	10,930	10,995	12,350	14,826	11,975



Contact Hours

Fiscal Year	General Academic	Technical	Total
2000-01	1,190,699	419,706	1,610,405
2001-02	1,349,832	459,775	1,809,607
2002-03	1,498,782	570,895	2,069,677
2003-04	1,628,619	568,494	2,197,113
2004-05	1,646,045	553,502	2,199,547
2005-06	1,621,808	601,693	2,223,501
2006-07	1,571,376	624,294	2,195,670
2007-08	1,637,184	605,767	2,242,951
2008-09	1,784,192	629,081	2,413,273
2009-10	2,020,512	888,604	2,909,116

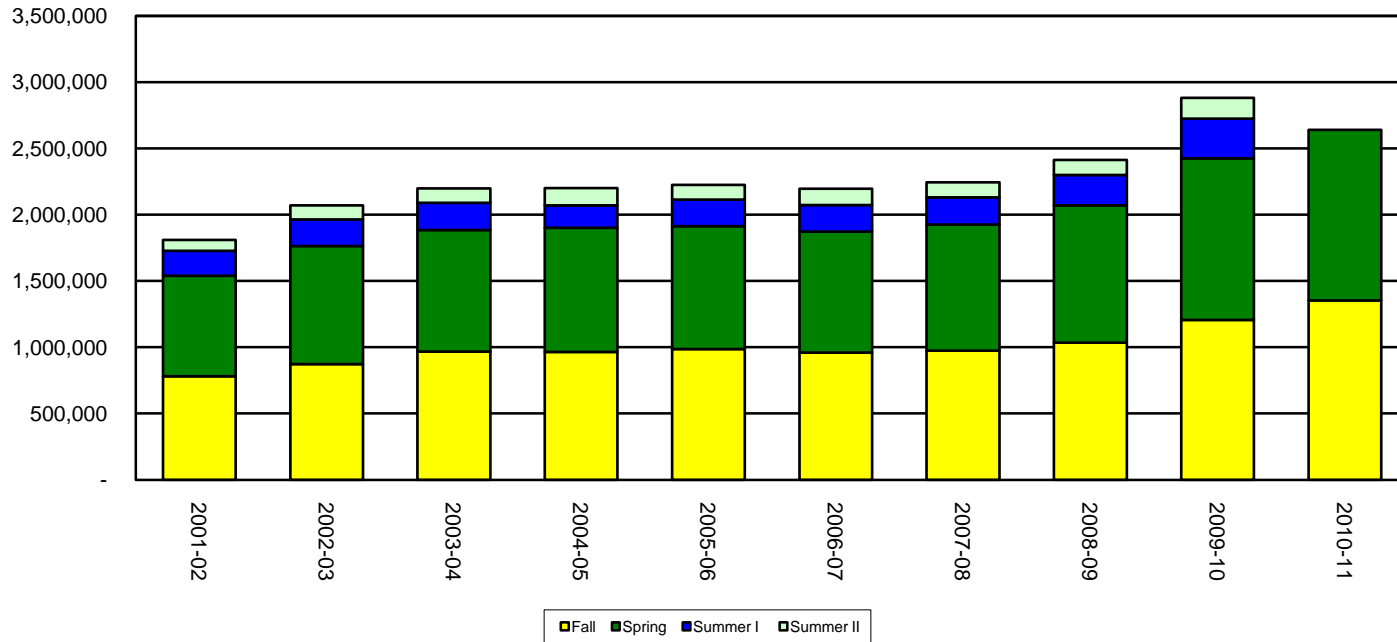
Contact Hours



Contact Hours by Semester General Academic and Technical

Semester	2001-02	2002-03	2003-04	2004-05	2005-06	2006-07	2007-08	2008-09	2009-10	2010-11
Fall	781,232	873,292	967,664	963,541	985,184	959,360	975,168	1,035,392	1,204,720	1,353,664
Spring	758,039	889,113	916,393	937,992	927,313	913,006	949,157	1,034,349	1,219,230	1,285,022
Summer I	189,120	202,430	205,040	167,872	200,576	201,232	205,296	229,920	300,050	n/a
Summer II	81,216	104,842	108,016	130,142	110,428	122,072	113,330	113,612	156,430	n/a
Total	1,809,607	2,069,677	2,197,113	2,199,547	2,223,501	2,195,670	2,242,951	2,413,273	2,880,430	2,638,686

Contact Hours by Semester



**Contact Hours by Instructional Area - General Academic
Fall Semesters Only**

Instructional Area:	2006	2007	2008	2009	2010
Agriculture	2,784	2,080	2,896	2,880	3,664
Biological Sciences	98,176	107,568	109,584	135,808	163,264
Business and Management	11,136	5,696	5,440	6,400	6,208
Communications	2,240	1,728	3,648	5,248	5,744
Computer and Information Sciences	22,368	23,520	26,880	35,664	38,400
Kinesiology	34,080	35,872	35,872	45,552	49,514
Teacher Education	4,192	7,568	7,600	7,808	6,880
Art	13,872	12,336	15,072	16,752	18,384
Drama	12,560	11,920	11,600	13,152	18,656
Music	17,552	17,824	19,376	22,800	14,176
Foreign Language	16,128	17,072	20,624	19,696	20,592
English	84,688	83,056	100,464	107,536	115,715
Speech	19,616	19,920	18,672	20,112	23,280
Learning Skills English	28,960	33,680	33,296	21,776	20,704
Developmental English	19,872	20,208	20,496	38,928	42,432
Math	36,144	35,280	40,608	44,832	52,704
Learning Skills Math	85,088	87,008	87,504	45,392	47,856
Developmental Math	39,024	37,152	38,592	48,576	51,792
Chemistry	8,448	6,448	12,096	8,912	5,264
Physics	7,056	7,168	8,032	15,408	18,544
Geology	7,952	7,392	10,368	8,352	9,312
Student Success Seminar	-	-	-	14,000	17,248
Psychology	24,336	24,864	28,032	31,248	32,640
Economics	10,464	11,184	13,200	14,064	13,584
History	39,744	46,560	47,376	60,240	65,712
Government	34,608	33,552	41,376	45,312	51,840
Sociology	11,616	13,824	14,736	20,160	21,264
Humanities	48	336	-	-	-

**Contact Hours by Instructional Area - General Academic
Spring Semesters Only**

Instructional Area:	2007	2008	2009	2010	2011
Agriculture	3,232	2,224	2,480	3,088	3,376
Biological Sciences	91,852	102,400	111,904	143,152	155,856
Business and Management	8,160	4,224	4,960	5,760	4,864
Communications	2,176	3,168	4,592	4,848	3,552
Computer and Information Sciences	23,328	29,616	26,736	35,616	37,728
Kinesiology	32,304	39,866	39,248	51,056	56,384
Teacher Education	5,536	5,240	10,128	9,604	5,616
Art	11,904	12,960	16,560	19,728	16,896
Drama	12,880	11,504	9,248	14,256	15,792
Music	18,720	19,008	20,112	23,072	13,936
Foreign Language	17,776	18,016	21,834	23,024	20,544
English	79,872	83,552	94,976	104,960	110,544
Speech	19,344	17,904	17,472	18,864	20,016
Learning Skills English	23,264	25,792	29,536	15,888	15,024
Developmental English	13,056	12,288	14,304	27,840	30,528
Math	31,296	32,208	37,968	44,592	51,936
Learning Skills Math	69,008	75,472	77,280	33,680	36,336
Developmental Math	33,552	33,600	36,336	48,912	50,400
Chemistry	5,968	6,560	8,752	5,552	4,896
Physics	5,264	5,600	8,208	14,624	16,192
Geology	10,080	7,392	8,064	6,624	8,928
Learning Frameworks	-	-	-	7,528	14,960
Psychology	22,512	23,808	25,152	30,480	32,688
Economics	12,288	12,144	15,696	16,848	15,120
History	39,168	49,240	49,872	61,200	63,072
Government	30,528	31,920	40,224	43,296	43,440
Sociology	11,616	11,865	14,640	17,856	18,432
Humanities	48	-	-	-	-

**Contact Hours by Instructional Area - General Academic
Summer I Semesters Only**

Instructional Area:	2006	2007	2008	2009	2010
Agriculture	-	-	-	-	-
Biological Sciences	18,656	19,872	25,200	27,760	13,520
Business and Management	576	-	128	160	-
Communications	-	-	48	1,200	1,104
Computer and Information Sciences	3,264	2,688	2,304	3,360	6,432
Kinesiology	7,152	8,448	9,072	8,352	13,360
Education	-	160	-	1,008	-
Art	2,160	1,680	2,400	2,112	3,552
Drama	2,304	2,784	1,440	2,208	4,734
Music	2,640	1,488	1,824	1,904	3,072
Foreign Language	3,584	2,880	3,632	-	3,440
English	11,216	9,680	11,504	12,880	14,640
Speech	4,896	4,320	4,512	6,192	3,328
Learning Skills English	11,072	4,356	4,032	3,280	3,968
Developmental English	3,360	2,304	1,248	2,976	5,664
Math	8,352	7,584	6,528	8,640	9,120
Learning Skills Math	13,376	21,312	19,024	6,576	10,016
Developmental Math	5,376	7,296	7,728	6,816	9,600
Chemistry	-	3,136	1,904	2,032	1,904
Physics	560	1,008	560	2,688	2,688
Geology	3,584	2,304	2,974	2,400	2,880
Advising Seminar	-	-	-	-	-
Psychology	3,744	2,208	4,320	5,376	2,832
Economics	2,784	3,024	2,928	3,600	3,696
History	6,672	3,912	7,680	7,488	9,216
Government	5,952	7,104	6,432	9,696	11,712
Sociology	3,508	2,592	1,872	2,400	4,368
Humanities	-	-	-	-	-
VCT	176	48	48	48	-

**Contact Hours by Instructional Area - General Academic
Summer II Semesters Only**

Instructional Area:	2006	2007	2008	2009	2010
Agriculture	-	-	-	-	-
Biological Sciences	11,568	17,200	12,864	15,248	30,208
Business and Management	-	-	-	-	1,248
Communications	-	-	-	-	-
Computer and Information Sciences	1,056	1,344	4,704	3,072	4,224
Kinesiology	6,480	7,824	7,200	7,424	10,432
Education	-	-	-	-	-
Art	1,680	1,824	2,122	1,392	2,112
Drama	2,688	2,592	2,304	3,648	3,168
Music	1,344	1,488	2,016	2,464	1,296
Foreign Language	2,064	1,072	2,400	80	2,176
English	6,560	6,512	8,048	10,688	10,032
Speech	3,744	3,456	3,166	3,984	5,136
Learning Skills English	6,928	2,416	2,016	1,552	2,032
Developmental English	1,680	1,296	1,248	2,064	2,400
Math	5,616	5,616	6,528	6,144	5,472
Learning Skills Math	9,808	15,760	12,944	4,000	5,440
Developmental Math	4,320	6,048	4,176	6,288	8,160
Chemistry	2,800	1,216	1,566	1,680	1,120
Physics	448	672	-	1,632	1,248
Geology	2,352	2,112	1,824	2,112	2,112
Advising Seminar	-	-	-	-	-
Psychology	3,456	4,848	1,152	2,880	7,392
Economics	1,344	2,160	2,112	2,736	2,640
History	5,568	4,080	4,368	6,096	8,544
Government	5,424	7,392	8,352	7,056	9,744
Sociology	1,296	1,248	2,016	2,208	3,600
Humanities	-	-	-	-	-
Criminology	48	-	-	-	-

**Contact Hours by Instructional Area - Technical
Fall Semesters Only**

Instructional Area:	2006	2007	2008	2009	2010
General Business	34,848	26,336	26,336	28,053	41,200
Data Processing	21,440	16,928	13,568	16,288	23,328
Welding	9,072	10,432	23,696	26,368	26,032
Air Conditioning	31,600	27,680	26,880	61,760	86,752
Vocational Nursing	25,056	25,448	27,648	25,488	29,808
A.D. Nursing	23,520	20,832	18,144	22,512	21,540
Other Health	10,672	12,592	11,616	19,856	21,245
Radiology	13,952	7,072	13,152	12,560	17,168
Drafting	4,512	9,888	5,760	6,912	5,856
Electronics/Electro Mechanical	16,816	14,240	14,664	19,592	27,936
Horology	11,088	6,768	8,064	8,640	12,960
Jewelry	46,944	53,088	56,736	45,504	52,320
Gemology	4,608	5,760	-	2,880	3,600
Cosmetology	10,864	13,488	11,392	12,096	11,376
Criminal Justice	6,112	11,280	12,960	23,648	21,424
EMT	-	-	4,992	18,880	22,208

**Contact Hours by Instructional Area - Technical
Spring Semesters Only**

Instructional Area:	2007	2008	2009	2010	2011
General Business	30,512	29,680	28,624	38,384	35,776
Data Processing	20,624	16,032	17,856	20,896	28,880
Welding	8,080	12,416	16,384	29,472	30,240
Air Conditioning	22,720	20,560	24,320	69,600	83,600
Vocational Nursing	27,486	29,013	33,085	27,486	35,630
A.D. Nursing	22,176	21,504	17,808	19,312	24,016
Other Health	13,072	14,448	13,904	23,184	20,160
Radiology	17,136	16,752	18,144	19,312	16,336
EMT	-	-	8,224	19,584	23,136
Drafting	6,816	7,968	4,256	7,424	5,376
Electronics/Electro-Mechanical	16,944	12,528	18,852	20,880	24,064
Horology	4,032	8,352	2,760	10,512	10,080
Jewelry	52,368	49,632	38,784	39,456	47,952
Gemology	7,488	4,608	6,912	5,904	6,480
Cosmetology	14,608	9,376	10,672	10,384	9,104
Criminal Justice	6,112	11,280	23,088	23,024	23,580

**Contact Hours by Instructional Area - Technical
Summer I Semesters Only**

Instructional Area:	2006	2007	2008	2009	2010
General Business	2,784	2,832	1,744	2,304	3,102
Data Processing	3,808	1,984	2,032	1,472	6,464
Welding	7,968	6,544	8,256	20,672	25,120
Air Conditioning	11,040	5,440	9,120	15,840	49,520
Vocational Nursing	9,600	9,440	11,040	9,600	11,040
A.D. Nursing	-	-	-	10,112	8,960
Other Health	3,760	3,728	3,040	5,084	5,126
Radiology	15,792	12,960	12,528	12,320	16,000
Drafting	-	-	-	480	-
Electronics/Electro-Mechanical	288	-	96	-	-
Horology	7,920	4,608	6,336	6,480	9,072
Jewelry	16,128	22,608	22,892	14,784	15,552
Gemology	-	-	-	-	-
Cosmetology	2,384	6,496	1,650	2,688	2,160
Criminal Justice	-	3,454	2,880	1,824	1,680

**Contact Hours by Instructional Area - Technical
Summer II Semesters Only**

Instructional Area:	2006	2007	2008	2009	2010
General Business	96	284	1,242	1,280	1,408
Data Processing	864	896	64	-	-
Welding	-	-	-	-	-
Air Conditioning	-	-	-	-	-
Vocational Nursing	10,556	10,920	12,194	10,556	12,558
A.D. Nursing	8,832	8,832	8,960	-	-
Other Health	1,440	816	2,656	2,752	3,040
EMT					4,864
Radiology	-	-	-	-	-
Drafting	-	-	-	672	576
Electronics/Electro-Mechanical	-	-	-	-	-
Horology	-	-	-	-	-
Jewelry	-	-	-	-	-
Gemology	-	-	-	-	-
Cosmetology	-	-	1,216	2,096	2,032
Criminal Justice	-	1,760	1,632	1,536	2,016

**Contact Hours by Instructional Area - Continuing Education
Quarter 1 Only**

Instructional Area:	2006	2007	2008	2009	2010
Agriculture	-	-	-	-	-
Architecture and Precision Production	288	489	468	940	1,123
Business and Management	589	1,568	1,364	910	1,320
Communications	-	-	-	-	-
Computer and Information Sciences	8,801	2,879	441	691	179
Construction Trades	-	360	24	16	-
Consumer and Homemaking	88	1,362	408	1,284	974
Engineering Related	-	2,513	453	-	208
English Language	-	448	-	-	-
Foreign Languages	1,600	-	712	464	168
Health Occupations	-	112	2,448	-	2,184
Health Occupations, Other	5,094	3,472	4,939	4,855	6,532
Health Occupations, VN	114	-	-	-	-
Mathematics	-	-	-	-	-
Mechanics and Repairers-Automotive	-	5,668	-	-	-
Mechanics and Repairers-Diesel	24	48	1,600	200	-
Mechanics and Repairers-Electronics	-	-	24	-	-
Protective Services	306	-	-	-	-
Psychology and Social Sciences	-	-	-	-	56
Visual and Performing Arts	72	-	1,440	-	-
Total Contact Hours	16,976	18,919	14,321	9,340	12,744

**Contact Hours by Instructional Area - Continuing Education
Quarter 2 Only**

Instructional Area:	2007	2008	2009	2010	2011
Agriculture	-	-	-	-	-
Architecture and Precision Production	-	72	-	-	389
Business and Management	757	572	689	1,557	48
Communications	-	-	-	-	-
Computer and Information Sciences	4,374	656	110	144	177
Construction Trades	474	40	28	24	52
Consumer and Homemaking	1,256	428	1,218	1,380	861
Engineering Related	2,926	63	42	42	96
English Language	-	-	24	-	-
Foreign Languages	-	272	-	-	-
Health Occupations	4,353	-	224	176	-
Health Occupations, Other	-	7,845	2,259	2,839	4,669
Health Occupations, VN	112	368	-	-	-
Mathematics	2,208	-	-	-	-
Mechanics and Repairers-Automotive	-	-	-	-	-
Mechanics and Repairers-Diesel	-	1,000	6,400	80	-
Mechanics and Repairers-Electronics	-	64	-	-	-
Protective Services	-	-	2,416	-	-
Psychology and Social Sciences	-	-	80	-	-
Visual and Performing Arts	-	2,160	-	-	-
Total Contact Hours	16,460	13,540	13,490	6,242	6,292

**Contact Hours by Instructional Area - Continuing Education
Quarter 3 Only**

Instructional Area:	2007	2008	2009	2009	2010
Architecture and Precision Production	792	554	72	826	144
Business and Management	448	6,765	1,948	531	1,460
Career Pilot	-	1,144	-	-	-
Communications	48	-	45	-	-
Computer and Information Sciences	402	1,171	5,318	27	977
Construction Trades	36	152	-	-	-
Consumer and Homemaking	2,176	40	2,261	1,796	-
Engineering Related	42	2,960	-	3,100	136
English Language	608	24	-	-	24
Foreign Languages	400	288	648	-	-
Health Occupations	1,080	7,336	1,296	888	1,913
Health Occupations, Other	6,309	4,792	5,629	5,014	7,568
Health Occupations, VN	-	490	462	560	602
Mathematics	-	-	-	-	-
Mechanics and Repairers-Automotive	-	-	1,900	-	-
Mechanics and Repairers-Diesel	19,240	4,032	-	-	-
Mechanics and Repairers-Electronics	24	-	-	-	-
Protective Services	658	-	-	882	-
Psychology and Social Sciences	-	-	-	72	-
Visual and Performing Arts	-	1,152	-	-	-
Total Contact Hours	32,263	30,900	19,579	13,696	12,824

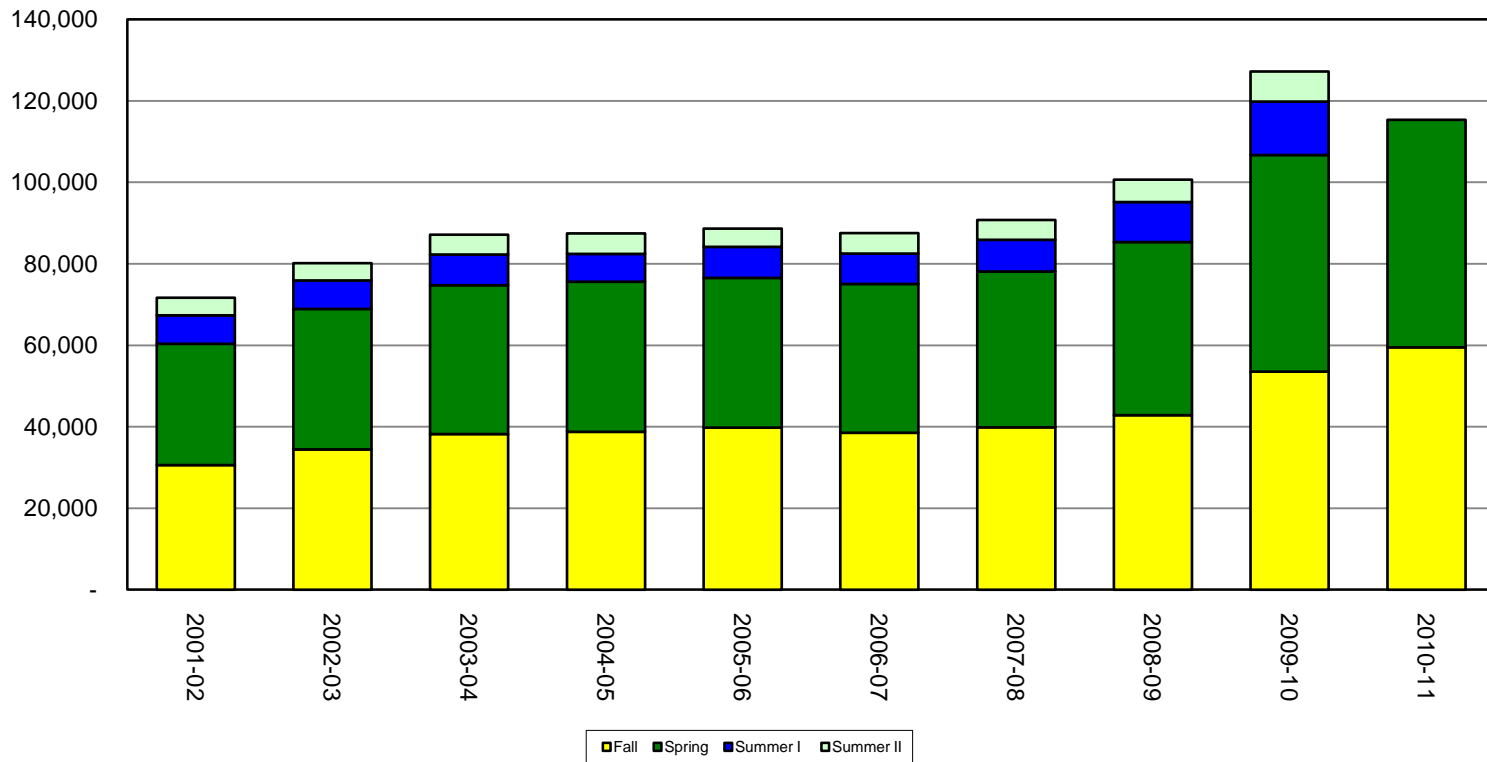
**Contact Hours by Instructional Area - Continuing Education
Quarter 4 Only**

Instructional Area:	2006	2007	2008	2009	2010
Agriculture	-	-	-	80	-
Architecture and Precision Production	-	-	1,320	-	1,040
Business and Management	2,736	4,324	2,739	4,622	3,327
Communications	-	-	-	-	-
Computer and Information Sciences	2,580	2,250	2,420	412	464
Construction Trades	-	728	-	-	208
Consumer and Homemaking	80	1,723	1,185	-	469
Engineering Related	24	5,694	-	1,002	504
English Language	104	-	-	-	-
Foreign Languages	24	-	-	-	-
Health Occupations	2,760	1,500	800	400	1,500
Health Occupations, Other	1,079	6,148	4,960	6,299	6,700
Health Occupations, VN	-	-	-	-	-
Mathematics	-	-	-	-	-
Mechanics and Repairers-Automotive	-	-	-	-	-
Mechanics and Repairers-Diesel	12,052	1,600	1,200	6,400	-
Mechanics and Repairers-Electronics	-	-	-	-	-
Protective Services	-	-	-	-	-
Psychology and Social Sciences	-	-	-	-	-
Visual and Performing Arts	-	-	-	-	-
Total Contact Hours	21,439	23,967	14,624	19,215	14,212

Credit Hours by Semester

Semester	2001-02	2002-03	2003-04	2004-05	2005-06	2006-07	2007-08	2008-09	2009-10	2010-11
Fall	30,575	34,450	38,223	38,742	39,822	38,529	39,883	42,821	53,530	59,488
Spring	29,797	34,460	36,502	36,861	36,714	36,509	38,229	42,547	53,144	55,864
Summer I	6,998	6,990	7,556	6,841	7,591	7,439	7,803	9,773	13,181	n/a
Summer II	4,308	4,261	4,832	5,019	4,545	5,078	4,868	5,539	7,353	n/a
Total	71,678	80,161	87,113	87,463	88,672	87,555	90,783	100,680	127,208	115,352

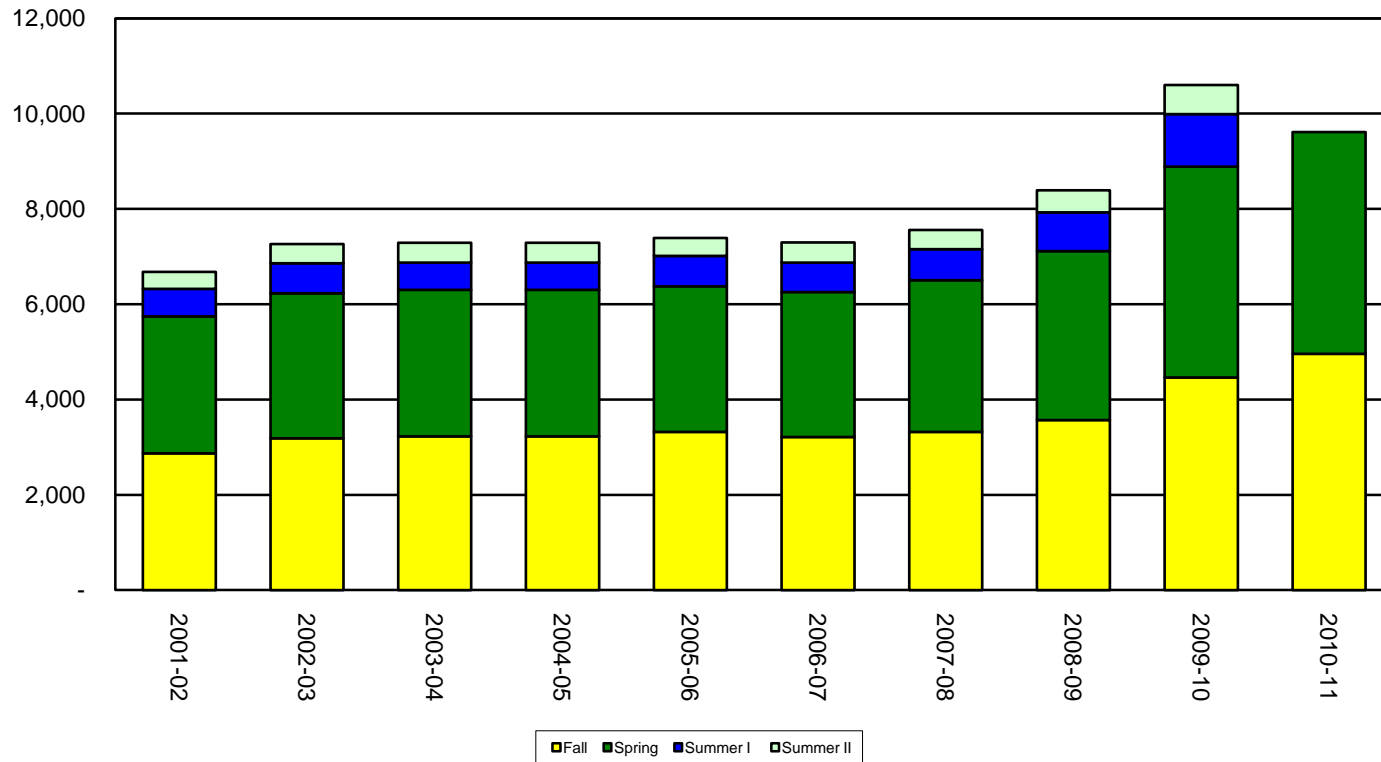
Credit Hours by Semesters



Full-time Equivalent Enrollment by Semester

Semester	2001-02	2002-03	2003-04	2004-05	2005-06	2006-07	2007-08	2008-09	2009-10	2010-11
Fall	2,871	3,185	3,229	3,229	3,319	3,211	3,319	3,569	4,461	4,957
Spring	2,872	3,042	3,072	3,072	3,060	3,043	3,186	3,546	4,429	4,655
Summer I	583	630	570	570	633	620	650	814	1,098	n/a
Summer II	355	403	418	418	379	424	406	462	612	n/a
Total	6,681	7,260	7,289	7,289	7,391	7,298	7,561	8,391	10,600	9,612

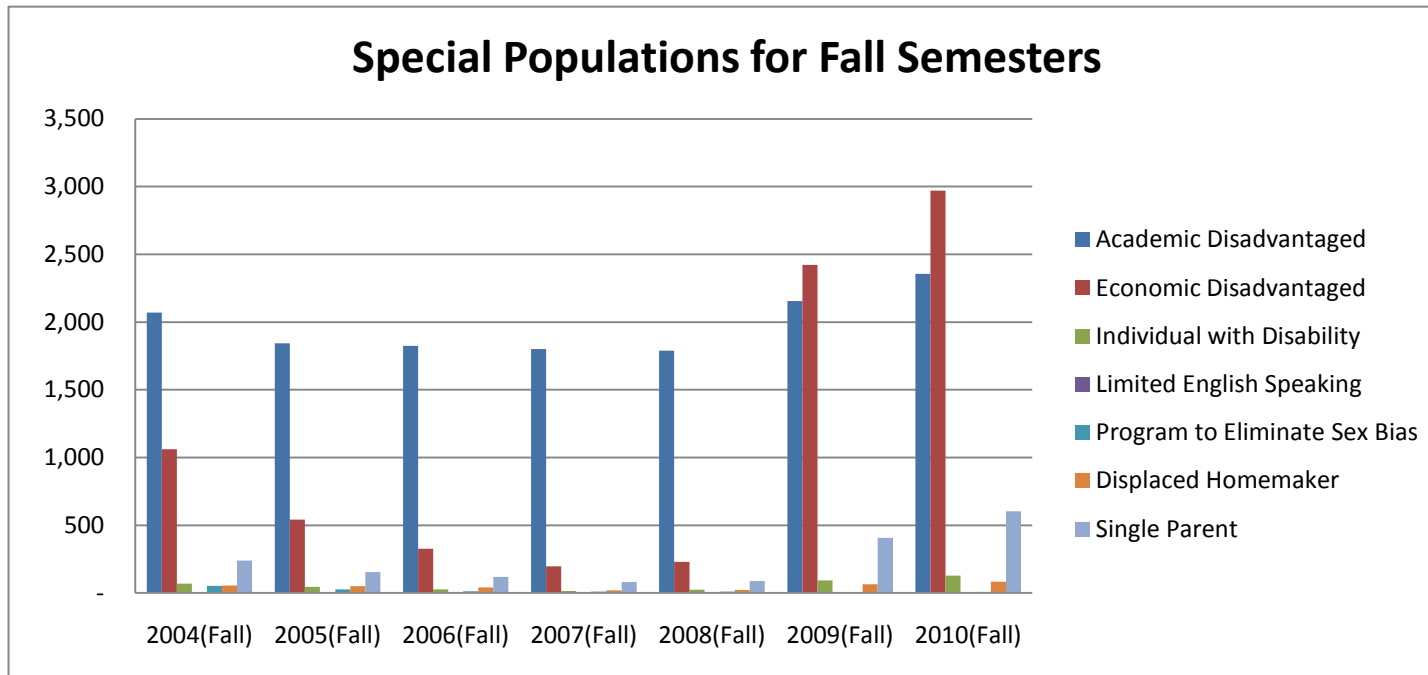
Full-time Equivalent Enrollment by Semester



Special Populations Headcount

	2004(Fall)	2005(Fall)	2006(Fall)	2007(Fall)	2008(Fall)	2009(Fall)	2010(Fall)
Academic Disadvantaged	2,070	1,844	1,824	1,800	1,790	2,155	2,355
Economic Disadvantaged	1,062	541	326	197	231	2,423	2,971
Individual with Disability	70	46	27	16	24	92	128
Limited English Speaking	-	-	-	-	-	-	-
Program to Eliminate Sex Bias	52	26	13	11	10	5	7
Displaced Homemaker	56	50	40	20	23	64	84
Single Parent	239	154	120	82	87	408	603
Total Headcount	3,549	2,661	2,350	2,126	2,165	5,147	6,148

Special Populations for Fall Semesters



Remedial First-Time Students Fall Semesters Only

2010	Female		Male		Total	
	Number	Percent	Number	Percent	Number	Percent
Ethnicity						
Caucasian	292	65.0%	221	62.6%	513	64.0%
African American	77	17.1%	62	17.6%	139	17.3%
Hispanic	28	6.2%	13	3.7%	41	5.1%
Asian	4	0.9%	4	1.1%	8	1.0%
Native American	9	2.0%	11	3.1%	20	2.5%
Other	39	8.7%	42	11.9%	81	10.1%
Total	449	100.0%	353	100.0%	802	100.0%

2009	Female		Male		Total	
	Number	Percent	Number	Percent	Number	Percent
Ethnicity						
Caucasian	268	65.8%	145	64.7%	413	65.5%
African American	101	24.8%	54	24.1%	155	24.6%
Hispanic	26	3.2%	18	8.0%	44	7.0%
Asian	1	0.2%	2	0.9%	3	0.5%
Native American	10	2.5%	5	2.2%	15	2.4%
Other	1	0.2%	-	0.0%	1	0.0%
Total	407	100.0%	224	100.0%	631	100.0%

2008	Female		Male	Male	Total	Total
	Number	Percent	Number	Percent	Number	Percent
Ethnicity						
Caucasian	222	72.5%	127	73.0%	349	72.7%
African American	51	16.7%	31	17.8%	82	17.1%
Hispanic	22	2.7%	10	5.7%	32	6.7%
Asian	3	1.0%	1	0.6%	4	0.8%
Native American	6	2.0%	3	1.7%	9	1.9%
Other	2	0.7%	2	1.1%	4	0.0%
Total	306	100.0%	174	100.0%	480	100.0%

**Service Area Graduates Enrolled in Higher Education
in Fall 2007**

County	District	Total Enrolling in Higher Education		Total Enrolling in Paris Junior College		Total Graduates
		Number	Percent	Number	Percent	
Delta						
	Cooper ISD	27	42.9%	11	17.5%	63
	Total Delta County	27	42.9%	11	17.5%	63
Lamar						
	Chisum ISD	39	72.2%	19	35.2%	54
	North Lamar ISD	93	40.6%	83	36.2%	229
	Paris ISD	104	53.9%	69	35.8%	193
	Prairiland ISD	36	51.4%	25	35.7%	70
	Roxton ISD	-		-		
	Total Lamar County	272	49.8%	196	35.9%	546
Hopkins						
	Cumby ISD	14	45.2%	7	22.6%	31
	Como-Pickton CISD	17	34.7%	7	14.3%	49
	North Hopkins ISD	16	50.0%	9	28.1%	32
	Sulphur Springs ISD	137	52.9%	50	19.3%	259
	Total Hopkins County	184	49.6%	73	19.7%	371
Hunt						
	Bland ISD	14	46.7%	-	NA	30
	Boles ISD	14	34.1%	5	12.2%	41
	Caddo Mills ISD	55	67.9%	14	17.3%	81
	Campbell ISD	12	40.0%	6	20.0%	30
	Celeste ISD	13	39.4%	7	21.2%	33
	Commerce ISD	45	41.7%	9	8.3%	108
	Greenville ISD	152	50.3%	50	16.6%	302
	Lone Oak ISD	23	39.7%	12	20.7%	58
	Quinlan ISD	57	37.3%	22	14.4%	153
	Wolfe City ISD	17	44.7%	-	NA	38
	Total Hunt County	402	46.0%	125	14.3%	874
Red River						
	Avery ISD	-		-		
	Clarksville ISD	18	32.7%	9	16.4%	55
	Detroit ISD	17	54.8%	7	22.6%	31
	Rivercrest ISD	31	57.4%	12	22.2%	54
	Total Red River County	66	47.1%	28	20.0%	140
Grand Total Service Area		951	47.7%	433	21.7%	1,994

**Service Area Graduates Enrolled in Higher Education
in Fall 2008**

County	District	Total Enrolling in Higher Education		Total Enrolling in Paris Junior College		Total Graduates
		Number	Percent	Number	Percent	
Delta	Cooper ISD	20	39.2%	5	9.8%	51
	Total Delta County	20	39.2%	5	9.8%	51
Lamar	Chisum ISD	NOT AVAILABLE				
	North Lamar ISD	121	58.5%	82	39.6%	207
	Paris ISD	107	55.4%	69	35.8%	193
	Prairiland ISD	34	51.5%	21	31.8%	66
	Roxton ISD	-		-		-
	Total Lamar County	262	56.2%	172	36.9%	466
Hopkins	Cumby ISD	-		-		-
	Como-Pickton CISD	28	45.9%	15	24.6%	61
	North Hopkins ISD	15	57.7%	-		26
	Sulphur Springs ISD	115	56.9%	41	20.3%	202
	Total Hopkins County	158	54.7%	56	19.4%	289
Hunt	Bland ISD	14	35.0%	-	NA	40
	Boles ISD	14	36.8%	12	31.6%	38
	Caddo Mills ISD	55	61.8%	20	22.5%	89
	Campbell ISD	-		-		
	Celeste ISD	-		-		
	Commerce ISD	62	52.1%	13	10.9%	119
	Greenville ISD	133	47.2%	46	16.3%	282
	Lone Oak ISD	40	55.6%	16	22.2%	72
	Quinlan ISD	48	28.9%	14	8.4%	166
	Wolfe City ISD	19	50.0%	9	NA	38
	Total Hunt County	385	45.6%	130	15.4%	844
Red River	Avery ISD	-		-		
	Clarksville ISD	29	46.8%	13	21.0%	62
	Detroit ISD	10	30.3%	6	18.2%	33
	Rivercrest ISD	36	56.3%	8	12.5%	64
	Total Red River County	75	47.2%	27	17.0%	159
Grand Total Service Area		900	49.8%	390	21.6%	1,809

Service Area Graduates Enrolled in Higher Education in Fall 2009

County District	Total Enrolling in Higher Education		Total Enrolling in Paris Junior College		Total Graduates
	Number	Percent	Number	Percent	
Delta					
Cooper ISD	34	50.0%	20	29.4%	68
Total Delta County	34	50.0%	20	29.4%	68
Lamar					
Chisum ISD	33	51.6%	22	34.4%	64
North Lamar ISD	121	50.6%	88	36.8%	239
Paris ISD	110	63.6%	76	43.9%	173
Prairiland ISD	42	46.7%	34	37.8%	90
Roxton ISD	-		-		-
Total Lamar County	306	54.1%	220	38.9%	566
Hopkins					
Cumby ISD	-		-		-
Como-Pickton CISD	26	40.6%	9	14.1%	64
North Hopkins ISD	-		-		26
Sulphur Springs ISD	129	51.6%	63	25.2%	250
Total Hopkins County	155	45.6%	72	21.2%	340
Hunt					
Bland ISD	14	40.0%	-	NA	35
Boles ISD	22	62.9%	5	14.3%	35
Caddo Mills ISD	56	67.5%	23	27.7%	83
Campbell ISD	13	50.0%	7	26.9%	26
Celeste ISD	18	360.0%	5	14.7%	34
Commerce ISD	57	56.4%	11	10.9%	101
Greenville ISD	122	46.9%	59	22.7%	260
Lone Oak ISD	40	61.5%	17	26.2%	65
Quinlan ISD	34	25.0%	14	10.3%	136
Wolfe City ISD	16	42.1%	-	NA	38
Total Hunt County	392	48.2%	141	17.3%	813
Red River					
Avery ISD	-		-		
Clarksville ISD	29	48.3%	13	21.7%	60
Detroit ISD	23	67.6%	17	50.0%	34
Rivercrest ISD	33	73.3%	13	28.9%	45
Total Red River County	85	61.2%	27	19.4%	139
Grand Total Service Area	972	50.5%	480	24.9%	1,926

**Service Area Graduates Enrolled in Higher Education
in Fall 2010**

County	District	Total Enrolling in Higher Education		Total Enrolling in Paris Junior College		Total Graduates
		Number	Percent	Number	Percent	
Delta	Cooper ISD	36	65.5%	17	30.9%	55
	Total Delta County	36	65.5%	17	30.9%	55
Lamar	Chisum ISD	43	63.2%	30	44.1%	68
	North Lamar ISD	99	43.0%	69	30.0%	230
	Paris ISD	88	51.2%	44	25.6%	172
	Prairiland ISD	41	53.9%	28	36.8%	76
	Roxton ISD					
	Total Lamar County	271	49.6%	171	31.3%	546
Hopkins	Cumby ISD	16	47.1%	8	23.5%	34
	Como-Pickton CISD	27	56.3%	11	22.9%	48
	North Hopkins ISD	19	52.8%	9	25.0%	36
	Sulphur Springs ISD	118	44.0%	47	17.5%	268
	Total Hopkins County	180	46.6%	75	19.4%	386
Hunt	Bland ISD	14	35.9%	6	15.4%	39
	Boles ISD	30	57.7%	16	30.8%	52
	Caddo Mills ISD	48	56.5%	13	15.3%	85
	Campbell ISD					
	Celeste ISD	29	263.6%	11	26.2%	42
	Commerce ISD	39	42.4%	8	8.7%	92
	Greenville ISD	123	57.2%	55	25.6%	215
	Lone Oak ISD	41	60.3%	16	23.5%	68
	Quinlan ISD	54	38.0%	22	15.5%	142
	Wolfe City ISD	24	54.5%	10	22.7%	44
	Total Hunt County	310	51.4%	122	20.2%	603
Red River	Avery ISD					
	Clarksville ISD	12	23.1%	8	15.4%	52
	Detroit ISD	26	56.5%	17	37.0%	46
	Rivercrest ISD	30	71.4%	14	33.3%	42
	Total Red River County	68	48.6%	39	27.9%	140
Grand Total Service Area		865	50.0%	424	24.5%	1,730

PJC Transfers to Universities
Fall Semesters Cohorts of first time students

Universities Attended in Texas	2005	2006	2007	2008	2009
Abilene Christian	-	1	-	-	-
Angelo State University	1	1	-	-	-
Austin College	2	-	-	-	-
Baylor University	1	3	-	1	-
Dallas Baptist	2	-	-	-	2
DeVry - Irving	-	-	2	-	1
East Texas Baptist	-	-	-	1	-
Hardin Simmons	-	1	-	-	1
Jarvis Christian College	-	-	-	-	1
LeTourneau University	-	-	-	-	3
Midland College	-	-	-	1	-
Midwestern State University	4	1	-	-	-
South Texas	-	-	-	-	1
Sam Houston State University	3	1	-	-	-
Stephen F. Austin University	4	-	1	2	2
Sul Ross St University	-	-	1	-	-
Southern Methodist U	-	-	-	1	1
Southwest Assemblies of God	1	1	-	-	-
Tarleton State University	3	-	-	-	3
Trinity University	1	-	-	-	-
Texas A&M - Commerce	119	56	27	28	40
Texas A&M - Corpus Christi	-	-	1	-	-
Texas A&M University	4	7	1	-	-
Texas A&M - Texarkana	-	-	-	-	-
Texas State University - San Marcos	2	4	-	-	2
Texas Tech University	-	2	-	-	8
UNT Fort Worth - Osteopathic	-	1	0	-	-

PJC Transfers to Universities
Fall Semesters Cohorts of first time students

Universities Attended in Texas	2005	2006	2007	2008	2009
University of Houston	1	1	-	-	-
University of Incarnite World	-	-	-	-	-
University of North Texas	8	8	1	1	5
University of Texas Pan American	-	-	-	-	1
University of Texas - Arlington	5	3	-	-	3
University of Texas - Dallas	1	1	1	-	1
University of Texas - San Antonio	-	1	1	-	-
University of Texas - Tyler	3	5	1	-	6
Wayland Baptist	-	-	-	-	-

HEALTH SCIENCE INSTITUTIONS

Texas A&M College of Veterinary Med	0	-	-	-	-
Texas Tech Health Sciences Center	0	2	1	-	-
University of Texas - Galveston	0	-	-	-	-
University of Texas - Dallas	0	-	-	-	-
University of Texas - San Antonio	0	-	-	-	1

PJC Transfers to Universities
Fall Semesters Cohorts of first time students

Universities Attended out of Texas	2006	2007	2008	2009
Alabama - Troy University - Fort Ben	-	-	-	-
Alabama - Talladega Coll	-	-	-	1
Alabama - University of Alabama	1	-	-	-
Alabama - University of Northern Alabama	-	-	-	-
Alaska - U of Alaska Anchorage	-	-	-	-
Arizona - University of Phoenix	4	3	1	1
Arkansas - Arkansas State	1	-	-	-
Arkansas - Henderson State	-	-	-	1
Arkansas - John Brown University	1	-	-	-
Arkansas - Ouachita Baptist	-	-	-	-
Arkansas - Southern Arkansas University	-	-	-	1
Arkansas - University of Arkansas at Monticello	-	1	-	-
Arkansas - University of Arkansas	-	-	-	1
California - Ashford University	-	-	1	2
California - CSU Sacramento	-	1	-	-
Colorado - Mesa State	-	-	-	-
Connecticut - Southern Connecticut State	-	-	-	-
Florida - Broward College	-	-	-	1
Idaho - NW Nazarene	-	-	1	-
Iowa - University of Iowa	-	-	-	1
Illinois - Devry at Dupage	-	-	-	1
Kansas - Friends University	-	-	-	2
kansas - Pitt State University	-	-	-	1
Kentucky - U of Cumberland	-	-	1	-
Louisiana - Louisiana Tech	-	-	-	-
Louisiana - Southeast	-	-	-	-
Louisiana - Northwestern State	2	-	-	-
Massachusetts - M I T	-	-	-	1
Maryland- University of Md. U	1	-	2	-
Michigan - Northwood -Chicago	-	-	-	1

PJC Transfers to Universities
Fall Semesters Cohorts of first time students

Universities Attended out of Texas	2006	2007	2008	2009
Missouri -Columbia College - EV	-	-	-	-
Missouri - Harris Stowe	-	-	-	-
Missouri - Lindenwood Seminary	-	-	-	-
Missouri - NW Missouri State	-	-	-	-
Missouri - Park University	1	-	-	-
Missouri - University of Central Missouri	-	-	-	-
Mississippi - Mississippi Valley U.	-	-	-	-
Montana - University of Montana	-	-	-	-
Nevada - U. Nevada Reno	-	-	-	1
New Mexico - University of New Mexico	-	-	-	-
New York - CUNY - John Jay	1	-	-	-
New York - New York University - Rockland	-	-	-	-
New York - St. Joes Brookland	-	-	-	-
North Carolina - Campbell University	-	-	-	-
Oklahoma - Baptist University	-	-	-	1
Oklahoma - Oklahoma City University	-	-	2	1
Oklahoma - East Central Oklahoma	-	-	-	1
Oklahoma -University of Oklahoma	-	-	-	1
Oklahoma - OSU at Okmulgee	-	1	-	-
Oklahoma - Southeastern State	-	-	2	4
Oklahoma - SO Nazarene University	-	-	-	-
Oklahoma - Southwestern State	-	-	-	-
Ohio - Tiffin University	-	-	-	1
Ohio - Ohio State University	1	-	-	-
Rhode Island - Providence University	-	-	-	1
Tennessee - Middle Tennessee University	-	-	-	-
Virginia VA Union	-	-	1	1
Wisconsin - Alverno	-	-	-	-
ON LINE COLLEGES	-	-	1	-

**PJC Transfers to Community Colleges
Fall Semesters Cohorts of first time students**

College attended in Texas	2006	2007	2008	2009
Austin Community Col District	3	-	-	-
Amarillo College	-	-	-	1
Blinn College	4	2	-	3
Central Texas - Traditional	-	-	-	2
Cisco Junior College	3	-	-	2
Clarendon College	1	-	1	-
Collin County Community College	15	5	5	5
DCCCD - Brookhaven College	2	-	1	-
DCCCD - Cedar Valley College	2	-	1	-
DCCCD - Eastfield College	4	3	2	-
DCCCD - El Centro College	1	-	-	-
DCCCD - Mountain View College	1	-	-	-
DCCCD - North Lake College	-	1	-	-
DCCCD - Richland College	5	-	-	-
Grayson College	5	-	1	8
Hill College	1	-	1	-
ITT Richardson	-	1	-	-
Kilgore College	2	-	-	-
McLennan Community College	1	-	1	-
Lone Star Com.College	2	-	-	2
Navarro College	1	2	-	-
North Central Texas College	2	1	1	4
Odessa College	-	-	1	-
Paris Junior College (still enrolled NOW)	433	782	847	540
San Jacinto College	-	-	-	-
San Antonio Com. Col. District	1	-	-	-
South Plains CC	-	-	1	1
Tarrant County CC District	5	-	6	3
TSTC - Marshall	-	1	-	-

PJC Transfers to Community Colleges
Fall Semesters Cohorts of first time students

College attended in Texas	2006	2007	2008	2009
Texas CC	-	-	1	9
Tyler Junior College	9	3	5	14
Vernon	1	-	-	1
Weatherford College	2	-	-	-
Western Texas College	-	1	-	1

PJC Transfers to Community Colleges, continued
Fall Semesters Cohorts of first time students

Colleges attended outside Texas	2006	2007	2008	2009
Alabama -Alabama Southern CC	-	-	-	-
Arkansas - ASU at Mountain Home	-	-	-	-
Arkansas - Southern Arkansas CC	1	-	-	-
Arkansas - University of Arkansas CC	1	-	-	-
Arizona - Yavapai College	-	-	-	-
California - Bakersfield College	1	-	-	-
California - Diablo College	-	-	-	1
California - East Los Angeles	1	-	-	-
California - Glendale College	-	-	1	-
California - Porterville College	-	-	-	-
California - Skyline College	-	-	-	-
California - Los Angeles City	-	-	-	-
California -San Joaquine Del	-	-	-	1
California - West Hills CC	-	-	1	-
California - West Los Angeles CC	-	-	-	-
Colorado - Arapahoe CC	-	-	-	-
Colorado - Otero Junior C	1	-	-	-
Colorado - Pueblo Comm. Col	-	-	-	1
Florida - Pensacola Junior College	1	-	-	-
Illinois -Southwestern CC	-	-	-	-
Illinois - City of Chicago CC	-	-	-	1
Illinois - College of Lake County	-	-	-	1
Illinois- Triton College	-	-	-	-
Iowa - Indian Hills CC	1	-	-	-
Kansas - Barton CNTY CC	-	-	1	-
Kansas - Cowley	-	-	1	-
Kentucky - KCTCS	-	-	-	1
Louisiana - Bossier Parish	1	-	-	-
Louisiana -Delgado CC	-	-	-	1
Louisiana - South Louisiana CC	1	-	1	-
Maryland - Allengany	-	-	1	-
Minnesota - San Juan College	-	-	-	-
Mississippi - Meridian CC	-	-	-	-
Mississippi - Northeast Mississippi CC	-	-	-	1
Mississippi - Northwest Mississippi CC	1	-	-	-
Missouri - College of the Ozarks	-	-	-	1
Missouri - MetropolitanCC	-	-	-	-
New Jersey - Cumberland City CC	-	-	-	-
New Jersey - Burlington City	-	-	-	1
New York - Erie CC City	-	-	1	-
New York - SUNY Orangen CC	-	-	1	-
Nebraska - Metropolitan CC	-	-	-	-
Nebraska - Northeast CC	-	-	-	1

PJC Transfers to Community Colleges, continued
Fall Semesters Cohorts of first time students

Colleges attended outside Texas	2006	2007	2008	2009
North Carolina - Ashville Burno CC	-	-	-	1
North Carolina - Pitt CC	1	-	-	-
North Carolina - Guilford Tech	-	1	-	-
Ohio - Owens CC	-	-	-	2
Oklahoma - Carl Abert	-	-	-	1
Oklahoma - Seminole	-	-	1	-
Oklahoma - Murray State	-	-	-	1
Oklahoma - Oklahoma City CC	1	-	-	-
Oklahoma - Western Oklahoma State	-	-	1	1
Oklahoma - Ross State	1	-	-	-
Oregon - Portian CC	-	-	-	-
Tennessee - SW Tennessee CC	-	-	-	1
Wisconsin - NW Wisconsin CC	-	-	-	-
Wyoming - East Wyoming College	-	1	-	-

Graduates and Core Completers

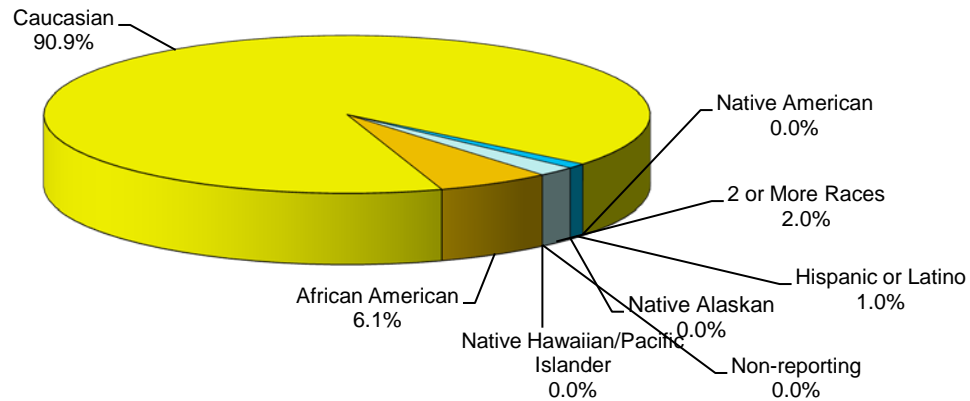
Graduates:	2000-01	2001-02	2002-03	2003-04	2004-05	2005-06	2006-07	2007-08	2008-09	2009-10
Associate Degree										
Academic										
Number	103	168	151	197	207	171	218	226	291	287
Percent	35.89%	53.50%	35.45%	28.51%	28.95%	36.00%	39.21%	40.43%	42.11%	41.53%
Technical										
Number	57	35	56	84	60	65	111	92	90	103
Percent	19.86%	11.15%	13.15%	12.16%	8.39%	13.68%	19.96%	16.46%	13.03%	13.03%
Certificates										
Number	127	111	219	203	204	239	227	241	310	320
Percent	44.25%	35.35%	51.41%	29.38%	28.53%	50.32%	40.83%	43.11%	44.86%	46.31%
Total	287	314	426	484	471	475	556	559	691	710
Core Completers	31	48	63	207	244	244	245	283	337	336

Employee Data

Faculty by Ethnicity Fall 2010

Ethnicity	Number	Percentage
African American	6	6.1%
Caucasian	90	90.9%
Native American	0	0.0%
Hispanic or Latino	1	1.0%
Native Alaskan	0	0.0%
2 or More Races	2	2.0%
Non-reporting	0	0.0%
Native Hawaiian/Pacific Islander	0	0.0%
Total*	99	100.0%

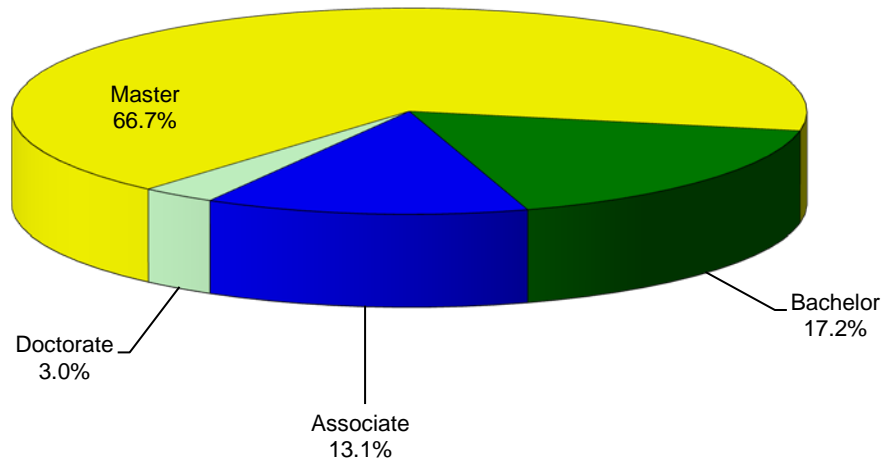
*Does not Include adjunct faculty.



Faculty by Highest Degree Earned Fall 2010

Degree	Number	Percentage
Doctorate	3	3.0%
Master	66	66.7%
Bachelor	17	17.2%
Associate	13	13.1%
Total*	99	100.0%

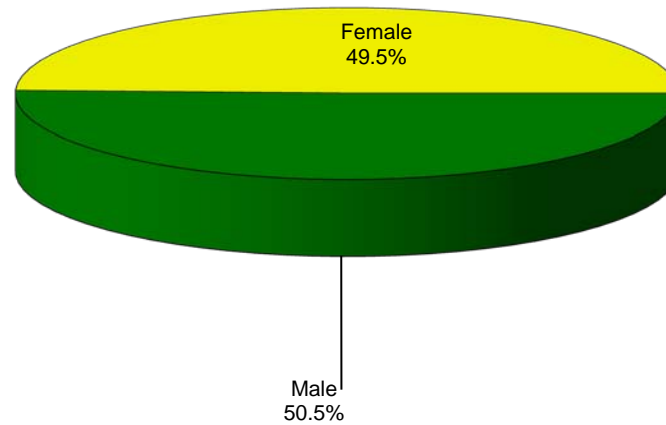
*Does not include adjunct faculty.



Faculty by Gender Fall 2010

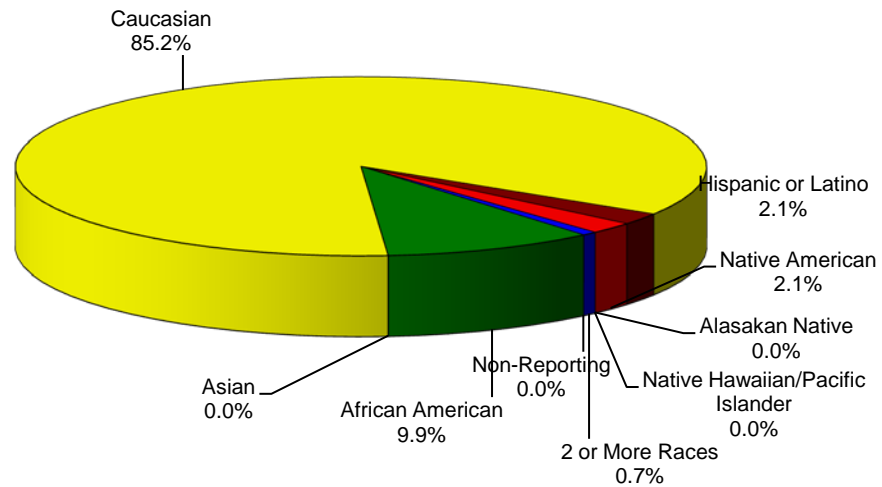
Gender	Number	Percentage
Male	50	50.5%
Female	49	49.5%
Total*	99	100.0%

*Does not include adjunct faculty.



Administrative, Professional, and Support Staff by Ethnicity Fall 2010

Ethnicity	Number	Percentage
African American	14	9.9%
Asian	0	0.0%
Caucasian	121	85.2%
Hispanic or Latino	3	2.1%
Native American	3	2.1%
Alaskan Native	0	0.0%
Native Hawaiian/Pacific Islander	0	0.0%
2 or More Races	1	0.7%
Non-Reporting		0.0%
Total	142	100.0%

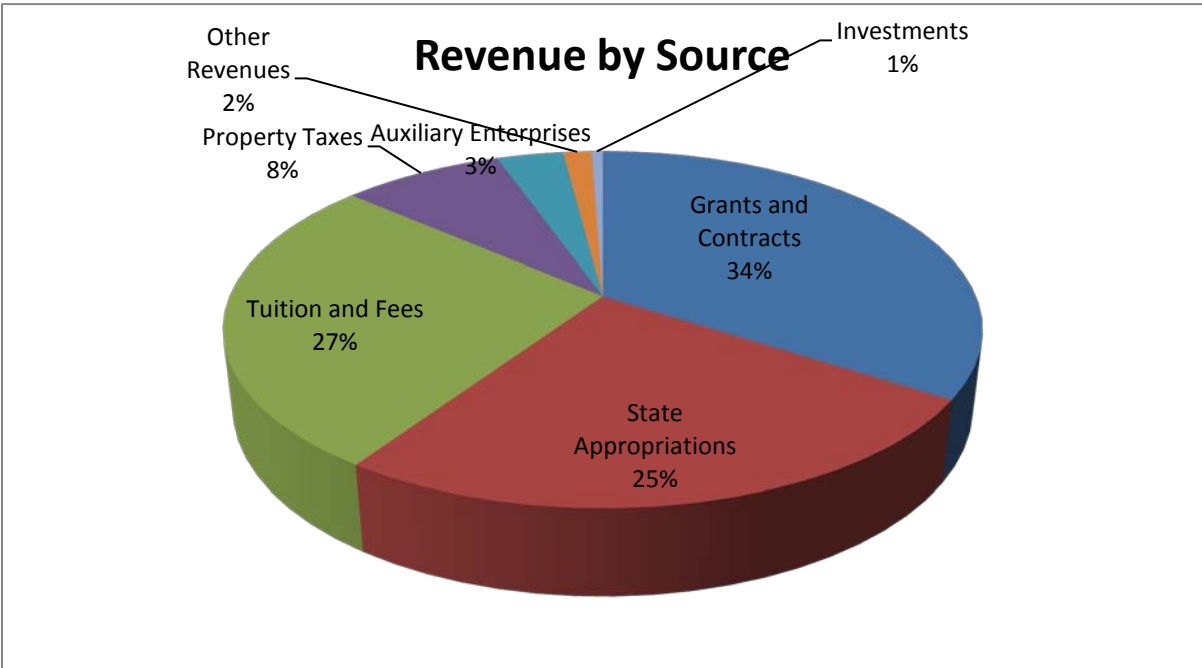


Financial Data

Budgeted Revenue by Source

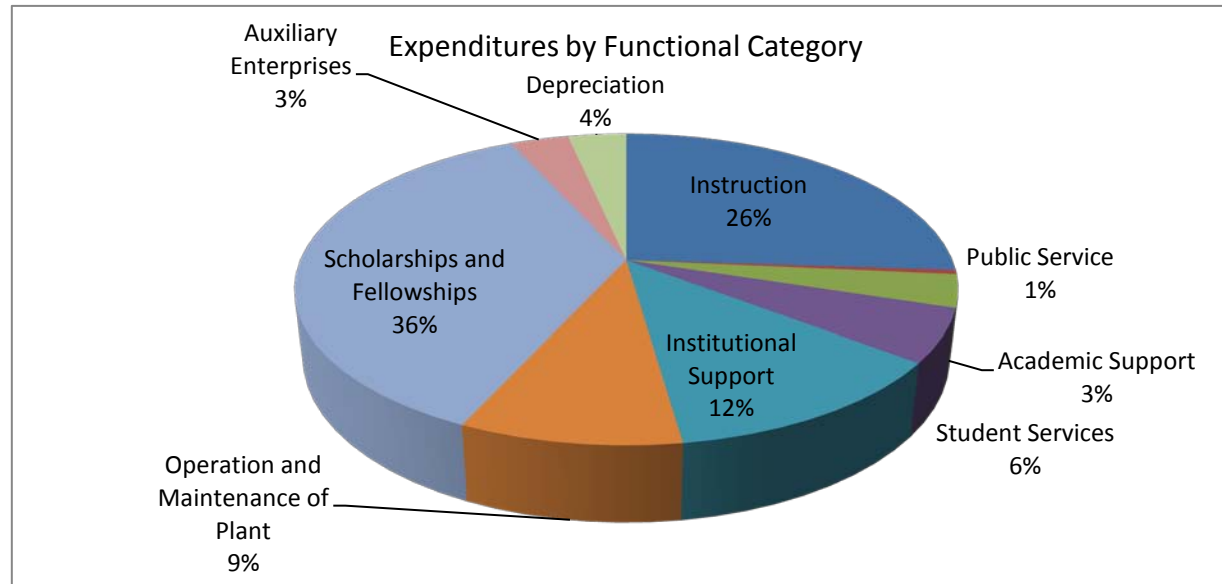
2010-11

Grants and Contracts	\$ 11,898,616
State Appropriations	8,828,787
Tuition and Fees	9,396,900
Property Taxes	2,860,000
Auxiliary Enterprises	1,182,377
Other Revenues	504,763
Investments	200,000
Total Revenues	\$ 34,871,443



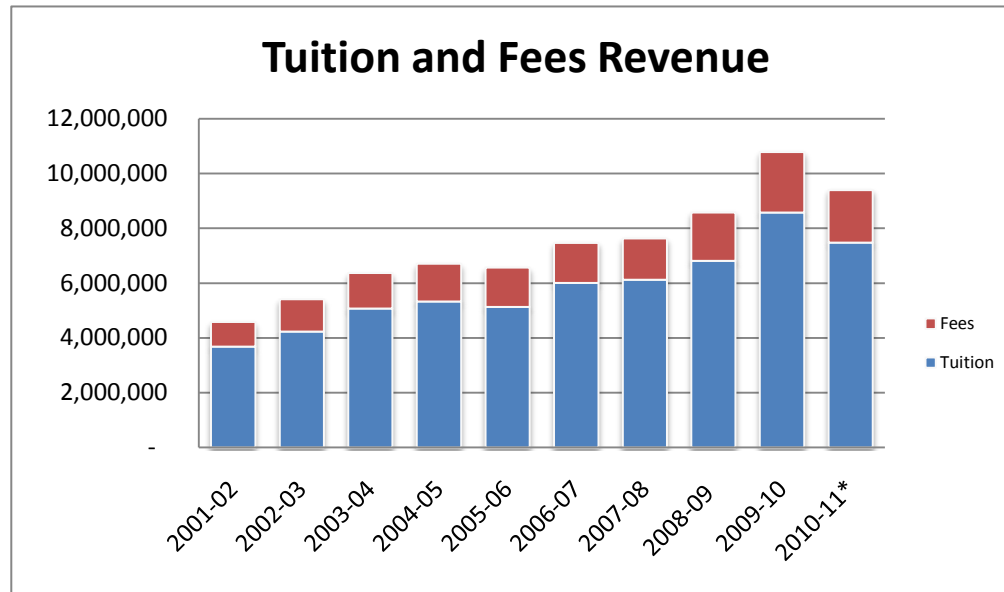
**Budgeted
Operating Expenditures by Functional Category
2010-11**

Instruction	\$ 9,080,351
Public Service	150,687
Academic Support	1,182,561
Student Services	1,924,910
Institutional Support	4,308,426
Operation and Maintenance of Plant	3,181,916
Scholarships and Fellowships	12,674,001
Auxiliary Enterprises	1,182,377
Depreciation	1,186,214
Total Operating Expenditures	\$ 34,871,443



Tuition and Fees Revenue

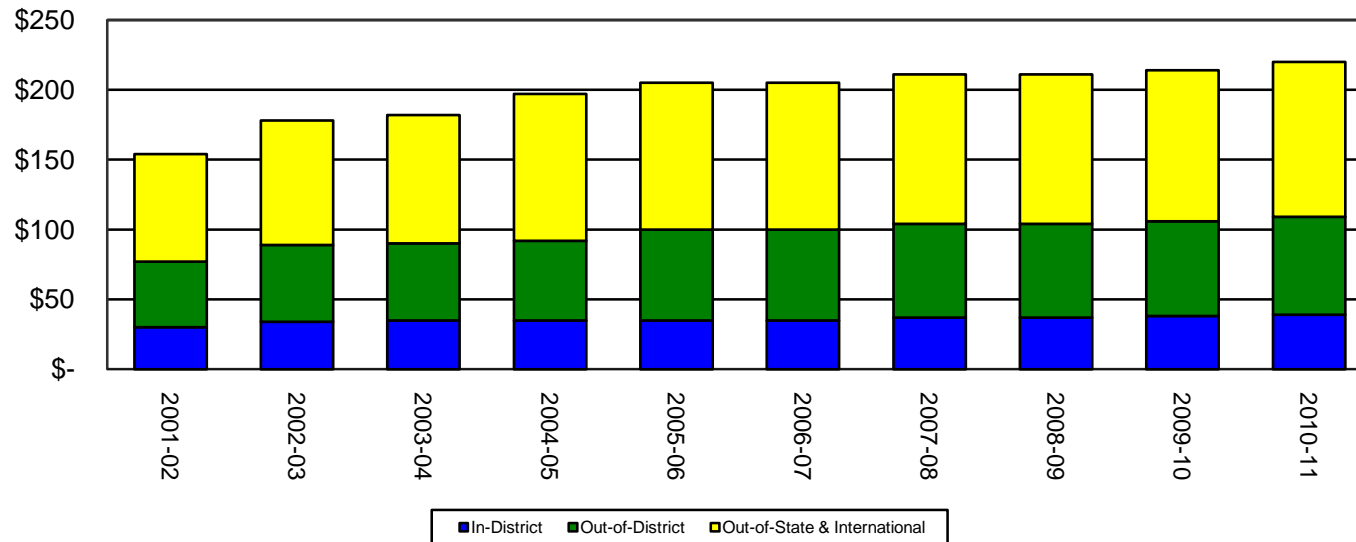
Fiscal Year	Tuition	Fees	Total
2001-02	3,681,405	902,222	4,583,627
2002-03	4,236,214	1,180,005	5,416,219
2003-04	5,072,934	1,298,612	6,371,546
2004-05	5,329,485	1,380,216	6,709,701
2005-06	5,135,563	1,432,300	6,567,863
2006-07	6,011,158	1,451,027	7,462,185
2007-08	6,127,357	1,498,389	7,625,746
2008-09	6,814,468	1,764,701	8,579,169
2009-10	8,578,378	2,199,622	10,778,000
Budgeted 2010-11*	7,477,000	1,919,900	9,396,900



Per Hour Tuition Costs

Fiscal Year	In-District	Out-of-District	Out-of-State & International
2001-02	30	47	77
2002-03	34	55	89
2003-04	35	55	92
2004-05	35	57	105
2005-06	35	65	105
2006-07	35	65	105
2007-08	37	67	107
2008-09	37	67	107
2009-10	38	68	108
2010-11	39	70	111

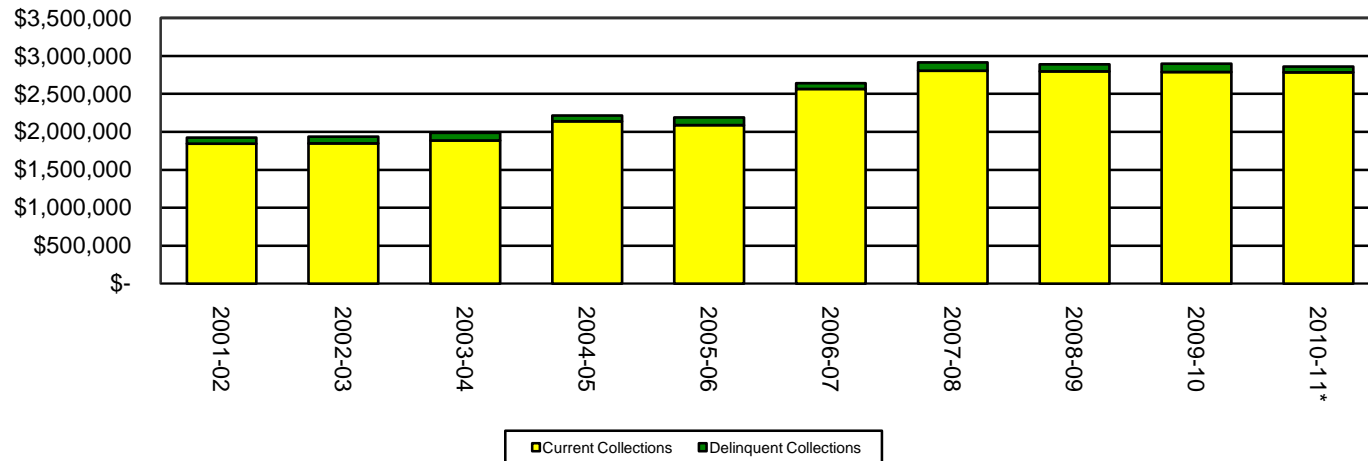
Tuition Cost per Contact Hour



Property Tax Collections

Fiscal Year	Current Tax Collections	Delinquent Collections	Total Tax Collections
2001-02	1,846,216	78,717	1,924,933
2002-03	1,848,582	87,703	1,936,285
2003-04	1,887,426	101,401	1,988,827
2004-05	2,140,310	74,223	2,214,533
2005-06	2,088,387	102,633	2,191,020
2006-07	2,565,594	74,092	2,639,686
2007-08	2,807,110	109,757	2,916,867
2008-09	2,795,187	94,335	2,889,522
2009-10	2,787,564	109,648	2,897,212
Budgeted 2010-11*	2,785,000	75,000	2,860,000

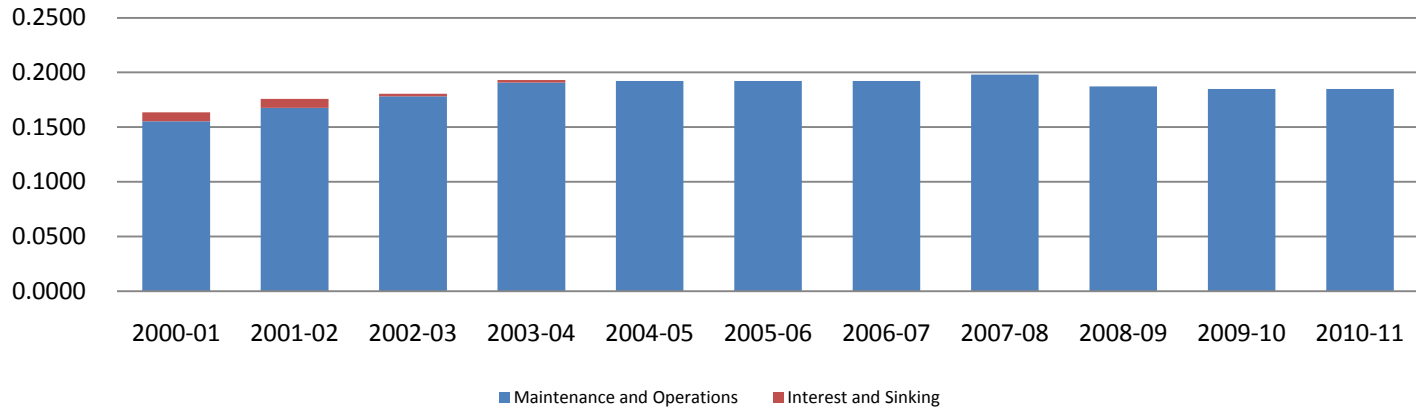
Property Tax Collections



Property Tax Rates Assessed

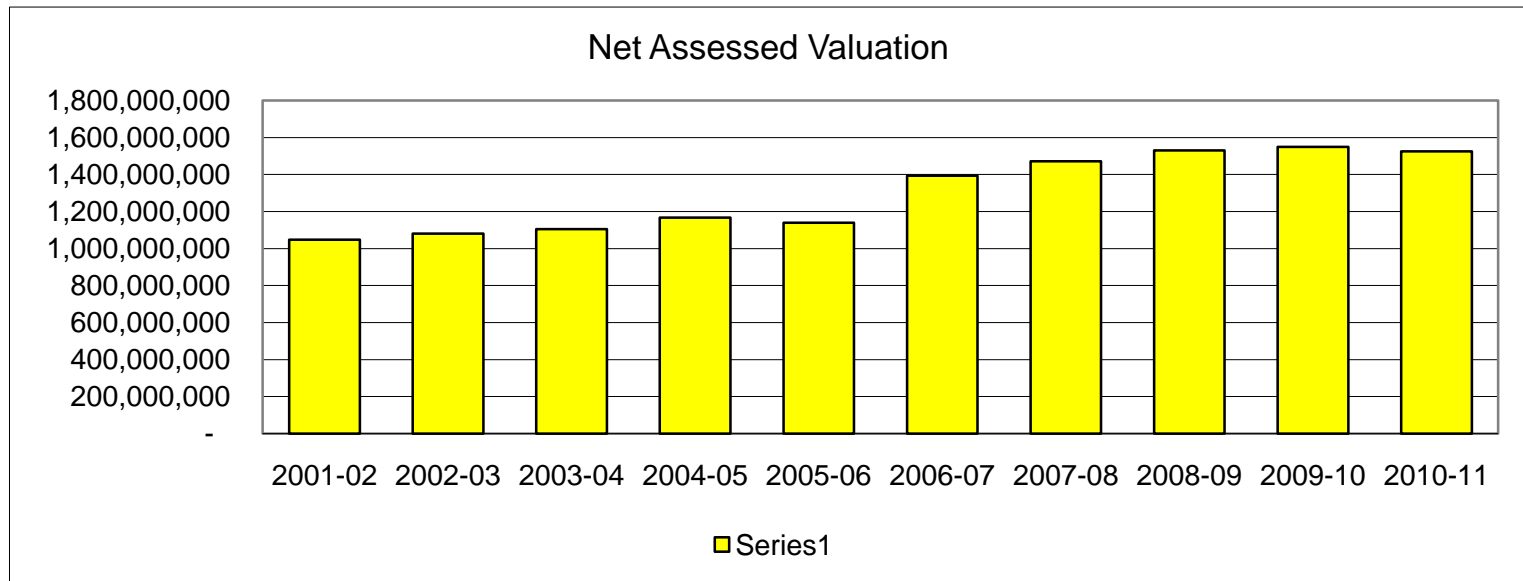
Fiscal Year	Maintenance and Operations	Interest and Sinking	Total
2000-01	0.1553	0.0084	0.1637
2001-02	0.1678	0.0080	0.1758
2002-03	0.1783	0.0021	0.1804
2003-04	0.1907	0.0025	0.1932
2004-05	0.1922	0.0000	0.1922
2005-06	0.1922	0.0000	0.1922
2006-07	0.1922	0.0000	0.1922
2007-08	0.1980	0.0000	0.1980
2008-09	0.1874	0.0000	0.1874
2009-10	0.1850	0.0000	0.1850
2010-11	0.1850	0.0000	0.1850

Property Tax Rates Assessed



Net Assessed Valuation

Fiscal Year	Assessed Valuation	Less: Exemptions	Net Assessed Valuation
2001-02	1,788,335,813	740,892,878	1,047,442,935
2002-03	1,754,194,347	673,704,983	1,080,489,364
2003-04	1,756,976,818	652,313,675	1,104,663,143
2004-05	1,751,027,250	584,388,140	1,166,639,110
2005-06	1,739,490,822	599,743,295	1,139,747,527
2006-07	1,781,936,182	387,720,052	1,394,216,130
2007-08	1,867,391,327	395,309,866	1,472,081,461
2008-09	2,008,299,818	478,863,243	1,529,436,575
2009-10	2,055,714,230	506,178,167	1,549,536,063
2010-11	2,065,438,985	540,197,794	1,525,241,191



Glossary of Terms

African American: A person having origins in any of the black racial groups of Africa (except those of Hispanic origin).

Asian: A person having origins in any of the original peoples of the Far East, Southeast Asia, the Indian Subcontinent, or Pacific Islands. This includes people from China, Japan, Korea, the Philippine Islands, American Samoa, India, and Vietnam.

Associate degree: An award that normally requires at least two but less than four years of full-time equivalent college work.

Bachelor's degree: An award (baccalaureate or equivalent degree, as determined by the Secretary of the U.S. Department of Education) that normally requires at least four years but not more than five years of full-time equivalent college-level work.

Caucasian: A person having origins in any of the original peoples of Europe, North Africa, or the Middle East (except those of Hispanic origin).

Contact hour: A unit of measure that represents an hour of scheduled instruction given to students. Also referred to as clock hour.

Credit hour: A unit of measure representing an hour (50 minutes) of instruction over a 15-week period in a semester or a 10-week period in a quarter system. It is applied toward the total number of hours needed for completing the requirements of a degree, diploma, certificate, or other formal award.

Degree: An award conferred by a college, university, or other postsecondary education institution as official recognition for the successful completion of a program of studies.

Doctoral degree: The highest award a student can earn for graduate study.

Dual credit: A program through which high school students may enroll in college courses while still enrolled in high school. Students are not required to apply for admission to the college in order to participate.

Ethnicity: Category used to describe groups to which individuals belong, identify with, or belong in the eyes of the community. A person may be counted in only one group.

First-time student: A student attending any institution for the first time at the level enrolled. Includes students enrolled in the fall term who attended a postsecondary institution for the first time at the same level in the prior summer term. Also includes students who entered with advanced standing (college credit earned before graduation from high school).

Full-time equivalent enrollment: A unit of measure utilized to determine the number of full-time equivalent students during a semester. It is calculated by dividing the sum of student credit hours (SCH) by 12 to obtain the full-time equivalents.

Full-time student: A student enrolled for 12 or more semester credits, 12 or more quarter credits, or 24 or more contact hours a week each term.

Hispanic: A person of Mexican, Puerto Rican, Cuban, Central or South American, or other Spanish culture or origin, regardless of race.

In-district: Those students who live in the Paris Junior College taxing district.

Master's degree: An award that requires the successful completion of a program of study of at least the full-time equivalent of one but not more than two academic years of work beyond the bachelor's degree.

Native American: A person having origins in any of the original peoples of North America and who maintains cultural identification through tribal affiliation or community recognition.

Glossary of Terms, continued

Online: A method of learning whereby some of the learning takes place via the Web or similar electronic means (such as Intranet).

Out-of-district: Those students who do not live in the Paris Junior College taxing district.

Out-of-state: Those students who do not meet the institution's or state's residency requirements.

Part-time student: A student enrolled for fewer than 12 credits per semester or quarter, or fewer than 24 contact hours a week each term.

Quarter: A calendar system in which the academic year consists of four sessions called quarters of about 12 weeks each. The range may be from 10 to 15 weeks. Typically used with continuing education courses.

Remedial services: Instructional courses designed for students deficient in the general competencies necessary for regular post-secondary curriculum and educational setting.

Semester: A calendar system that consists of two semesters during the academic year with about 16 weeks for each semester of instruction. There may be additional summer sessions.

Tuition: Amount of money charged to students for instructional services. Tuition may be charged per term, per cc

VCT: Virtual College of Texas is a collaborative of Texas' fifty community college districts and the Texas State Technical College System. Through VCT, students may register at their local colleges to take credit and non-credit distance learning courses from other colleges throughout Texas.